



MONASH College

International Student Course Guide 2012

This **promise**  
is at the heart  
of everything  
we do.





▶ We **promise** to  
give you the best  
chance of success.

## Contents

Global network	2
Why Monash University?	4
Monash College pathways	6
Foundation Year	8
Diplomas	14
■ Art & Design Studies	18
■ Arts	20
■ Business	22
■ Engineering Studies	24
English language	26
Care and support	28
Accommodation	29
Living in Melbourne	30
How to apply	31
Fees and application form	32
Intake calendars	33

**Monash College has been preparing students for university for more than 20 years and we are proud of our international reputation as leaders in transition education.**

**As a wholly owned company of Monash University, the College specialises in academic and English pathway programs for students who aspire to study at Monash or another leading Australian university.**

We offer more than an academic program.

Our students make real connections between their study and career ambitions.

They 'learn how to learn' for success at university and beyond, and enjoy the security and support of the Monash College community.

**Jo Mithen,**  
Monash College CEO



# We **promise** to offer you a complete package of transition programs in Australia and close to home.

**At Monash College, our programs focus on developing key skills, knowledge and ways of thinking that will equip you, not only to enter into your degree of choice, but also into your career of choice.**

## **Foundation Year**

The Monash University Foundation Year prepares students for entry to first year of all 10 faculties of Monash University and is accepted by all Australian universities.

The curriculum has been specifically designed with Monash University academic staff to prepare international students for higher education in Australia.

The Foundation Year is offered in Melbourne, at the Monash College City campus, and through the College's global network in Indonesia, Malaysia and Sri Lanka.

## **Diplomas**

Monash College Diplomas provide specialised preparation for direct entry to first or second year of specific Monash University professional degrees.

Monash College offers four diplomas:

- **Diploma of Art & Design Studies**
- **Diploma of Arts**
- **Diploma of Business**
- **Diploma of Engineering Studies**

In addition to Melbourne Australia, Diplomas are also offered in Indonesia, Singapore and Sri Lanka.

## **English language programs**

The Monash University English Language Centre specialises in delivering English language courses which support students in achieving their academic and career aspirations. Our courses are developed in consultation with the University and focus on the skills required for successful study, at both undergraduate and postgraduate levels, and in preparation for international language tests.

## **Professional internships**

Through its division Professional Pathways Australia, Monash College is the largest provider of internship/professional year placements for international students in Australia. In this way, the College provides the crucial linkage between education and professional experience and the best preparation for graduate employment.



### A global network

Monash College programs are available throughout Asia Pacific via our global partner network. If you are looking for a quality education, with a direct pathway to Monash or another Australian university without travelling too far from home, we highly recommend you consider one of our partner institutions.

Sri Lanka  
Singapore  
Indonesia  
Malaysia

Australia

Melbourne  
campuses:  
Caulfield, Clayton,  
Melbourne City



# Why **Monash** University?

Monash is in the top 1% of world universities and is ranked at 60 by the QS World University Rankings 2011.

## Monash University understands ambition.

Established in 1958, Monash University has earned an international reputation for research and teaching excellence.

In the past 10 years we have built on our ambitions to become the largest university in Australia and have extended our reach across the globe. We have an international network of more than 275,000 alumni across the world and have built campuses and centres in Malaysia, India and South Africa. We are the only Australian university active on four continents.

It says something about our ambition, that for a relatively young institution, Monash University ranks above world standards in almost all disciplines.

## The world's top CEOs are more likely to hire Monash Graduates

*(New York Times, October 2011)*

In a recent study published in *The New York Times*, more than 200 CEOs from the world's most successful companies rated Monash in the top 50 of world universities from which to hire graduates. Monash University ranked number one in Australia and number two in the Asia Pacific. It is proof that a Monash education prepares graduates ready to lead and perform at an international level.

## GROUP OF EIGHT

Monash University is a member of the Group of Eight, an alliance of leading Australian universities recognised for their excellence in teaching and research. Group of Eight universities produce graduates who find full-time employment sooner, begin on higher salaries, and are more likely to move onto postgraduate studies than graduates from other Australian universities.

## M8 Alliance

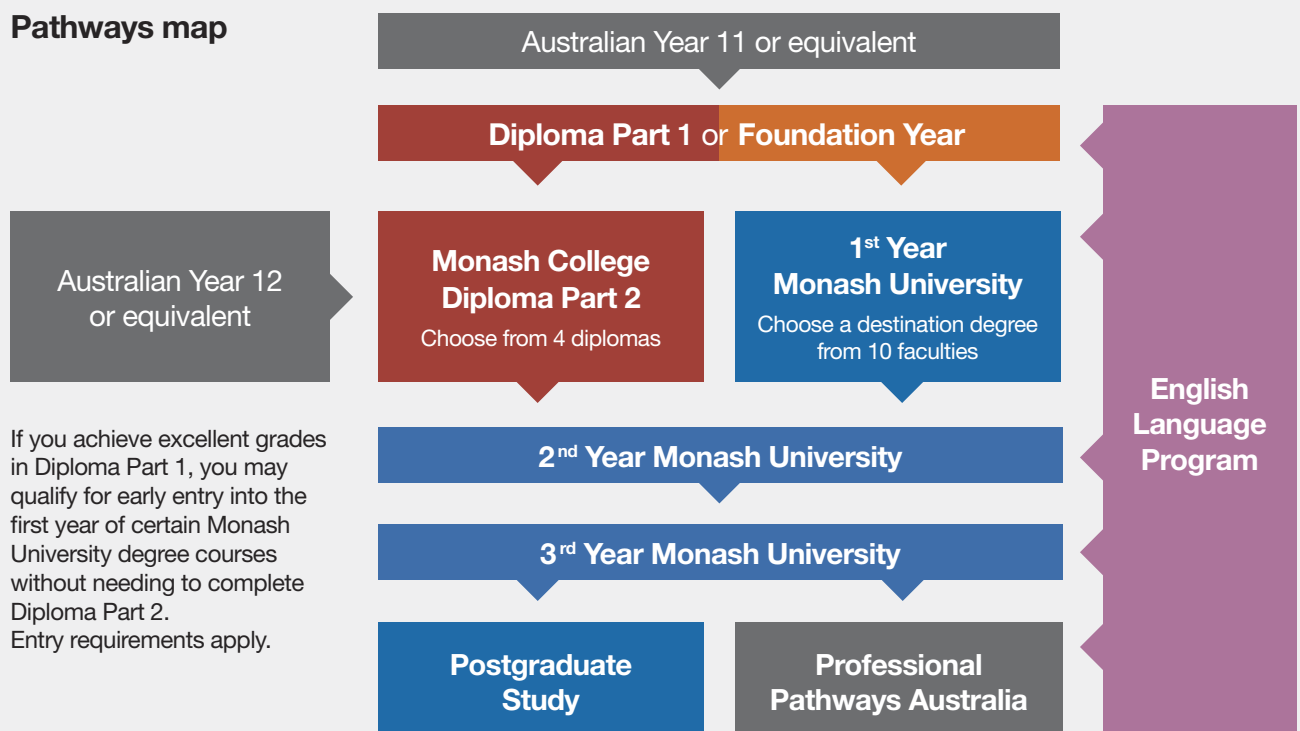
Alliance of Academic Health Centres and Medical Universities

Monash University is the only Australian member of the prestigious M8 Alliance of Academic Health Centres and Medical Universities. This global grouping includes Johns Hopkins University, the Sorbonne in Paris, Imperial College London and the Charité in Berlin.

# We **promise** to prepare you for entry to Monash

Monash College has a number of different ways to prepare you for entry into a Monash University degree course. Which program you choose depends on your current academic and English qualifications, and your career ambitions.

## Pathways map



## Monash College offers three pathway options

The Foundation Year	Diploma programs	English language programs
<p>is ideal for students who:</p> <ul style="list-style-type: none"> <li>want a guaranteed* pathway into first year of a Monash undergraduate degree in all 10 faculties, including Medicine, Health, Law, Pharmacy and Science.</li> <li>want to keep their discipline options open.</li> <li>want a pathway that is recognised for entry by all Australian universities and many internationally.</li> </ul>	<p>are ideal for students who:</p> <ul style="list-style-type: none"> <li>want a guaranteed* pathway into a Monash University degree in arts, design, architecture, business or engineering.</li> <li>want a course tailored to help them succeed in their chosen degree.</li> <li>narrowly missed the entry requirements for direct entry into a Monash University degree.</li> </ul>	<p>are ideal for students who:</p> <ul style="list-style-type: none"> <li>intend to study at Monash College or Monash University but need to improve their English.</li> <li>would like to improve their study skills for tertiary study in Australia.</li> <li>have received a conditional offer to Monash College or Monash University, dependent on the successful completion of an English language course.</li> </ul>

## How do they compare?


	Foundation Year	Diploma Part 1	Diploma Part 2	English programs
Location	Australia Indonesia Malaysia Sri Lanka	Australia Indonesia Singapore	Australia Indonesia Sri Lanka Singapore	Australia Indonesia Malaysia
Discipline <sup>#</sup>	General university preparation	Art and Design Arts Business Engineering	Art and Design Arts Business Engineering	English General study skills
Acceptance at Monash University	Accepted for entry into first year of all Monash University degrees offered to international students, subject to achieving minimum grades.	Accepted for entry into first year of selected Monash University degrees subject to achieving grades set by the faculty (from 75% to 80%)	Accepted for entry into second year of selected Monash University degrees subject to achieving grades set by the faculty (from 50% to 80%)	English Language Bridging Programs are available for students with conditional offers to Monash College or Monash University.
Recognised by other universities	Recognised by all Australian universities and more than 40 international universities across, North America, Asia, Europe and United Kingdom	No	Recognised by some Australian universities	Recognised by a number of Australian universities
Academic requirements	Australian Year 11 or equivalent	Australian Year 11 or equivalent	Australian Year 12, Foundation Year, Diploma Part 1 or equivalent	
English requirement	Depends on chosen format. Minimum entry IELTS 5.0 (no band less than 5.0)	Depends on chosen diploma. Minimum entry IELTS 5.5 (no band lower than 5.0)	IELTS 6.0 (writing 6.0)	Courses are available for all levels of English ranging from an IELTS score of 4.5-6.5
Age requirement	16 years	16 years	17 years	Various

\*Entry requirements into Monash University apply. Visit [www.monashcollege.edu.au](http://www.monashcollege.edu.au)

<sup>#</sup>Not all disciplines are available at all locations.

**Monash University**  
**Foundation Year**

# The Foundation Year



Monash College has helped me to make my future better. By studying the Foundation Year, I am always learning something new and still having lots of fun. Thanks to the Foundation Year, I am preparing for a successful future.

**Vonny Leonardy,**  
Monash University Foundation Year

The Foundation Year is a one year program designed to allow students to study a combination of subjects across all disciplines. This choice prepares them for entry into any faculty at university. Our curriculum is developed in conjunction with Monash University academics and with leading research into best practice in teaching and learning.

Foundation Year teachers work closely with students in and outside class time, to assist them with new ways of learning in preparation for university. We take a very individual approach to monitor and support academic progress to enable our students to achieve their best.

With 24/7 access to teaching materials, resources, practice tests online and a technology-rich learning environment, our students are ready for learning and work in the 21st century.

Collaborative learning environments and the development of independent learning skills help to prepare Foundation Year students for their tertiary studies.

Anne Bright,  
Director of the Monash University Foundation Year

## Benefits of the Foundation Year

### 1. Guaranteed entry

Students are guaranteed entry to the first year of a Monash University undergraduate degree upon successful completion and meeting the University entrance requirements. Foundation Year also meets the minimum entry requirement for all other Australian universities.

### 2. Generalist course

The Foundation Year is a generalist course providing students with a broad knowledge base across subject areas.

### 3. 200+ destination degrees

Upon successful completion, students are eligible to apply for entry to all Monash University undergraduate programs which are open to international students.

Study areas include:

- Art Design and Architecture
- Arts
- Business and Economics
- Education
- Engineering
- Information Technology
- Law
- Medicine, Nursing and Health Sciences
- Pharmacy and Pharmaceutical Science
- Science

### 4. Study at the Monash College City campus

Foundation Year is offered at the Monash College City campus in the centre of Melbourne. Specially designed to support Foundation Year curriculum, the City campus is a learning space with a fully wireless network and online learning management system.

### 5. Experience life in Melbourne

From the very start, be part of the Australian urban scene with access to many facilities, accommodation options, restaurants and social spaces within the city of Melbourne.

### 6. Your study options are flexible

The Foundation Year is offered in three formats to match your academic grades and study preferences: Standard (twelve months), Intensive (nine months) and Extended (fifteen months).

### 7. Four intakes each year

With intakes in January, March, July and September, there is an intake to suit your study needs.

Foundation Year graduates are accepted by all Australian universities and by more than 40 universities throughout North America, Europe, Asia and the United Kingdom.

# Monash University Foundation Year

## Entry requirements

Entry into the Foundation Year program is determined by age, academic and English language entry requirements. These requirements will be the main factors in deciding whether you enter the Standard, Intensive or Extended format of the program.

### Minimum age

You must be 16 years of age or older when you enrol. If you do not meet the age requirements, you may be offered a deferred place.

### Academic requirements

Successful Foundation Year applicants will have a qualification equivalent to Australian Year 11. Refer to the table on the next page.

### English language requirements

Students must have satisfactory English language skills. You will satisfy the English language requirements if you have completed an Australian Year 11 or equivalent in which the program was taught in English, and achieved satisfactory grades in English.

Alternatively you must meet one of the following requirements:

- **Standard:** IELTS score of 5.5 (with writing not less than 5.5), TOEFL Paper 527 TWE 4.5, TOEFL iBT 71 Writing 18.
- **Intensive:** IELTS score of 6.0 (no band less than 5.5), TOEFL Paper 550 TWE 4.5, TOEFL iBT 79 (No section lower than 18)
- **Extended:** IELTS of 5.0 (no band less than 5.0), TOEFL Paper 500 TWE 4.0, TOEFL iBT 61 Writing 71

## Course structure

### Program structure

Students must pass a minimum of eight units to successfully complete the Foundation Year consisting of:

- Unit 1 and 2 of English AND
- Unit 1 and 2 of at least two other subjects AND
- two additional units.

Standard program students study 10 units over the two semesters. The additional two units, if passed, give students an extra 5% bonus to their final Foundation Year score.

### Alternative formats

Everyone learns at a different level and speed. To enable students the best flexibility, the Foundation Year is offered in two alternative formats.

#### Intensive option

Perfect for students looking to fast-track their studies. You will complete your first semester over just eight weeks before joining the main program in Semester 2. In addition to your compulsory English units, you will choose two elective units in Semester 1 and four elective units in Semester 2. Intensive Semester 1 electives are limited to Mathematics, Accounting and Chemistry to enable in depth study during the shorter semester.

#### Extended option

This format includes an additional semester designed to build on students' English language and academic skills and is ideal for students looking for extra support.

After completing first semester, you will join the main Foundation Year group for your remaining two semesters. In addition to your two compulsory English units, you will choose three elective units per semester – graduating with a total of eight units.

## What electives can I study?

- Music
- Fundamental Mathematics
- Accounting
- Biology
- Chemistry
- Information Communications and Technology
- Economics
- Geography
- Mathematics
- Advanced Mathematics
- Physics
- Globalisation

For unit descriptions visit:  
[www.monashcollege.edu.au/foundationyear](http://www.monashcollege.edu.au/foundationyear)

If you narrowly missed the English language requirement, don't worry – Monash College offers pre-Foundation Year English preparation courses. Our admissions team will advise you on the best option to suit your needs.

**Monash University**  
**Foundation Year**  
**Academic entry requirements**

		Academic entry requirements Year 11 equivalent		
Country	Qualification	Intensive	Standard	Extended
Australia	Year 11	65	60	55
Bahrain	Secondary School General Certificate	75	70	65
Bangladesh	Year 11 – Higher Secondary School Certificate	3.3	3.0	2.7
Brunei	O Levels	20	23	24
Cambodia	Upper Secondary Diploma in Education	A	B	C
China	Gao ER Senior Middle Year 2	75	70	65
Hong Kong	HKCEE	Best 5 passes with a minimum score of 2 D's and 2 C's	Best 5 passes with a minimum score of 4 D's	Best 5 passes with a minimum score of 2 D's
	HKDSE (Senior Secondary 2) 40% pass rate 50% pass rate	Best 4 academic subjects 60% 65%	Best 4 academic subjects 55% 60%	Best 4 academic subjects 50% 55%
India	All India Senior School Certificate	65	60	55
Indonesia	SMA2	7.0	6.5	6.0
Iran	Pre University Certificate	14	12	11
Japan	Year 2 Upper Secondary School Certificate	3.3	2.5	2.0
Kenya	Kenya Certificate of Secondary Education Year 11	Average of best 7 subjects (7 points)	Average of best 7 subjects (6 points)	Average of best 7 subjects (5 points)
Kuwait	General Secondary School Certificate	75	70	65
Macau	Form 5 – Senior Middle Year 2	65	60	55
Malaysia	SPM	19 points	15 points	12 points
	UEC	23 points	25 points	27 points
Mauritius	O Levels	20 points	23 points	24 points
Oman	Secondary School Leaving Certificate	75	70	65
Pakistan	Intermediate Certificate or Higher Secondary School Certificate	65	60	55
Qatar	General Secondary Education Certificate	75	70	65
Saudi Arabia	General Secondary Education Certificate	75	70	65
Singapore	GCE O Levels	20	23	24
Sri Lanka	Sri Lanka O Levels	17	15	12
South Korea	Year 11 – High School Diploma	75	70	65
Taiwan	Senior High School Senior 2	75	70	65
Thailand	Matayom 5	3.0	2.7	2.5
Turkey	State High School Diploma	3.3	3.0	2.7
United Arab Emirates	General Secondary Education Certificate	75	70	65
Vietnam	Year 11	7.5	7.0	6.5

For a complete list of country specific information, visit [www.monashcollege.edu.au/foundationyear](http://www.monashcollege.edu.au/foundationyear).

Monash College has specific calculation methodologies which we apply in order to calculate the overall average or grade point average required.

# Monash University

## Foundation Year

### Destination degrees

Degree	Code	Campus	Intake	FY score	ES	Subject prerequisites and requirements
<b>Art Design &amp; Architecture</b>						
Architectural Design	3119	Caulfield	S1	305	E65	Any Foundation Year Maths
Design (Visual Communication)	2123	Caulfield	S1	255	E65	Art folio of 10-15 images of work
Fine Art	2119	Caulfield	S1	255	E65	Art folio of 10-15 images of work
Industrial Design	2122	Caulfield	S1	255	E65	Any Foundation Year Maths Art folio of 10-15 images
Interior Architecture	2126	Caulfield	S1	255	E65	Art folio of 10-15 images
<b>Arts</b>						
Arts	0002	Clayton	S1/2	290	E65	None
Arts	0002	Caulfield	S1/2	270	E65	None
Arts (Social Science)	3920	Malaysia	S1/2	255	E65	None
Arts (Global)	3910	Clayton	S1/2	290	E65	None. Study overseas for up to 3 semesters
Arts (Global)	3910	Caulfield	S1/2	290	E65	None. Study overseas for up to 3 semesters
Arts (Journalism)	2396	Gippsland	S1/2	255	E65	None. International work placements possible
Communication	2476	Malaysia	S1/2	255	E65	None
Journalism	4042	Caulfield	S1/2	290	E65	None
Professional Communication	1275	Berwick	S1/2	255	E65	None
<b>Business and Economics</b>						
Business	3806	Caulfield Berwick Peninsula	S1/2	290	E65	Fundamental Maths (65%) Maths (50%) or Advanced Maths (50%)
Business (Accounting)	0315	Caulfield	S1/2	290	E65	Fundamental Maths (65%) Maths (50%) or Advanced Maths (50%)
Business and Commerce	2224	Gippsland Malaysia	S1/2	255	E65	Year 11 equivalent Maths or any Foundation Year Maths (50%)
Business and Science	4415	South Africa	S1/2	255	E65	Year 11 equivalent Maths or any Foundation Year Maths (50%)
Commerce	0179	Clayton	S1/2	305	E65	Maths (65%) or Advanced Maths (65%)
Commerce (Accounting)	4410	Malaysia	S1/2	305	E65	Maths (65%) or Advanced Maths (65%)
Commerce (Accounting and Finance)	2015	Clayton	S1/2	305	E65	Maths (65%) or Advanced Maths (65%)
<b>Education</b>						
Arts/Education (Secondary) (4 years)	1641	Clayton	S1	305	E65	Year 11 equivalent Maths or any Foundation Year Maths (50%)
Early Childhood Education	1515	Peninsula	S1	270	E65	Year 11 equivalent Maths or any Foundation Year Maths (50%)
Primary Education	1514	Peninsula Gippsland	S1 S1	270 255	E65 E65	Year 11 equivalent Maths or any Foundation Year Maths (50%)
Sport and Outdoor Education	2069	Peninsula	S1	270	E65	Year 11 equivalent Maths or any Foundation Year Maths (50%)
Science/Education (Secondary) (4.25 years)	1633	Clayton	S1	305	E65	Year 11 equivalent Maths or any Foundation Year Maths (50%)

## Legend

Foundation Year – FY

English Score – ES

Intake Semester 1 or Semester 2 – S1/2

## How to calculate your Foundation Year score

Foundation Year scores are calculated out of a possible 400.

**Step 1:** Add the eight highest unit scores

**Step 2:** Divide the total by two

**Step 3:** Add extra unit bonus points (five per cent of each additional unit score (maximum of two units))


Degree	Code	Campus	Intake	FY score	ES	Subject prerequisites and requirements
<b>Engineering</b>						
Engineering	0032	Clayton	S1/2	305	E65	Maths (50%) or Advanced Maths (50%) and either Chemistry (50%) or Physics (50%)
Engineering	0032	Malaysia	S1/2	305	E65	Maths (50%) or Advanced Maths (50%) and either Chemistry (50%) or Physics (50%)
<b>Information Technology</b>						
Business Information Systems	3333	Clayton	S1/2	290	E65	Fundamental Maths (65%) Maths (50%) or Advanced Maths (50%)
Information Technology and Systems	3334	Caulfield	S1/2	270	E65	Year 11 equivalent Maths or any Foundation Year Maths (50%)
Information Technology and Systems	3334	Malaysia	S1/2	270	E65	Year 11 equivalent Maths or any Foundation Year Maths (50%)
<b>Law</b>						
Arts/Laws	0080	Clayton	S1/2	330	E70	None
Commerce/Laws	0546	Clayton	S1/2	330	E70	Maths (65%) or Advanced Maths (65%)
Law	2708	Clayton	S1/2	330	E70	None
<b>Medicine, Nursing &amp; Health Sciences</b>						
Biomedical Science	2230	Clayton	S1/2	320	E80	Chemistry (75%) and one of Maths (75%) Advanced Maths (75%) or Physics (75%)
Medicine/Surgery	0040	Clayton	S1	355	E80	Chemistry (80%) Indicative score only Interview and ISAT
Nursing	0727	Peninsula	S1	270	E70	Year 11 equivalent Maths or any Foundation Year Maths (50%) Application closing date late July
Occupational Therapy	3869	Peninsula	S1	290	E70	None. Application closing date in late July
Physiotherapy	3868	Peninsula	S1	320	E80	Any two of Chemistry (80%) Biology (80%) Maths (80%) Advanced Maths (80%) or Physics (80%) Interview and ISAT
Psychology (Honours)	3883	Clayton	S1	300	E70	None. To proceed to the fourth year, students must achieve the min entry requirement standard for Psychology based Honours programs
Radiography and Medical Imaging	1963	Clayton	S1	320	E80	Either Maths (75%) or Advanced Maths (75%) and Physics (75%) or Biology
<b>Pharmacy</b>						
Pharmaceutical Science	2894	Parkville	S1	305	E70	Chemistry (80%) and either Maths (80%) or Advanced Maths (80%)
Pharmacy	2628	Parkville	S1	320	E70	Chemistry (80%) and Maths (80%) or Advanced Maths (80%)
Pharmacy	2628	Malaysia	S1	320	E70	Chemistry (80%) and Maths (80%) or Advanced Maths (80%)
<b>Science</b>						
Environmental Science	2340	Clayton	S1	255	E65	None
Science	0050	Clayton	S1	255	E65	One of Biology, Chemistry, Maths, Advanced Maths, Physics or Geography
Biotechnology	3527	Clayton	S1	290	E65	Chemistry (75%) Maths (75%) or Advanced Maths (75%)

Scores and prerequisites listed are based on 2012 entry and should be used as a guide only.

For up to date information and a full list of destination degrees, please visit [www.monashcollege.edu.au/foundationyear](http://www.monashcollege.edu.au/foundationyear)

**Diplomas**

# Monash College Diplomas

A photograph of three women standing outdoors in front of a red building. The woman in the center is wearing a light blue jacket and a striped shirt, smiling broadly. The woman on the right is wearing a red jacket and smiling. The woman on the left is wearing a dark jacket and is seen from the back. The background shows a red wall and some greenery.

A Monash College Diploma provides an outstanding preparation for making the transition into first or second year university. It is the starting point for success in your career of choice.

**Dr Faye Lambert**  
Director, Monash College Diplomas

## A Monash College Diploma provides specialised preparation for direct entry into second year of specific Monash University degrees.

Monash College offers four Diplomas:

- **Art & Design Studies**
- **Arts**
- **Business**
- **Engineering Studies**

Each Diploma has been developed in consultation with Monash University faculties and academic staff to prepare students for success in their destination degrees.

The Diploma program consists of two parts – Part 1 and Part 2 – each of eight months duration. Each eight month period is divided into two trimesters<sup>#</sup>. You may enter the Diploma program at either Part 1 or Part 2, depending on your qualification and results.

## Two entry points:

### Diploma Part 1

Diploma Part 1 is designed for students entering with an Australian Year 11 or its equivalent. Unlike a general Year 12 qualification, our Diplomas let you specialise in the subjects that are most relevant to your chosen field and your destination degree. You develop strong skills in critical, analytical and creative thinking and a deep understanding of research techniques.

If you achieve excellent grades in Diploma Part 1, you may qualify for early entry into the first year of certain Monash University degree courses without needing to complete Diploma Part 2\*.

A Diploma certificate will not be issued unless students complete Diploma Part 2 successfully.

### Diploma Part 2

A Monash College Diploma Part 2 is based on first-year curriculum. The subjects build on the skills you've already developed in Part 1, and enhances the knowledge and confidence you need to succeed in a university degree.

By achieving the required grades in your diploma studies, you will be able to enter Monash University in the second year of your destination degree. Entry requirements vary for each degree and campus location.

## Benefits of a Monash College Diploma

### 1. Guaranteed entry

You are guaranteed entry\* into the second year of a specific Monash University undergraduate degree upon successful completion of Diploma Part 2 and meeting University entrance requirements.

### 2. Specialist course

The Diploma program is a specialist course for students who have decided on their chosen field of study. It provides preparation for specific Monash University degrees.

### 3. Move confidently into the University

Our Diploma programs are designed specifically to thoroughly prepare you, both academically and socially, to move confidently into University life. We understand that success in your chosen degree is of critical importance to you.

### 4. Study on the main Monash University campuses

The Monash College Diplomas are offered on the Monash University Clayton and Caulfield campuses. Become part of Monash University immediately, with access to the study areas, cafes, recreational facilities and special interest groups that make university life so special.

### 5. Teachers with industry experience

Our academic staff understand both the demands of tertiary learning and the workplace. With both teaching and industry experience, they are ideally placed to engage you in learning that is related to what happens in 'real life'.

### 6. Become an independent learner

We understand that successful transition into University and the workplace requires much more than simply learning by rote. Our programs focus on the development of skills that encourage independence in your thinking and the ability to take responsibility for your own learning.

### 7. Three intakes each year

There are three intakes throughout the year for maximum flexibility – February, June and October.

### 8. Multiple pathway options

A Monash College Diploma provides you with a number of flexible pathway options.

- Enter first year at Monash University
- Enter second year at Monash University
- Enter another Victorian university – the Monash College Diploma is also accepted for credit by some other Victorian universities.

<sup>#</sup>Except Engineering Studies Part 2 which is 12 months.

\*Entry requirements into Monash University apply. Visit [www.monashcollege.edu.au/diplomas](http://www.monashcollege.edu.au/diplomas)

# Diploma entry requirements

## Diploma prerequisites

The following entry requirements apply to all Monash College Diploma courses.

### Minimum age

When you enrol, you must be at least 16 years old for Part 1 or 17 years for Part 2. If you do not meet the age requirement, you may be offered a deferred place.

### Academic requirements

You will enter the Diploma at Part 1 or Part 2 depending on your entry scores. The decision will be based on your

highest education qualification and your previous academic results. To gain entry into a Diploma Part 1, you'll need an Australian Year 11 qualification or equivalent. For Part 2, you'll need an Australian Year 12 or equivalent.

### English language requirements

Students satisfy the English language requirements if they have undertaken Australian Year 11, Australian Year 12 or an equivalent program in which the whole program was taught in English and an English subject was satisfactorily completed.

### Diploma Part 1

- IELTS score of 5.5 (with no band less than 5.0) for Diploma of Art & Design Studies, Diploma of Business and Diploma of Engineering Studies.
- IELTS score of 6.0 (with writing 6.0) for Diploma of Arts.

### Diploma Part 2

- IELTS score of 6.0 (with writing 6.0).

For more information about entry requirements please visit [www.monashcollege.edu.au/diplomas](http://www.monashcollege.edu.au/diplomas)

## Diploma Part 1

## Diploma Part 2

Country	Academic entry requirements Year 11 equivalent	Academic entry requirements Year 12 equivalent				
	Qualification and score required	Qualification	A&D	Arts	Bus	Eng
Australia	Foundation Year = 240 Year 11 = 60	Foundation Year ATAR	255 50	255 65 (HB Stream) 70 (Psych Stream)	255 70	255 70
Bahrain	Tawjahiya (Secondary School Leaving Certificate) = 70	Not applicable for direct entry into MC Diploma Part 2				
Bangladesh	Higher Secondary Certificate = 3.0	Higher Secondary Certificate	3.0	3.0 (HB Stream) 3.7 (Psych Stream)	3.7	3.7
Brunei	GCE O Levels = 23	A Levels	5	5 (HB Stream) 6 (Psych stream)	6	6
Cambodia	Upper Secondary Diploma in Education = B	Not applicable for direct entry into MC Diploma Part 2				
China	Gao Er = 70	Goa San Senior Middle 3	75	75 (HB Stream) 80 (Psych Stream)	80	80
Hong Kong	HKCEE = Best 5 subjects with a minimum of 4 D's	HKDSE	Best 5 category A or C subjects = 13	Best 5 category A or C subjects = 13 (HB Stream)  Best 5 category A or C subjects = 14 (Psych Stream)	Best 5 category A or C subjects = 14	Best 5 category A or C subjects = 14
	HKDSE = Best 4 subjects: 40% pass rate = 55% 50% pass rate = 60%	A Levels	5	5 (HB Stream) 6 (Psych Stream)	6	6
India	All India Senior School Certificate = 60	All India Senior School Certificate (best 4 subjects)  Indian Secondary Certificate	55  50	55 (HB Stream) 65 (Psych Stream)  50 (HB Stream) 60 (Psych Stream)	65  60	65  60
Indonesia	SMA 2 = 6.5	SMA3	6.0	6.0 (HB Stream) 7.0 (Psych Stream)	7.0	7.0
Iran	Pre University Certificate = 12	Not applicable for direct entry into MC Diploma Part 2				
Japan	Year 2 Upper Secondary School Leaving Certificate = 2.5	Year 3 Upper Secondary School Leaving Certificate	3	3 (HB Stream) 3.5 (Psych Stream)	3.5	3.5
Kenya	Kenya Certificate of Secondary Education = 6.0	Kenya Certificate of Secondary Education	6.0	6 (HB Stream) 7 (Psych Stream)	7	7
Kuwait	General Secondary School Certificate = 70	Not applicable for direct entry into MC Diploma Part 2				

## Additional prerequisites

### Diploma Part 1:

Diploma of Business/Commerce Part 1: Applicants must meet the minimum score required for English and Mathematics (all Australian Year 11 equivalent).

Diploma of Engineering Part 1: Applicants must meet the minimum score required for English, Mathematics and Chemistry or Physics (all Australian Year 11 equivalent).

Diploma of Arts Part 1: Applicants must meet the minimum score required for English (Australian Year 11 equivalent).

Diploma of Art & Design Studies Part 1: Applicants must meet the minimum score required for English (Australian Year 11 equivalent).

### Diploma Part 2:

Diploma of Business/Commerce Part 2: Applicants must meet the minimum score required for English and Mathematics (all Australian Year 12 equivalent).

Diploma of Engineering Part 2: Applicants must meet the minimum score required for English, Mathematics and Chemistry or Physics (all Australian Year 12 equivalent).

Diploma of Arts Part 2: Applicants must meet the minimum score required for English (Australian Year 12 equivalent).

Diploma of Art & Design Studies Part 2: Applicants must meet the minimum score required for English (Australian Year 12 equivalent) and a folio of 10 to 15 slides of you artwork (on CD or DVD format).

The scores indicated below do not specify the different calculation methodologies which we apply in order to calculate the overall average or grade point average required.

## Diploma Part 1

## Diploma Part 2

Country	Academic entry requirements Year 11 equivalent	Academic entry requirements Year 12 equivalent				
	Qualification and score required	Qualification	A&D	Arts	Bus	Eng
Macau	Form 5 – Senior Middle Year 2 = 60	Senior Middle Year	65	65 (HB Stream) 70 (Psych Stream)	70	70
Malaysia	SPM = 15 UEC = 25	UEC	35	35 (HB Stream) 25 (Psych Stream)	25	25
		STPM	6.6	6.6 (HB Stream) 7.5 (Psych Stream)	7.5	7.5
Mauritius	O Levels = 23	A Levels	5	5 (HB Stream) 6 (Psych Stream)	6	6
Oman	Secondary School Leaving Certificate = 70	Not applicable for direct entry into MC Diploma Part 2				
Pakistan	Intermediate Certificate or Higher Secondary School Certificate = 60	Not applicable for direct entry into MC Diploma Part 2				
Qatar	Secondary School Leaving Certificate = 70	Not applicable for direct entry into MC Diploma Part 2				
Saudi Arabia	General Secondary Education Certificate = 70	Not applicable for direct entry into MC Diploma Part 2				
Singapore	GCE O Levels = 23	A Levels	5	5 (HB Stream) 6 (Psych Stream)	6	6
		All Singapore Polytechnic Diplomas	1.5	1.5 (Both Streams)	1.5	1.5
Sri Lanka	Sri Lanka O Levels = 15	Sri Lanka A Levels	6	6 (HB Stream) 7 (Psych Stream)	7	7
South Korea	Year 11 High School Diploma = 70	Upper Secondary School Certificate	75	75 (HB Stream) 80 (Psych Stream)	80	80
Taiwan	Senior High School Senior 2 = 70	Senior High School Diploma	75	75 (HB Stream) 80 (Psych Stream)	80	80
Thailand	Matayom 5 = 2.7	Matayom 6	2.2	2.2 (HB Stream) 2.7 (Psych Stream)	2.7	2.7
Turkey	State High School Diploma = 3.0 or 60	Not applicable for direct entry into MC Diploma Part 2				
United Arab Emirates	General Secondary Education Certificate = 70	Not applicable for direct entry into MC Diploma Part 2				
Vietnam	Year 11 = 7.0	Year 12 – Bang Tu Tai or Bang to Nghiep Pho Thong	6.5	6.5 (HB Stream) 7.0 (Psych Stream)	7.0	7.0

## Diploma of Art & Design Studies

The Monash College Diploma of Art & Design Studies develops a strong set of skills in architecture, fine and applied arts, industrial design, visual communication, interior architecture, multimedia and digital arts.

# Art & Design



Coming to Monash College you will get to know people from different countries and cultures. The teachers get along very well with us and are very friendly. Monash College is the best choice, because you will be excited and interested in the course.

**Chen Yuanguan,**  
Diploma of Art & Design Studies

Our academic staff are experienced practitioners and professionals in their fields. As teachers, they can guide, inspire and prepare you for entry to the University and develop the foundations of a career in art and design.

Successful completion of the Diploma will lead into the first or second year of a degree in the vibrant Faculty of Art Design & Architecture at Monash University.

## Course structure

You must successfully complete 17 units to achieve a Diploma of Art & Design Studies. This includes 16 compulsory units and one elective unit.

In Part 2, Trimester 1 of the Diploma, you will choose between two streams:

- **Visual Communication/Multimedia and Digital Arts/Industrial Design**
- **Architectural Design/Interior Architecture.**

In Part 2, Trimester 2 of the Diploma, you will choose between two streams:

- **Visual Communication**
- **Multimedia and Digital Arts.**

## Part 1 units

### 8 months, 2 trimesters

- Drawing A
- Drawing B
- Art and Design Theory A
- Art and Design Theory B
- Basic Design Studio A
- Basic Design Studio B
- Visual Arts Studio A
- Visual Arts Studio B

## Part 2 units

### 8 months, 2 trimesters

- Basic Design Studio C
- Art and Design Theory C
- Digital Imaging
- Drawing C
- Intro Art & Design Health & Safety
- Architecture Studio 1
- Photomedia Imaging 1
- Typography
- 3D Design and Visualization
- Creating Digital Content
- Graphic Design Studio
- Multimedia Design Studio

## Destination degrees

Bachelor of	Code	Years	Intake semester	Entry average mark	Campus
<b>Completion of Diploma Part 1</b>					
Architectural Design <sup>#</sup>	3119	3	S1	75%	Caulfield
Design (Visual Communication)	2123	3	S1	75%	Caulfield
Multimedia and Digital Arts	3115	3	S1	75%	Caulfield
Industrial Design <sup>#</sup>	2122	4	S1	75%	Caulfield
Interior Architecture	2126	4	S1	75%	Caulfield
Fine Arts	2119	3	S1	75%	Caulfield
Visual Arts	2479	3	S1	75%	Caulfield
<b>Completion of Diploma Part 2, Trimester 1</b>					
Industrial Design <sup>#</sup>	2122	3.5	S2	50%	Caulfield
Interior Architecture	2126	3.5	S2	50%	Caulfield
Architectural Design <sup>#</sup>	3119	2.5	S2	75%	Caulfield
<b>Completion of Diploma Part 2, Trimester 2</b>					
Design (Visual Communication)	2123	2	S1/2	50%	Caulfield
Multimedia and Digital Arts	3115	2	S1/2	50%	Caulfield

### Notes:

- Part 2 units are streamed according to the specific destination degree. Refer to course structure at [www.monashcollege.edu.au/diplomas](http://www.monashcollege.edu.au/diplomas).
- <sup>#</sup>Students without a Year 12 Maths will be required to complete additional maths units within their Diploma program to meet the entry requirement of their destination degree.
- While students who achieve the minimum average are guaranteed entry to second year, choice of individual disciplines is subject to a quota based on academic performance.
- The minimum average grade indicated above is for international students only does not apply to domestic students. Domestic students need to apply through the Victorian Tertiary Admissions Centre (VTAC) for entry into a Monash University bachelor degree program.
- Destination degree entry requirements listed above are based on 2012 entry and should be used as a guide only. See [www.monashcollege.edu.au/diplomas](http://www.monashcollege.edu.au/diplomas) for more information.

## Diploma of Arts

If you are looking to enter into a degree that is flexible and will open the door to a wide range of career opportunities then the Diploma of Arts is for you.

# Arts



Monash College has taught me the importance of independent learning and has given me the confidence to develop my own opinions. The Diploma of Arts has opened my eyes to real-life media in a way I didn't see before.

**Vu Phi Vu,**  
Diploma of Arts

With a Diploma of Arts you will develop a range of skills that are highly valued in today's rapidly changing work environment. The multicultural atmosphere of the College will enable you to develop a truly globalised understanding of the world.

The Diploma of Arts offers an excellent grounding in the specialist areas of Communications, Journalism and Psychology. With our 'hands on' approach to learning, you will have the skills to hit the ground running in second year at Monash University.

## Course structure

You must successfully complete 16 units to achieve a Diploma of Arts. This includes 15 compulsory units and one elective unit.

In Part 2 of the Diploma, you will choose between two streams:

- Human Behaviour
- Psychology

## Part 1 units

### 8 months, 2 trimesters

- Media Studies A: Film Studies
- Introduction to Journalism
- The Art of Communication
- Data Analysis
- Media Studies B: Mass Communication and the Modern World
- Intercultural Business Communication
- Introduction to Psychology
- \* The Modern World
- \* Introductory to Mathematics for Business

\* Unit selection depends on destination degree.

## Part 2 units

### 8 months, 2 trimesters

- Effective Writing 1: Academic Writing
- Media and Culture
- Understanding Human Behaviour<sup>#</sup>
- Journalism 1
- Journalism 2
- Communications and Society
- Introduction to Social Behaviour<sup>#</sup>
- Psychology 1A<sup>^</sup>
- Psychology 1B<sup>^</sup>
- Managerial Communication
- Contemporary Worlds

<sup>#</sup>Human Behaviour stream only  
<sup>^</sup>Psychology stream only

## Destination degrees

Bachelor of	Code	Years	Intake semester	Entry average mark	Campus
<b>Completion of Diploma Part 1</b>					
Arts (offering Majors in over 40 academic disciplines, including, Psychology, Communications, Behavioural Studies and many more)	0002	3	S1/2	80%	Caulfield Clayton
Arts (Global)	3910	3	S1/2	80%	Caulfield
Arts (Professional Communication)	1708	3	S1/2	80%	Gippsland
Professional Communication	1275	3	S1/2	80%	Berwick Malaysia
Journalism	4042	3	S1/2	80%	Caulfield
Arts (Journalism)	2396	3	S1/2	80%	Gippsland
Architectural Design	3119	3	S1/2	80%*	Caulfield
Arts and Social Sciences	4073	3	S1/2	80%	Gippsland
<b>Completion of Diploma Part 2</b>					
Arts (offering Majors in over 40 academic disciplines, including, Psychology, Communications, Behavioural Studies and many more)	0002	2	S1/2	50%	Caulfield Clayton Gippsland South Africa
Arts (Global)	3910	2	S1/2	50%	Clayton
Arts (Professional Communication)	1708	2	S1/2	50%	Gippsland
Professional Communication	1275	2	S1/2	50%	Berwick Malaysia
Journalism	4042	2	S1/2	50%	Caulfield
Arts (Journalism)	2396	2	S1/2	50%	Gippsland
Arts and Social Sciences	4073	2	S1/2	50%	Gippsland

Notes:

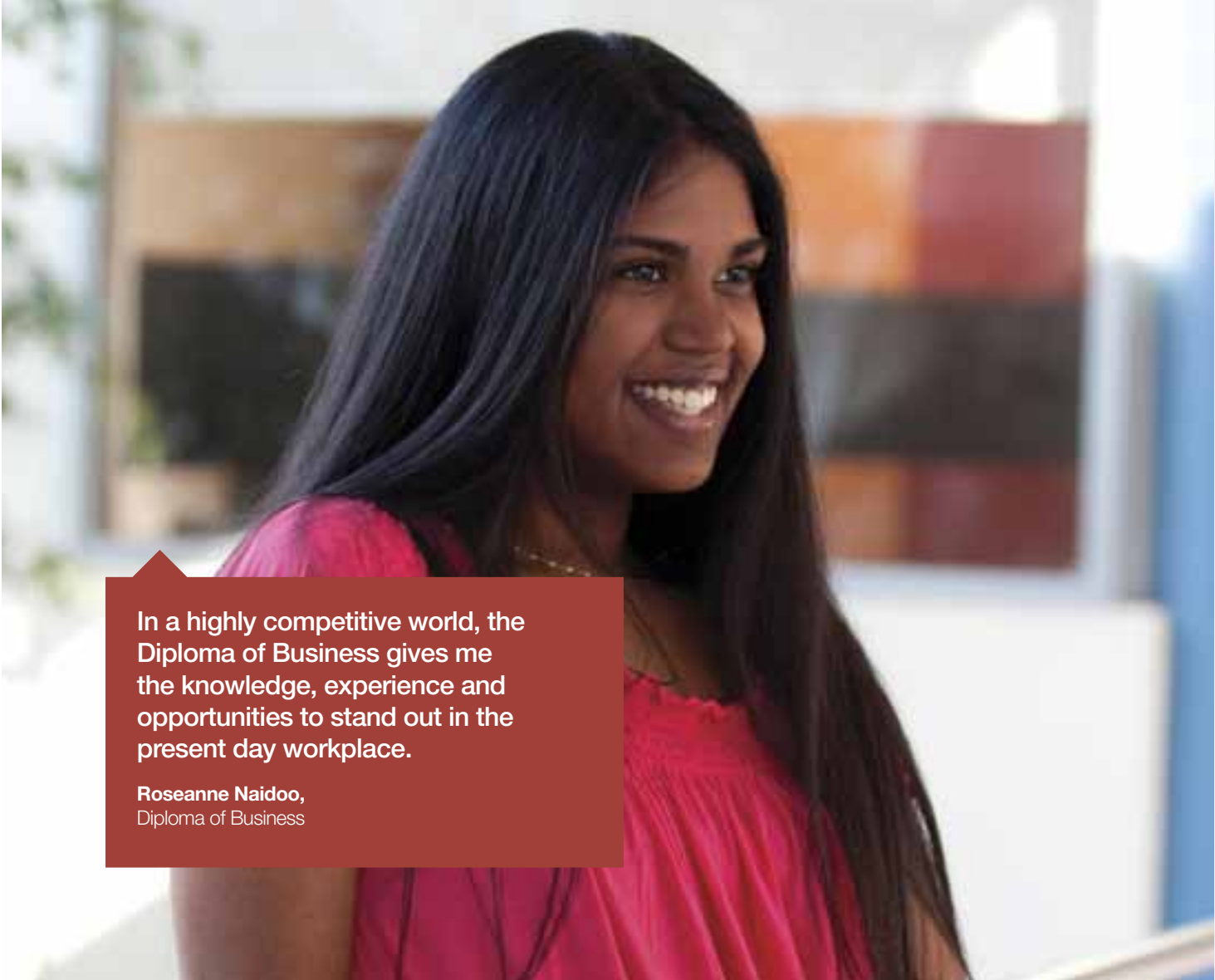
- The minimum average grade indicated above is for international students only does not apply to domestic students. Domestic students need to apply through the Victorian Tertiary Admissions Centre (VTAC) for entry into a Monash University bachelor degree program.
- Destination degree entry requirements listed above are based on 2012 entry and should be used as a guide only. See [www.monashcollege.edu.au/diplomas](http://www.monashcollege.edu.au/diplomas) for more information.

CRICOS code: 061625F

## Diploma of Business

The Monash College Diploma of Business is an ideal starting point for a career in business, industry, a government or non-government body or an international organisation.

# Business



In a highly competitive world, the Diploma of Business gives me the knowledge, experience and opportunities to stand out in the present day workplace.

**Roseanne Naidoo,**  
Diploma of Business

On successful completion of the Diploma of Business, you may move into one of the many degrees offered by the Faculty of Business and Economics at Monash University.

## Course structure

You must successfully complete 16 units to achieve a Diploma of Business. This includes 14 compulsory units and two elective units .

From Part 1 of the Diploma, you will choose between two streams:

- **Business**
- **Commerce**

Individual streams lead to specific destination degrees and have different course structures. Visit [www.monashcollege.edu.au/diplomas](http://www.monashcollege.edu.au/diplomas) for details.

## Part 1 units

### 8 months, 2 trimesters

- Accounting for Business
- Introduction to Management
- Introductory Mathematics for Business
- Introductory Mathematics for Commerce and IT
- Introductory Economics
- Introduction to Marketing
- Additional Mathematics for Commerce
- Data Analysis
- Introductory Law
- Intercultural Business Communication

## Part 2 units

### 8 months, 2 trimesters

- Accounting 1
- Microeconomics
- Management 1: Managing People & Organisations
- Marketing 1: Marketing Theory & Practice
- Business Law
- Business Statistics
- Management 2: Managerial Communication
- Accounting 2
- Macroeconomics
- Marketing 2: Buyer Behaviour
- Functions & their Applications
- Media & Culture
- Communications & Society

## Destination degrees

Bachelor of	Stream	Code	Years	Intake semester	Entry average mark	Campus
<b>Completion of Diploma Part 1</b>						
<b>Business and Commerce</b>	Business	2224	3	S1/2	80%	Gippsland Malaysia
<b>Business</b>	Business	3806	3	S1/2	80%	Caulfield Berwick
<b>Economics</b>	Commerce	0023	3	S1/2	80%	Clayton
<b>Commerce</b>	Commerce	0179	3	S1/2	80%	Clayton
<b>Completion of Diploma Part 2</b>						
<b>Business</b>	Business	3806	2	S1/2	65%	Caulfield Berwick
<b>Business (Accounting)</b>	Business	0315	2	S1/2	65%	Caulfield
<b>Business (Banking and Finance)</b>	Business	0312	2	S1/2	65%	Caulfield
<b>Business (Law)</b>	Business	3154	2	S1/2	65%	Caulfield
<b>Business (Marketing)</b>	Business	0314	2	S1/2	65%	Caulfield
<b>Business (Psychology)</b>	Business	4407	2	S1/2	65%	Caulfield
<b>Business Science</b>	Business	4415	2	S1/2	50%	South Africa
<b>Business Science (Accounting)</b>	Business	4413	2	S1/2	50%	South Africa
<b>Business &amp; Commerce</b>	Business	2224	2	S1/2	50%	Gippsland Malaysia
<b>Commerce (Accounting and Finance)</b>	Commerce	2015	2	S1/2	70%	Clayton
<b>Economics</b>	Commerce	0023	2	S1/2	70%	Clayton
<b>Commerce</b>	Commerce	0179	2	S1/2	70%	Clayton
<b>Commerce (Accounting)</b>	Commerce	4410	2	S1/2	70%	Malaysia

### Notes:

- While students who achieve the minimum average are guaranteed entry to second year, choice of individual disciplines is subject to quota and academic performance.
- The minimum average grade indicated above is for international students only does not apply to domestic students. Domestic students need to apply through the Victorian Tertiary Admissions Centre (VTAC) for entry into a Monash University bachelor degree program.
- Destination degree entry requirements listed above are based on 2012 entry and should be used as a guide only.  
See [www.monashcollege.edu.au/diplomas](http://www.monashcollege.edu.au/diplomas) for more information.

## Diploma of Engineering Studies

The Monash College Diploma of Engineering Studies will teach you to think analytically and technically about science and engineering. It's a direct path into the internationally renowned Faculty of Engineering at Monash University.

# Engineering



I've always wanted to study Mechanical Engineering and a Monash College Diploma of Engineering was the pathway to my goal. Being on campus I have the opportunity to use the Engineering facilities so when I start my degree next year I will already feel part of the faculty.

**Darshan Patel,**  
Diploma of Engineering

Engineering qualifications can lead to a diverse range of professions in various industries. If you're interested in maths and science, the Diploma of Engineering Studies is a great start to a lifetime of innovation and opportunity.

## Course structure

The Diploma of Engineering Studies Part 2 spans three trimesters over 12 months. You must successfully complete 16 units to achieve a Diploma of Engineering Studies. This includes 10 compulsory units and six elective units.

## Part 1 units

### 8 months, 2 trimesters

- Introductory Engineering Computing
- Introductory Chemistry
- Introductory Physics
- Introductory Engineering Mathematics
- Chemistry A
- Physics A
- Engineering Mathematics A
- Engineering Practices

## Part 2 units

### 12 months, 3 trimesters

- Computing for Engineers
- Mathematics for Engineering

Plus six electives from:

- Physics for Engineering
- Chemistry for Engineering
- Process Systems Analysis
- Engineering Structures
- Electrical Systems
- Engineering Dynamics

## T3 Fast Track pathway program

The T3 Fast Track program is ideal for students who are eligible for direct entry into first year of an undergraduate Monash University Engineering degree, but do not want to wait for the March intake.

By applying for the Diploma of Engineering and commencing your studies in October, you could fast track your studies and complete your Diploma in just eight months – in time to start second year at the University in July.

## Destination degrees

Bachelor of	Code	Years	Intake semester	Entry average mark	Campus
<b>Completion of Diploma Part 1</b>					
Engineering (Disciplines include Chemical, Civil, Electrical and Computer Systems, Materials and Mechanical Engineering)	0032	4	S1/2	80%	Clayton
Engineering (Disciplines include Chemical, Electrical and Computer Systems, Mechanical and Mechatronics Engineering)	0032	4	S1/2	80%	Malaysia
<b>Completion of Diploma Part 2</b>					
Engineering (Disciplines include Chemical, Civil, Electrical and Computer Systems, Materials and Mechanical Engineering)	0032	3	S1/2	60%	Clayton
Engineering (Disciplines include Chemical, Electrical and Computer Systems, Mechanical and Mechatronics Engineering)	0032	3	S1/2	60%	Malaysia
Aerospace Engineering <sup>#</sup>	3275	3.5	S1/2	60%	Clayton
Environmental Engineering <sup>#</sup>	1253	3.5	S1/2	60%	Clayton
Mechatronics Engineering <sup>#</sup>	3280	3.5	S1	60%	Clayton

Notes:

- # Students will be required to pick up additional first year units to complete these specialist degree programs.
- A range of double degree options are also available to students. Average mark of 60% or above is required to gain entry into all double degree programs. (See [www.monashcollege.edu.au/diplomas](http://www.monashcollege.edu.au/diplomas))
- While students who achieve the minimum average are guaranteed entry to second year, choice of individual disciplines is subject to quota.
- The minimum average grade indicated above is for international students only does not apply to domestic students. Domestic students need to apply through the Victorian Tertiary Admissions Centre (VTAC) for entry into a Monash University bachelor degree program.
- Destination degree entry requirements listed above are based on 2012 entry and should be used as a guide only. See [www.monashcollege.edu.au/diplomas](http://www.monashcollege.edu.au/diplomas) for more information.

# English

**Our English Language Centre offers programs for international students and visitors seeking high quality English language training. Through a close association with Monash University, our programs will give you the best chance of success with your future study.**

### Understanding which course is right for you

We offer two types of English language programs:

- **bridging programs (for conditional offers to Monash College or Monash University)**
- **specialised English programs.**

### Bridging programs

Our English language bridging programs are available for students who have narrowly missed the entry requirements for their chosen Monash course.

Bridging programs are available for:

- **Foundation Year**
- **Diplomas**
- **Undergraduate**
- **Postgraduate**

Classes will prepare you for successful future study by improving your skills in reading, writing, speaking, listening, note taking and research.

Entry requirements for our programs vary depending on level of study. Visit [www.monashcollege.edu.au/english-language](http://www.monashcollege.edu.au/english-language) for more information.

### Specialised English programs

Our English Language Centre offers programs for anyone seeking high quality English language training.

**English for Academic Preparation** is offered to students whose English language proficiency is below the bridging program entry requirements.

**IELTS Preparation** will specifically prepare you for sitting an International English Language Testing System (IELTS) exam. You do not have to be a Monash College student to enrol and courses start from an IELTS entry level of 4.5.

**Introductory Academic Preparation** is a popular course for students wishing to prepare themselves further for the cultural, social and academic expectations of Australian study. This five week course finishes just before the start of the University semester.



Unsure which course is right for you?

Don't worry, our admissions team are available to advise which English language course best suits your needs.

## Benefits of the English Language Centre

### 1. Pathway to Monash

We help prepare you for studying at Monash College and Monash University. Our courses provide a bridge between your current English ability and what is expected in your Monash program, be it a foundation year program, diploma, undergraduate degree, or postgraduate degree.

### 2. A course for everyone

We also offer a variety of English language courses to suit particular needs. Our courses help you to get a successful IELTS result and improve your study skills.

### 3. Highly qualified teachers who care

All of our English teachers are highly qualified and experienced in teaching English to international students of all ages and levels. Their ability to create a challenging, yet supportive and comfortable environment is well known.

### 4. Integrated technology

Educational technologies are integrated into all our English Language programs. The aim of blended learning is to extend language studies beyond classroom walls while introducing students to latest useful tools and Web 2.0 technologies.

Our students continue to use these tools in their tertiary studies or when they return home, to continue developing their language and study skills.

### 5. Helping people learn English all over the world

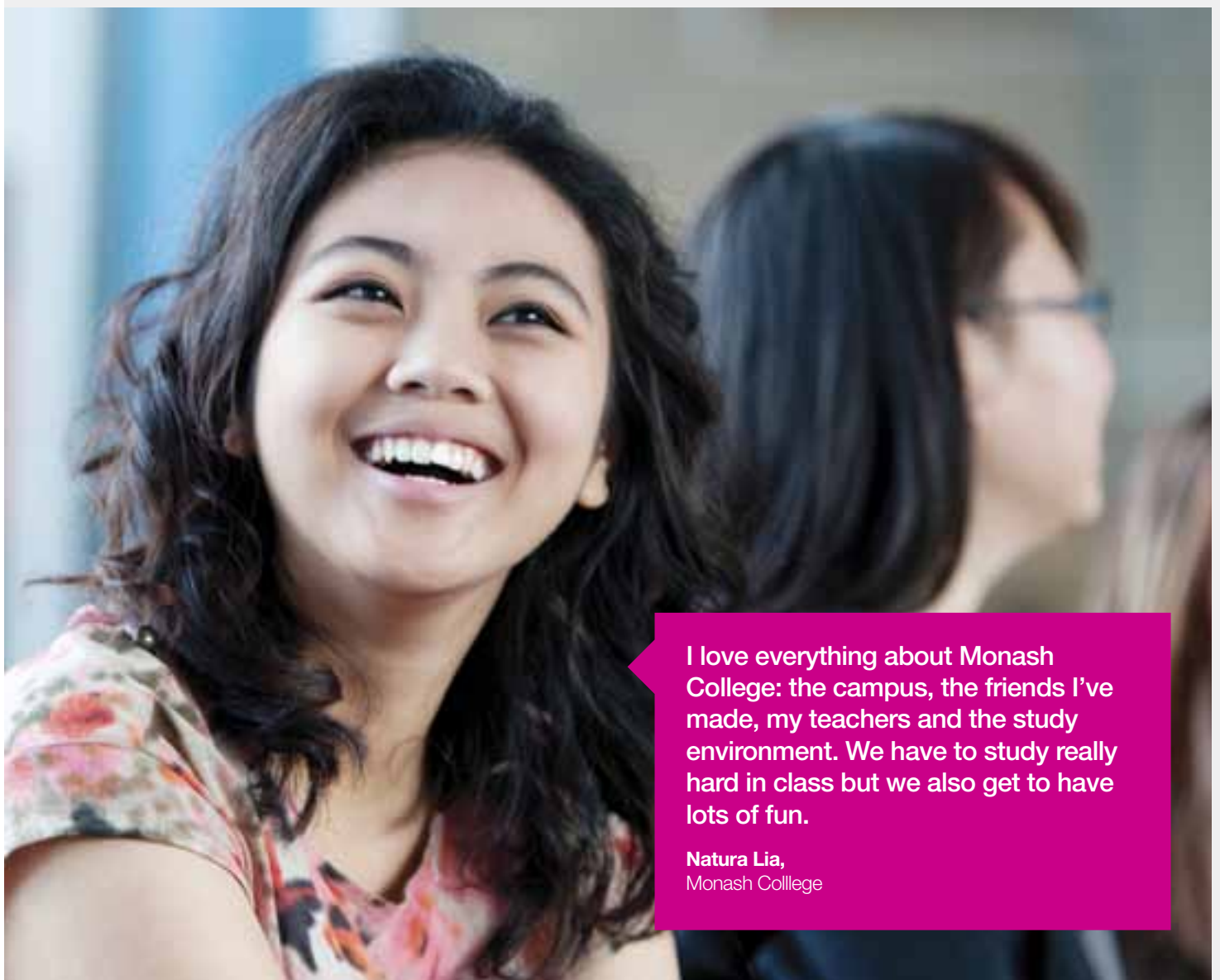
Our English language consulting service helps schools, universities, companies and governments to develop training and study group programs within their home country or for study trips to Australia.

### 6. On campus IELTS Testing Centre

In addition to assisting students and the community in improving their English language skills, we have an award winning IELTS test centre conveniently located on our Clayton campus. Our English Language Centre is one of the largest IELTS test centres in Australia.

We understand it can be a hard decision to move away from home and into university life. We offer all students a broad range of support systems to help them feel at home.

We **promise**  
you'll be encouraged  
and supported



I love everything about Monash College: the campus, the friends I've made, my teachers and the study environment. We have to study really hard in class but we also get to have lots of fun.

**Natura Lia,**  
Monash College

## Student care

Monash College gives you a secure and safe home base. Each of our programs is centred on the complete student experience and has an in-built student care system designed for your wellbeing.

Our teachers are always available to help you get to know the Australian culture and to provide advice for your transition into tertiary study.

## Learning support

You are here to learn. That's why each of our programs includes a support system, matched to your academic level, designed to help your transition into tertiary study. We will let you know more about your options for academic support during orientation.

## Student activities

While you are here to study, Monash College offers a huge range of extra-curricular options to help keep your mind fresh, your body active and help you meet new people.

## Counselling

At Monash College, we understand that the transition to living in a new country can be difficult for some students. If anything is preventing you from enjoying your academic, social or personal life, there is an on-campus counselling service for all students. The service is free and confidential.

## Health and medical

Our students have easy access to quality healthcare options.

If you are studying at our Clayton and Caulfield campuses, you have direct access to the campus medical facilities simply by presenting your Monash College ID card. By using your current overseas health cover card, you can arrange for your bill to go directly to your overseas health cover provider.

If you are studying at our Melbourne City campus, there is a large general medical centre, just five minutes walk from the campus.

## Places of worship

Monash College students come from a variety of backgrounds and beliefs. Our Clayton and Caulfield campuses have multi-faith centres open to all religious affiliations and denominations.

Our Melbourne City campus is within very close walking distance to a number of places of worship. Prayer facilities are also offered on-campus.

## Safety and security

Melbourne is a very safe place to live and study. Each Monash College campus has been designed to be a secure home base, protected by a campus security team.

Our comprehensive orientation program takes place before you start classes. It has lots of information about living in Melbourne, including tips on personal safety.

## A range of accommodation options

There are a number of great accommodation options available to you. You could choose to live with a parent or nominated relative or a close family friend.

We can also help you find a place to stay at one of the university lodges or in a supportive family environment through our Homestay program.

## Live on campus

If you are attending our Clayton or Caulfield campuses, and you are over 18, you can choose to live on-campus for a true university experience. A selection of room types is available.

## Approved student accommodation

If you are attending our campus in Melbourne City, we recommend UniLodge. Unilodge is the leading and largest student accommodation provider in Australia and New Zealand. It provides fully furnished, safe and affordable student accommodation and is just a short walk from where you'll be studying. UniLodge makes sure all residents feel a great sense of security with staff available 24 hours a day, 7 days a week. You will also have the opportunity to meet people, join groups and have some fun while you're here.

## Homestay

Homestay offers international students the opportunity to live with a local family while studying in Australia. This popular option gives you a chance to form long lasting friendships, learn new customs, improve your language skills and get a genuine cultural experience.

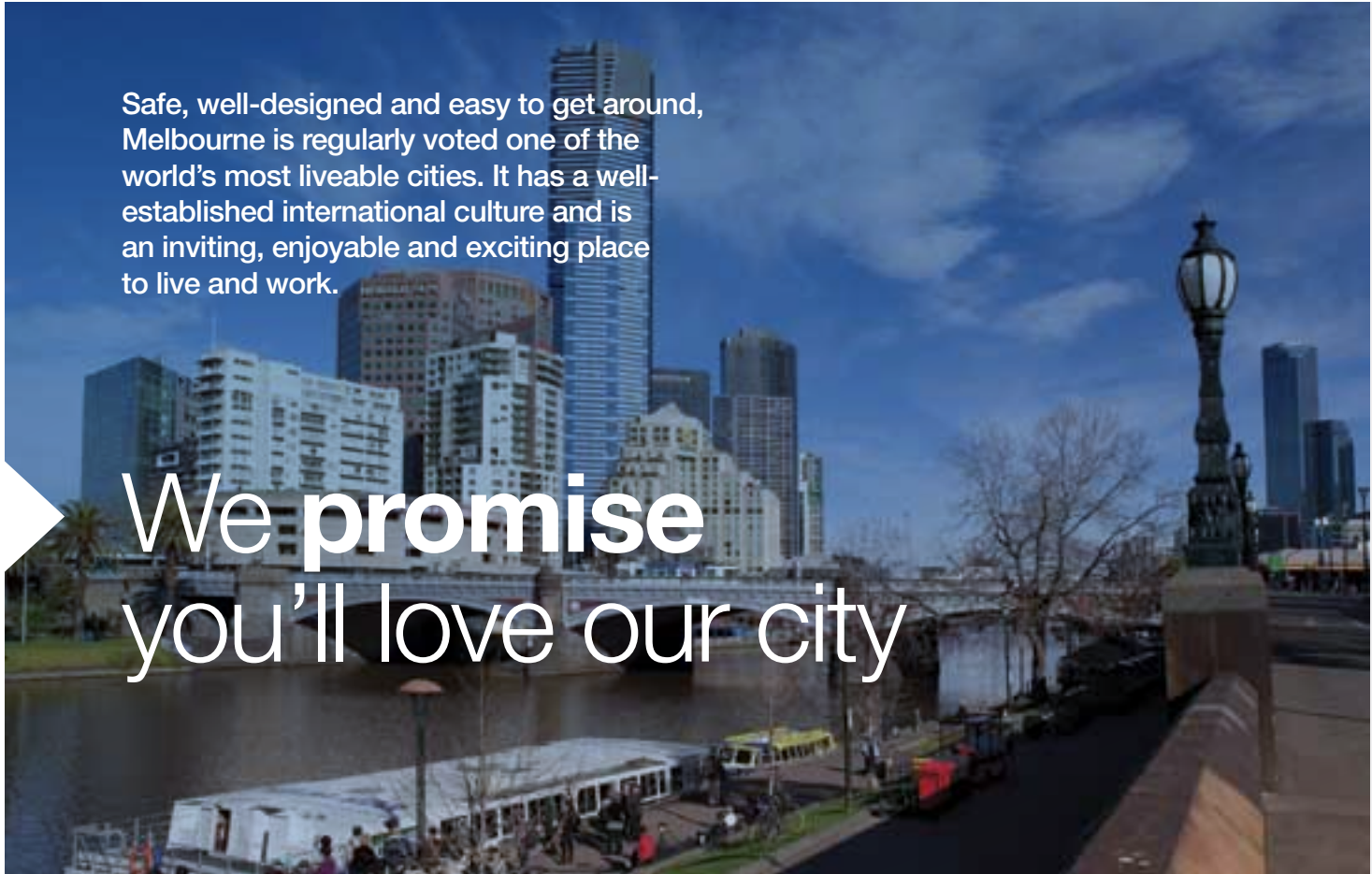
All homestay hosts are carefully screened and happy to welcome students into their home. The program makes settling into a new country much easier. You'll arrive in Australia knowing there is a stable place to live with meals and utilities included in the one fee.

## Under 18s

While many younger students are confident and independent, Monash College must, by law, approve the caregiver and accommodation arrangements of each student who is under 18 years of age, before the Department of Immigration and Citizenship (DIAC) will process the student's visa application.

Your nominated caregiver could be a parent or nominated DIAC approved relative, a non-relative or one of the Monash-approved caregiver services.

For more information visit [www.monashcollege.edu.au/live-and-study-in-australia/under-18s.html](http://www.monashcollege.edu.au/live-and-study-in-australia/under-18s.html)



Safe, well-designed and easy to get around, Melbourne is regularly voted one of the world's most liveable cities. It has a well-established international culture and is an inviting, enjoyable and exciting place to live and work.

**We promise**  
you'll love our city

Monash College's Australian campuses are located in and around the city of Melbourne, in the southern state of Victoria.

### **A multicultural capital**

Forty-five per cent of people in Victoria were born overseas, or have a parent who was born overseas. There are more than 150 different languages spoken here.

### **A cultural capital**

Melbourne is the cultural centre of Victoria and holds world-class cultural events and festivals each year. The Melbourne International Arts Festival and the Melbourne International Comedy Festival are favourites.

Melbourne is famous for its coffee culture and unique laneway cafes.

At night, the streets light up with a variety of theatres, bars, night-clubs, restaurants and concerts.

### **A sporting capital**

The city of Melbourne has a population of four million and its people are known for their love for sport. Major sporting events such as the Grand Prix, the Australian Tennis Open and the Spring Racing Carnival see Melburnians celebrate in the streets.

### **An education capital**

Melbourne values its universities, colleges and scientific and medical research institutions. A large number of international students study in Victoria, mainly in Melbourne.

Find out more at  
[www.studymelbourne.vic.gov.au](http://www.studymelbourne.vic.gov.au)

**Melbourne is ranked the world's most liveable city by the Economist Intelligence Unit.**

## How to apply

International students can apply directly to Monash College or through a Monash registered agent. If you are an international student currently studying Year 12 in Australia, you must apply through VTAC for admission to Trimester 1 of our Diploma program.

# We promise to make it easy to apply

## Apply directly

Follow these steps to apply:

- Submit certified true copies of all academic transcripts and completion certificates for all qualifications previously undertaken plus evidence of your English language proficiency.
- Complete the Monash College Application Form
- If you have applied through a Monash Registered agent they will be able to scan and email your application with supporting documentation to: ADM-Documents@monash.edu
- If you have applied directly please send your application with supporting documents via post to:  
Monash College  
International Recruitment Services  
Monash University  
871 Dandenong Road  
Caulfield East Victoria 3145  
Australia.

## Apply through an education agent

Monash has a worldwide network of registered overseas agents. Agents have information about courses at Monash College and Monash University. Visit [www.monash.edu/agents](http://www.monash.edu/agents) for a list of Monash approved agents.

## Information on student visas

You must have a valid student visa if you are an international student who wants to study in Australia. Visit [www.immi.gov.au](http://www.immi.gov.au) for further information.

## Course packaging

If you intend to study at Monash University after Monash College, or if you need to study a Monash University English language course before your Foundation Year or Diploma, you can package your courses so that you do not have to apply for a new student visa multiple times. This is the most convenient and cost effective option.

## Medical, financial and English language requirements

Depending on your country of origin, to obtain a student visa, you may also need evidence of:

- a medical check
- sufficient funds
- English language proficiency.

## Offer of enrolment

If your application is successful, you will be sent a letter of offer, acceptance documents, an accommodation guide, and other supporting information.

## Accept your offer

To accept your offer, send your acceptance offer together with your initial payment which includes:

- 50% of the full tuition fee for your nominated Monash College course.
- Overseas Student Health Cover fee to cover full period of student visa.

A Confirmation of Enrolment is issued upon receipt of the Monash College initial payment (plus \$1000 deposit towards your university degree) together with comprehensive pre-departure information for international students.

A Confirmation of Enrolment is required for a student visa application. Student visas are issued by the Australian Government and the application process may take three months or more depending on student visa assessment levels.

## 2012/2013 Fees

All fees listed in this guide are in Australian dollars.

### English Language

\$450 per week for bridging programs  
plus \$250 Administration Fee

\$395 per week for all other courses  
plus Administration Fee

### Monash University Foundation Year

Standard (8 units)

\$21,950

Intensive (8 units)

\$21,950

Extended (7 Extended units, 8 Foundation Year units)

\$31,950

Additional/repeat units

\$2,750

### Diploma

Diploma of Arts

Part 1 \$17,500

Part 2 \$19,500

Diploma of Art & Design Studies

Part 1 \$18,500

Part 2 \$20,500

Diploma of Business

Part 1 \$19,950

Part 2 \$22,000

Diploma of Engineering Studies

Part 1 \$21,500

Part 2 \$23,950

1. Course fees and other costs correct at March 1 2012.  
Note: International students are required to pay an Overseas Student Health Cover fee. More information about fees can be found at [www.monashcollege.edu.au](http://www.monashcollege.edu.au).

### Helpful tip for all applicants

The entry requirements listed within this brochure should only be considered a guide to the entry level normally required for our courses. In some instances lower academic or provisional results may be considered.

Every application we receive is carefully considered and we will make an offer to students whose school results indicate a good preparation for our study programs.

While we make every effort to ensure that information contained within the brochure is correct at time of printing, entry requirements and prerequisites are subject to change.

For a full listing of current entry requirements, prerequisite subjects and destination degrees visit [www.monashcollege.edu.au/courses](http://www.monashcollege.edu.au/courses).

## 6. Previous education

Are you currently a Monash student?  Yes  No If yes, please enter Student Number:

Have you previously applied to Monash University/Monash College?  Yes  No

Please attach certified copies of all original academic transcripts or reports and translations of all documents into English.  
Note: Documents submitted with your application remain the property of Monash University.

### Secondary qualifications

Name of qualification:

Language of instruction:  Date completed:  /  /  (or expected to be completed)

Name of institution:

Country/state:

### Highest post-secondary qualification

Name of qualification:

Language of instruction:  Date completed:  /  /  (or expected to be completed)

Name of institution:

Country/state:

## 7. Credit transfer for Monash College diplomas (if applicable)

Are you applying for credits?  Yes  No

## 8. English proficiency

Please tick the appropriate box and attach certified copies of all original results and certified copies of all documents translated into English.

English was the language of instruction in previous studies completed. Documentary evidence must be provided if institution is located in a non-English speaking country.

I have achieved a satisfactory level of performance in English as a subject in an Australian Year 11 or Year 12 equivalent course.

I will sit/have sat for an English language proficiency test.  IELTS or  TOEFL

Result (if known)  Overall  Listening  Reading  Writing/TWE/ER  Speaking

Please note, IELTS is the only English proficiency test accepted by the Australian Government for visa applications from certain countries. Test must be taken within two years prior to commencement.

I am currently enrolled or intend to enrol in an English language course.

Name of English language course:

Name of English language centre:

Number of weeks:  Start date:       Finish date:

If you do not meet the course English requirements you may be eligible for an English bridging program.

I would like to enrol in an English language course at the Monash University English Language Centre that will help me to meet the English Language requirements of my future studies.

Your letter of offer from Monash will indicate the estimated number of weeks and course details.

## 9. Parent/Guardian details for applicants under 18 years old

If you are under 18 year of age, by law, you must have acceptable arrangements for your guardianship and accommodation for the duration of your student visa or until you turn 18, whichever occurs first. Your parents and/or legal custodian can give their permission by completing this section of the Application form and submitting the Monash Under 18 Care Arrangements form (<http://www.monash.edu.au/assets/pdf/study/international/care-arrangement-form-new.pdf>) with this Application form.

Name (Parent or Guardian):

Relationship to student:  Signature

Telephone (with country code):   Mobile

Email:

## 4. Foundation Year

Please note that your offer will be packaged with your preferred Monash University degree and/or English program.

Year:   Intake:  January (Standard)  March (Intensive)  March (Extended)  
 June (Standard)  September (Intensive)  September (Extended)

The undergraduate course I would like to study at Monash University is (list in order of preference):  
Refer to [www.monash.edu/coursefinder](http://www.monash.edu/coursefinder) for guidance.

	Course name:	Course code	Commencement year	Semester	Campus
1	<input type="text"/>	<input type="text"/>	<input type="text"/>	<input type="checkbox"/>	<input type="text"/>
2	<input type="text"/>	<input type="text"/>	<input type="text"/>	<input type="checkbox"/>	<input type="text"/>
3	<input type="text"/>	<input type="text"/>	<input type="text"/>	<input type="checkbox"/>	<input type="text"/>

Campus codes: Berwick **BE**, Caulfield **CA**, Clayton **CL**, Gippsland **GP**, Malaysia **MA**, Parkville **PA**, Peninsula **PE**, South Africa **SA**

## 5. Monash College Diploma

Which Diploma and intake are you applying for?

Year:   Intake:  February  June  October

Diploma:  Part 1  Part 2  T3 Engineering (October intake only)

Art & Design Studies  Arts  Business (Business stream)  Business (Commerce stream)  
 Engineering Studies

Please note that your offer will be packaged with your preferred Monash University degree and/or English program.

Have you lodged an application with VTAC? (Applicable to February intake only)  Yes  No If Yes, date of application

Destination degrees

Diploma of Art & Design Studies

Bachelor of Design (Visual Communication)  Bachelor of Interior Architecture  
 Bachelor of Industrial Design  Bachelor of Multimedia and Digital Arts  
 Bachelor of Architectural Design  Bachelor of Fine Art (March intake only)  
 Bachelor of Visual Arts (March intake only)

Diploma of Arts

Bachelor of Arts (please select campus):  Caulfield  Clayton  Gippsland  South Africa\*  
 Bachelor of Arts (Global) – Clayton campus only  Bachelor of Journalism – Caulfield campus only  
 Bachelor of Arts (Journalism) – Gippsland campus only  Bachelor of Professional Communication – Berwick campus only  
 Bachelor of Arts (Professional) – Gippsland campus only

Diploma of Business

Bachelor of Business and Commerce (please select campus):  Gippsland  Malaysia\*  South Africa\*  
 Bachelor of Business  Bachelor of Commerce  
 Bachelor of Business (Accounting)  Bachelor of Commerce (Accounting and Finance)  
 Bachelor of Business (Banking and Finance)  Bachelor of Economics  
 Bachelor of Business (Law)  Bachelor of Business (Accounting)/Bachelor of Business (Banking & Finance)  
 Bachelor of Commerce/Bachelor of Economics  Bachelor of Business (Accounting)/Bachelor of Business (Management)  
 Bachelor of Business (Marketing)  Bachelor of Business (Management)/Bachelor of Business (Marketing)

Diploma of Engineering Studies

Bachelor of Engineering (in the fields of chemical, civil, electrical and computer systems, materials or mechanical)  
 Bachelor of Aerospace Engineering  
 Bachelor of Civil and Environmental Engineering – Gippsland campus only  
 Bachelor of Computer Systems Engineering  
 Bachelor of Environmental Engineering  
 Bachelor of Mechatronic Engineering

\*Students wishing to complete their degree in Malaysia or South Africa need to apply directly to Monash University Malaysia or Monash South Africa.



## Monash University Foundation Year and Monash College Diploma application form – international students

Indicate which event application was collected at (staff use only):

Which course do you wish to apply for?  Monash University Foundation Year  Monash College Diploma

### 1. Visa-related information

Are you a citizen or permanent resident of Australia, or citizen of New Zealand?  Yes  No If Yes, please use the domestic students application form.

Do you have a current Australian visa?  Yes  No

If Yes, Visa type and expiry date:

Note: Only international students are eligible to enrol in the Monash University Foundation Year program. A change of visa status to become an Australian permanent resident during the Foundation Year or a Monash College Diploma program may invalidate the degree pathway guarantee. Visit [www.monashcollege.edu.au/how-to-apply/student-visas.html](http://www.monashcollege.edu.au/how-to-apply/student-visas.html) for more information.

Please attach a certified copy of your passport.

### 2. Personal details

Family name: (as in passport)

Given name(s): (as in passport)

Date of birth:  Gender:  Male  Female

Agent and agent's address (if applicable):

Code:

Country:

Your postal address:

Code:

Country:

Telephone (with country code):   Mobile

Email: (mandatory)

#### Country of residence

Nationality: (as in passport)

Country of birth: (as in passport)

### 3. Students with disabilities

Do you have a disability, impairment or long-term medical condition that may affect your studies?  Yes  No

If yes, Monash will require medical documentation from a relevant treating professional outlining the impact of your condition on your ability to meet the university academic demands. Disclosure of disability is treated confidentially and will not be used to disadvantage you. The Disability Liaison Unit at Monash may contact you to discuss the services available. More information: [www.monash.edu.au/equity-diversity/disability](http://www.monash.edu.au/equity-diversity/disability)



## English Language Intake calendar

Term	Dates	English for Academic Preparation	IELTS Preparation	English Language Bridging	Introductory Academic Preparation
<b>2012</b>					
1	4 Jan – 3 Feb	5 weeks	5 weeks		5 weeks
2	6 Feb – 9 March	5 weeks	5 weeks	20 weeks	
3	12 March – 13 April	5 weeks	5 weeks	15 weeks	
4	16 April – 18 May	5 weeks	5 weeks	10 weeks	
5	21 May – 22 June	5 weeks	5 weeks		5 weeks
6	25 June – 27 July	5 weeks	5 weeks		
7	30 July – 31 Aug	5 weeks	5 weeks		
8	3 Sept – 5 Oct	5 weeks	5 weeks	20 weeks	
9	8 Oct – 9 Nov	5 weeks	5 weeks	15 weeks	
10	12 Nov – 14 Dec	5 weeks	5 weeks	10 weeks	
<b>2013</b>					
1	7 Jan – 8 Feb	5 weeks	5 weeks		5 weeks
2	11 Feb – 15 March	5 weeks	5 weeks	20 weeks	
3	18 March – 19 April	5 weeks	5 weeks	15 weeks	
4	22 April – 24 May	5 weeks	5 weeks	10 weeks	
5	27 May – 28 June	5 weeks	5 weeks		5 weeks
6	1 July – 2 Aug	5 weeks	5 weeks		
7	5 Aug – 6 Sept	5 weeks	5 weeks		
8	9 Sept – 11 Oct	5 weeks	5 weeks	20 weeks	
9	14 Oct – 15 Nov	5 weeks	5 weeks	15 weeks	
10	18 Nov – 20 Dec	5 weeks	5 weeks	10 weeks	
<b>2014</b>					
1					

\*Program duration depends on language level on entry and the destination faculty

# Foundation Year Intake calendar

Foundation Year												
2012												
Jan												
Feb												
March	<b>English Bridging</b> (15 weeks)											
April												
May												
June												
July		<b>Standard</b> 15 July – 24 May										
Aug												
Sept		<b>Intensive</b> 3 Sept – 24 May	<b>Extended</b> 3 Sept – 8 Nov	<b>English Bridging</b> (15 weeks)								
Oct												
Nov												
Dec												
2013												
Jan				<b>Standard</b> 29 Jan – 8 Nov								
Feb												
March						<b>Intensive</b> 18 March – 8 Nov	<b>Extended</b> 18 March – 23 May	<b>English Bridging</b> (15 weeks)				
April												
May												
June												
July	Start Destination degree	Start Destination degree					<b>Standard</b> 15 July – 23 May					
Aug												
Sept									<b>Intensive</b> 2 Sept – 23 May	<b>Extended</b> 2 Sept – 7 Nov		
Oct												
Nov												
Dec												
2014												
Jan												
Feb												
March	Start Destination degree	Start Destination degree	Start Destination degree	Start Destination degree	Start Destination degree							
April												
May												
June												
July											Start Destination degree	Start Destination degree
Aug												

# Diplomas

## Intake calendar

### Diploma

2012								
Jan								
Feb								
March	<b>English Bridging</b> (15 weeks)	<b>English Bridging</b> (15 weeks)						
April								
May								
June	<b>Part 1</b> 11 June – 29 Jan	<b>Part 2</b> 11 June – 29 Jan	<b>English Bridging</b> (15 weeks)	<b>English Bridging</b> (15 weeks)				
July								
August								
September								
October			<b>Part 1</b> 8 Oct – 4 June	<b>Part 2</b> 8 Oct – 4 June	<b>English Bridging</b> (15 weeks)	<b>English Bridging</b> (15 weeks)		
November								
December								
2013								
Jan								
Feb	<b>Part 2</b> 18 Feb – 1 Oct	Start Destination degree			<b>Part 1</b> 18 Feb – 1 Oct	<b>Part 2</b> 18 Feb – 1 Oct		
March								
April								
May								
June			<b>Part 2</b> 17 June – 4 Feb				<b>Part 1</b> 17 June – 4 Feb	<b>Part 2</b> 17 June – 4 Feb
July					Start Destination degree			
Aug								
Sept								
Oct					<b>Part 2</b> 14 Oct – June			
Nov								
Dec								
2014								
Jan								
Feb							<b>Part 2</b> February intake	
March	Start Destination degree		Start Destination degree			Start Destination degree		
April								
May								
June								
July					Start Destination degree			
Aug								

**Further information**

International Recruitment Services  
871 Dandenong Road  
Caulfield East, Victoria 3145  
Australia

Phone: +61 3 9903 4788  
Email: [study@monash.edu](mailto:study@monash.edu)

**[www.monashcollege.edu.au](http://www.monashcollege.edu.au)**

**Australian citizens and permanent residents**

Australian citizens and permanent residents may undertake any of the Monash College Diplomas but not the Foundation Year.

Further information about courses, fees and application procedures for Australian citizens and permanent residents may be obtained by visiting [www.monashcollege.edu.au](http://www.monashcollege.edu.au)