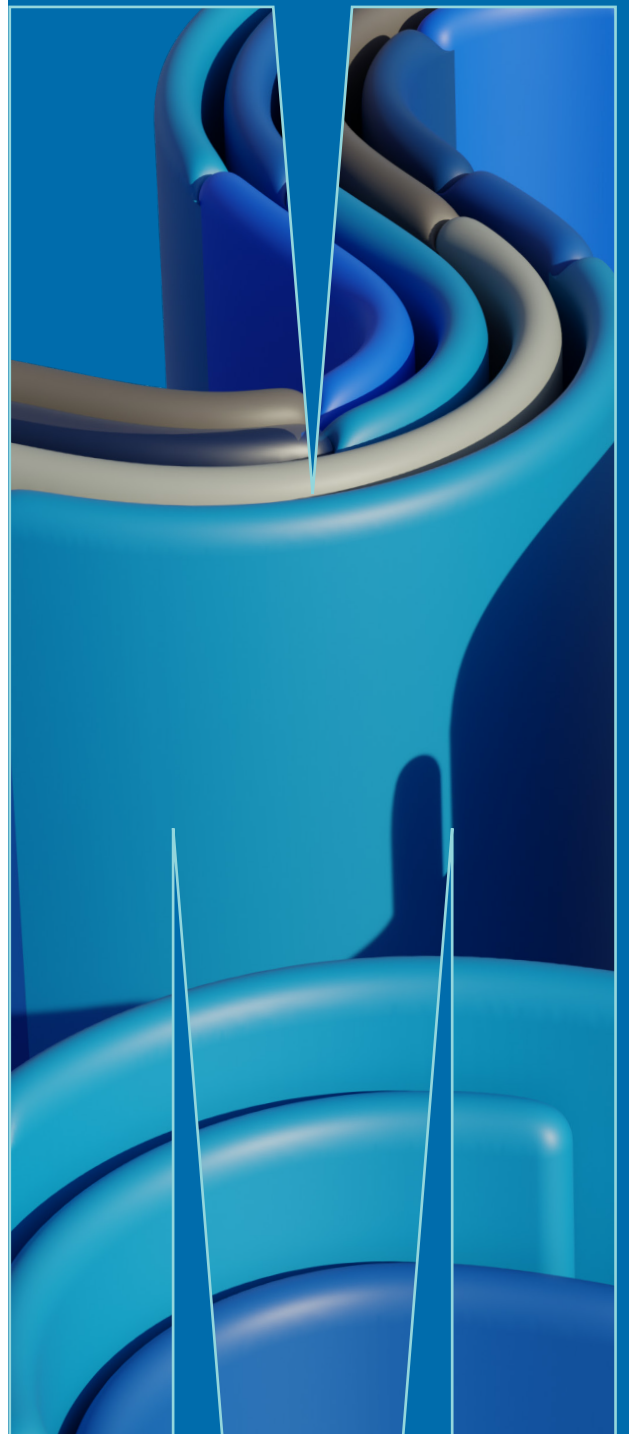
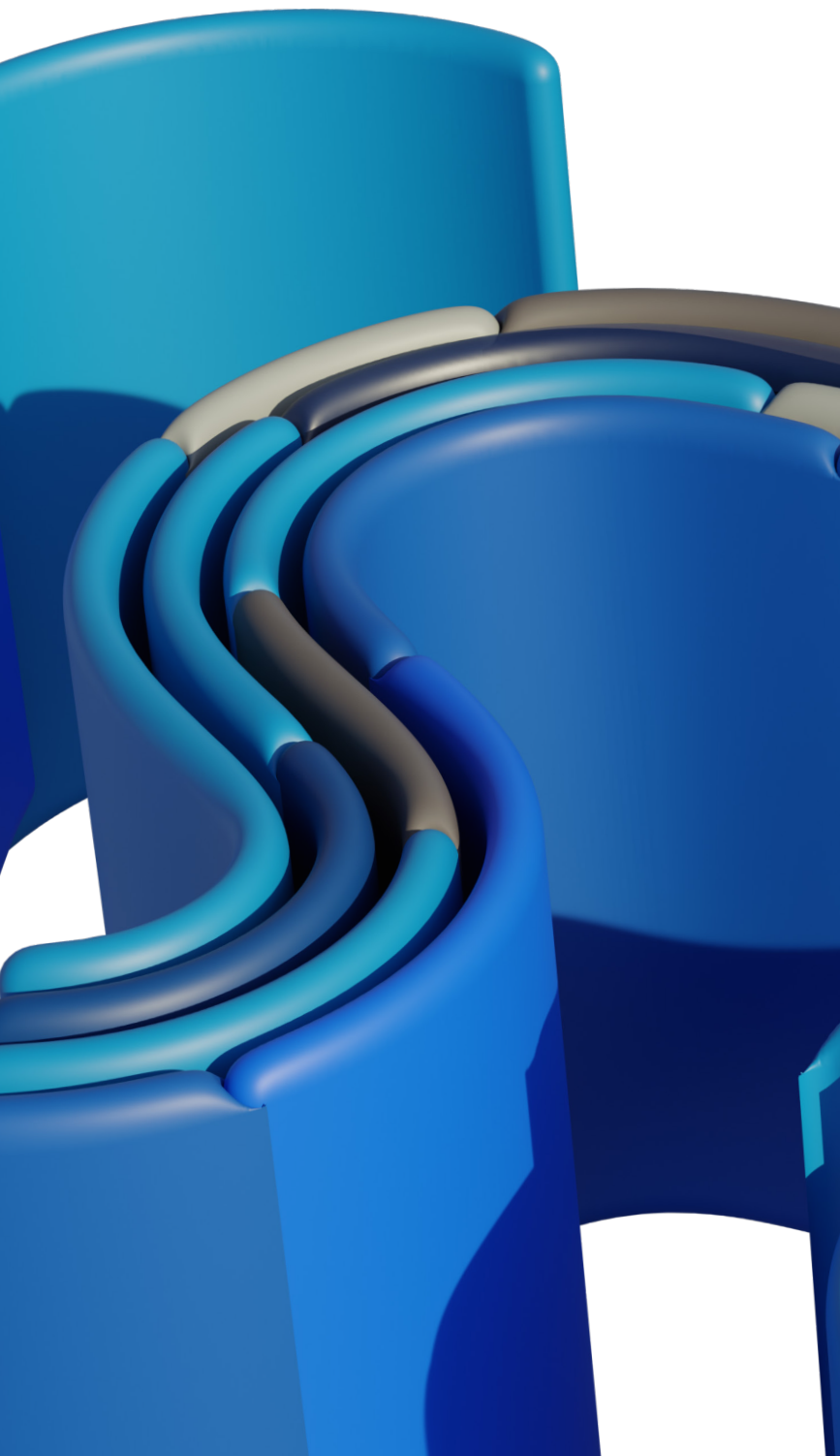




MONASH PATHWAY PROGRAMS 2027

A guide for international students



TOP 100 RANKINGS

#36

QS WORLD UNIVERSITY
RANKINGS (2026)

#38

IN THE WORLD
US NEWS AND WORLD
REPORT (2025-26)

#58

TIMES HIGHER EDUCATION
(THE) WORLD UNIVERSITY
RANKINGS (2026)

#63

TIMES HIGHER EDUCATION
(THE) WORLD REPUTATION
RANKINGS (2025)

#76

SHANGHAI ACADEMIC
RANKING OF WORLD
UNIVERSITIES (2025)

ARE YOU MONASH READY?

Discover our pathway programs to undergraduate study at Monash University. Learn about Monash College and the unique aspects of living in Melbourne.

OUR PATHWAY PROGRAMS

From day one, our pathway programs focus on helping you develop the skills you'll need to succeed at Monash University. You'll experience the same high-quality education as you will at the University, in a supportive learning environment tailored to your needs.

MONASH ADVANCED PREPARATION PROGRAM (PG. 12–13)

Designed for successful Year 12 graduates who narrowly miss direct undergraduate entry, the Monash Advanced Preparation Program (MAPP) is an intensive 16-week accelerated pathway into first year at Monash University.

FOUNDATION YEAR (PG.14–15)

Owned and operated entirely by Monash College, the Foundation Year pathway is a pre-university program with guaranteed¹ entry into first-year undergraduate courses for all 10 faculties at Monash University.

DIPLOMA (PG.16–17)

The Diploma program will allow you to specialise from day one and fast-track into a second-year undergraduate degree¹ offered by one of Monash University's seven faculties. Our Monash College educators will teach you at the Monash University Melbourne City campus.²

ENGLISH LANGUAGE (PG. 28–29)

The Monash English program is the core English language pathway for you to meet the English requirements for Foundation Year, MAPP, Diploma, and your Monash University course. Developed and delivered by Monash College, this program is designed to help you succeed at University.

¹ Entry requirements into Monash College and Monash University apply, please refer to pages 30–39 for details.

² Students who successfully complete a relevant Diploma and satisfy the entry requirements will be guaranteed entry into second-year of an undergraduate degree at Monash University (other conditions apply).

ACKNOWLEDGEMENT OF COUNTRY

Monash recognises that its campus is located on the unceded lands of the people of the Kulin Nations, and pays its respects to their Elders, past and present.



Monash University is one of the most innovative and international universities in the world, proudly ranked among the top 50 universities globally. The breadth of our academic expertise, the diversity of our student cohort, the excellence of our teaching and research, and the scale of our alumni network, all combine to provide our students with transformative opportunities and experiences.

Our international students are an integral part of the Monash community, making an important contribution to the University's diverse fabric and to wider Australian society.

Monash College has played an integral role in providing students with a world-class education and a guaranteed pathway to study at Monash University. You'll discover that Monash College is more than just a place of learning – it's a community where students from diverse backgrounds come together to embark on a transformative journey.

Monash graduates have gone on to successful careers, becoming leaders in their respective fields, making significant contributions to society and embodying the values instilled in them during their time at the College.

I wish you the very best for your studies and trust that you will come to look back on your time at Monash as a formative moment in your educational journey."

PROFESSOR SHARON PICKERING

**Vice-Chancellor and President
Monash University**

OUR STUDENTS AND STAFF



86,000+
STUDENTS FROM MORE THAN
170 COUNTRIES



17,000+
STAFF



500,000+
MONASH ALUMNI
AROUND THE WORLD

WELCOME TO THE MELBOURNE CITY CAMPUS

Monash College is located at the Monash University Melbourne City campus at 750 Collins Street.

From day one, you'll benefit from a connected, enriched and immersive student experience and build a deep connection with Monash University ahead of commencing your destination degree.

As a Monash College student, you'll have access to world-class facilities, including modern teaching and learning environment, art and design studios, library, science labs and music studios, as well as informal spaces for quiet study, group assignments and to socialise with friends.

At our Melbourne City campus, you'll study alongside students and staff from Monash University and be a part of a diverse and connected community from day one. You'll also be close to everything Melbourne has to offer, including museums, libraries, restaurants, shopping, parkland, sporting facilities and public transport.

Each year, the College welcomes thousands of students into our safe, inclusive and respectful campus community – where you'll find everything you need to settle into Melbourne and achieve your educational goals.





WELCOME AND EVENTS HALL

On your first day at Monash College, step into our expansive Welcome and Events Hall. This is where you'll experience concerts, exhibitions, and exciting student activities including Orientation, the Student Fair, and Lunar New Year celebrations and more.



LIBRARY

Our library is more than just a place to borrow books and resources. Split over two levels, you'll find places to seek support from our Learning Skills Advisers and library staff. You'll also be able to take advantage of the numerous spaces to study quietly or take part in workshops.



SCIENCE LABS

A dedicated science floor on Level 10 includes 11 fully equipped laboratories.

Comprising both 'dry' and 'wet' laboratories, these modern facilities will provide you with a great learning environment to focus on discovery and experimentation across the sciences and to prepare you for success at Monash University.



STUDENT HUB

Level 4 is home to our Student Hub, a one-stop-shop for all student services administration, advice and support. If you have a question about your enrolment, an appointment with a student counsellor or guardian, or want to attend a drop-in session with a careers adviser, student club activity or mindfulness workshop, the Hub is the place to go. There are also male and female multi-faith rooms in the Hub.



ART AND DESIGN WORKSHOP STUDIO

On Level 5 you will experience the cutting-edge Art and Design Workshop. Our state-of-the-art studios come fully equipped with a laser cutter, 3D printers, and an array of essential tools including drill presses, band saws, and grinders, even a spray painting room. Our collaborative studios and the inspiring surroundings provide our students with a dynamic and creative space to bring their visions to life.



GET TO KNOW MELBOURNE



Experience studying in a city with a reputation for welcoming international students.

WELCOME TO LIFE IN MELBOURNE.

In Melbourne, there's always something exciting to see and do – an abundance of culture and art festivals, international sporting events, world-class cafés and restaurants with cuisines from all over the globe, and laneways, parks and beaches waiting to be explored. It's easy to see why the Australian lifestyle is so attractive.

The city has been described as having four seasons in one day, but that's all part of the charm. It's a good idea to be prepared, so pack an umbrella and a warm jacket for winter (June to August), and your sunscreen, hat and sunglasses for the summer months (December to February).



STUDY IN ONE OF THE
TOP 5 MOST LIVEABLE CITIES¹



LIVE IN ONE OF THE
TOP 10 SAFEST CITIES IN THE WORLD²



ONE OF THE
TOP 5 BEST STUDENT CITIES IN THE WORLD³



TRAVEL EASILY WITH
EXCELLENT PUBLIC TRANSPORT INCLUDING BUSES, TRAINS, AND A FREE CBD TRAM USING ONE TRAVEL CARD⁴



BELONG TO ONE OF THE
MOST CULTURALLY DIVERSE CITIES IN THE WORLD WITH MORE THAN 140 CULTURES REPRESENTED⁵

¹ Economist Intelligence Unit 2025.

² Safe Cities Index 2024 – The Economist Intelligence Unit.


³ QS Best Student Cities 2026.

⁴ www.ptv.vic.gov.au








⁵ www.melbourne.vic.gov.au/multicultural-communities

1 Monash College 

Entertainment

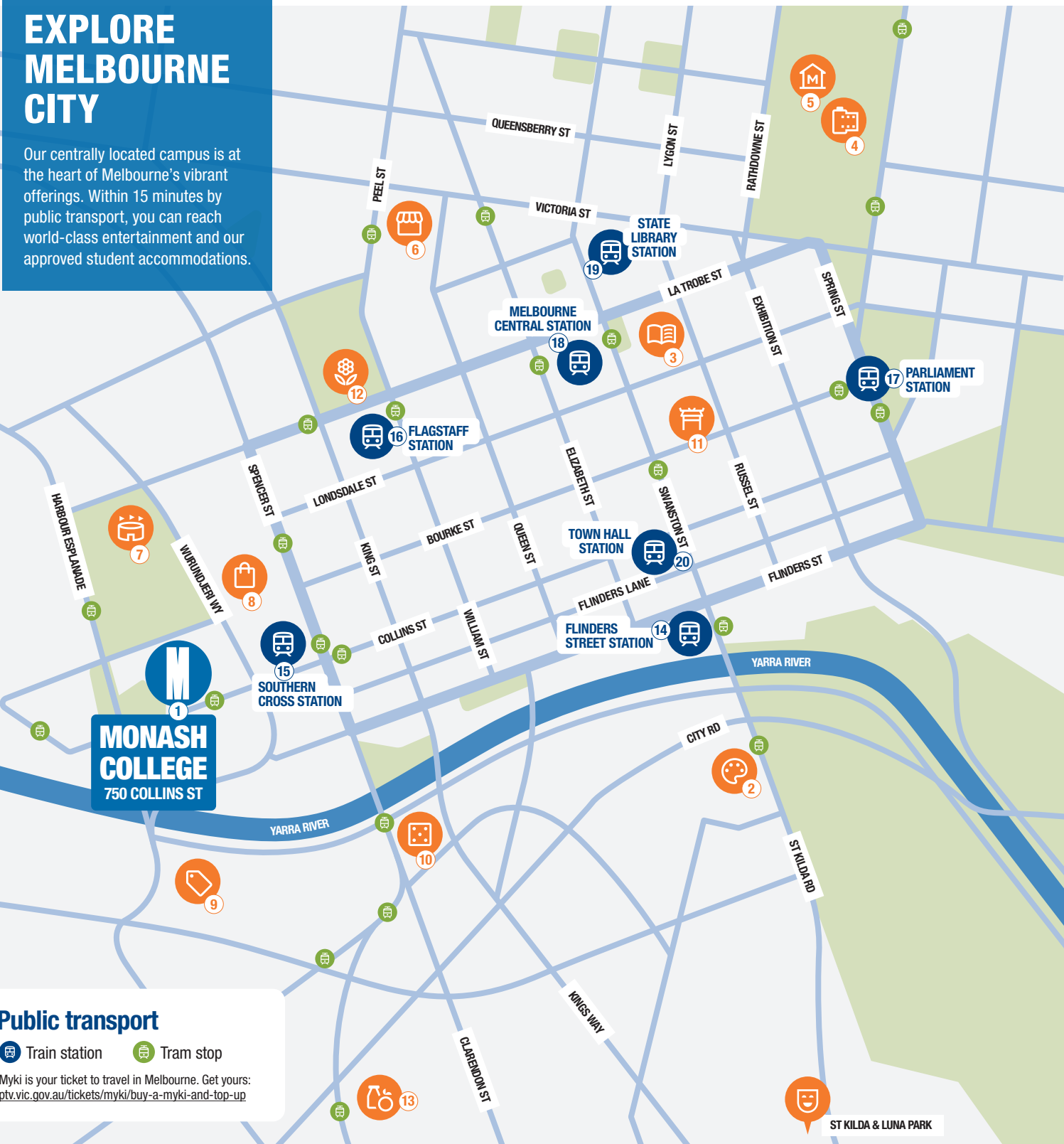
- 2 National Gallery of Victoria 
- 3 State Library Victoria 
- 4 Carlton Gardens & IMAX 
- 5 Melbourne Museum 
- 6 Queen Victoria Market 
- 7 Marvel Stadium 
- 8 Spencer Outlet Centre 
- 9 Crown Melbourne 
- 10 DFO South Wharf 
- 11 Chinatown Melbourne 
- 12 Flagstaff Gardens 
- 13 South Melbourne Market 

Public Transport


- 14 Flinders Street Station 
- 15 Southern Cross Station 
- 16 Flagstaff Station 
- 17 Parliament Station 
- 18 Melbourne Central Station 
- 19 State Library Station 
- 20 Town Hall Station 

EXPLORE MELBOURNE CITY

Our centrally located campus is at the heart of Melbourne's vibrant offerings. Within 15 minutes by public transport, you can reach world-class entertainment and our approved student accommodations.



Public transport

-  Train station
-  Tram stop

Myki is your ticket to travel in Melbourne. Get yours: ptv.vic.gov.au/tickets/myki/buy-a-myki-and-top-up

HOW WE'LL SUPPORT YOU

Our promise is simple yet effective: We commit to lead with care and create a welcoming, safe, and inclusive campus environment. We're dedicated to providing comprehensive support services to help you thrive academically, personally, and professionally throughout your pathway journey. For us, success goes beyond the classroom.



ACCOMMODATION

Finding your home away from home

Choosing the right accommodation is an important part of your student experience. We offer a range of approved accommodation options close to our Melbourne City campus, suitable for students of all ages. For further information, visit monashcollege.edu.au/study/life-at-monash-college/accommodation

Recommended student accommodation

Our student accommodation providers offer secure apartment-style living with fully furnished rooms, 24/7 staff support, unlimited internet, study areas, gyms and social spaces – all minutes from campus by public transport.

Homestay

Live with a local family through our approved homestay providers. Experience Australian culture with meals included and practice your English in everyday situations.

Independent living

If you're over 18 years old, you can rent independently or share with friends.

Visit www.realestate.com.au or www.domain.com.au to explore properties, or monash.edu/accommodation-private to find out more.

UNDER-18 GUARDIANSHIP SERVICE

Specialist support for younger students

Our dedicated in-house Under-18 Guardianship team helps you settle into Melbourne with care and support. Visit monashcollege.edu.au/guardianship-team to learn more.

Here's how it works

While you're studying your pathway program, you'll meet your guardian every two weeks, or more often if you need to. Your guardian will help you with:

- Orientation and settling in
- Guidance in opening a bank account
- Arranging medical appointments
- Emergency support
- Tracking attendance and academic progress
- Regular communication with your parents.



WELLBEING AND SAFETY

Supporting you to succeed

Thriving as a student is not only about getting through your coursework and simply passing exams. Our wellbeing support helps you build resilience, manage challenges and make the most of your student experience. Our support services include:

Counselling

Free, confidential support for personal, academic or emotional challenges. Our counsellors help you develop strategies to manage stress, homesickness, anxiety and other difficulties.

Career support

Get guidance on course selection, subject choices, leadership opportunities, scholarships and part-time job applications. Complete your pathway with a clear career plan.

24/7 security

Our campus is monitored around the clock. After-hours support is available for emergencies – whether you've lost your wallet, been locked out, or need help getting home.

Academic and learning support

Our Student Success Advisors provide assessment preparation, mathematics and English support, drop-in sessions, workshops and peer mentoring.

Student engagement

Balance study with fun by joining student clubs, taking part in on-campus events and exploring Melbourne through excursions – get involved and build lifelong connections. Join the Student Leadership Program to learn new skills as you contribute to the College community.

To view our full range of support services, visit monashcollege.edu.au/student-support



DELIVERING THE PROMISE OF MONASH UNIVERSITY

At Monash College, our connected, immersive and excellent student experience begins from day one of your pathway program – building your confidence, your community, and your connection to Monash University. From College to Campus events to a range of transition activities, you will have the opportunity to activate campus life, build friendships, and engage with the University community.



CHOOSE YOUR MONASH PATHWAY PROGRAM

We offer three accredited academic pathway programs into Monash University undergraduate degrees: Monash University Foundation Year, Monash Advanced Preparation Program and Diploma¹. All you need to do is decide which one is best for you.

ALL OPTIONS

- Provide guaranteed entry into Monash University².
- Demonstrate our student-centred teaching style.
- Have multiple intakes a year to align with your high school exams.
- Use technology to make learning more interesting and practical.
- Have proven success in developing high-performing graduates.

BENEFITS OF THE FOUNDATION YEAR PROGRAM

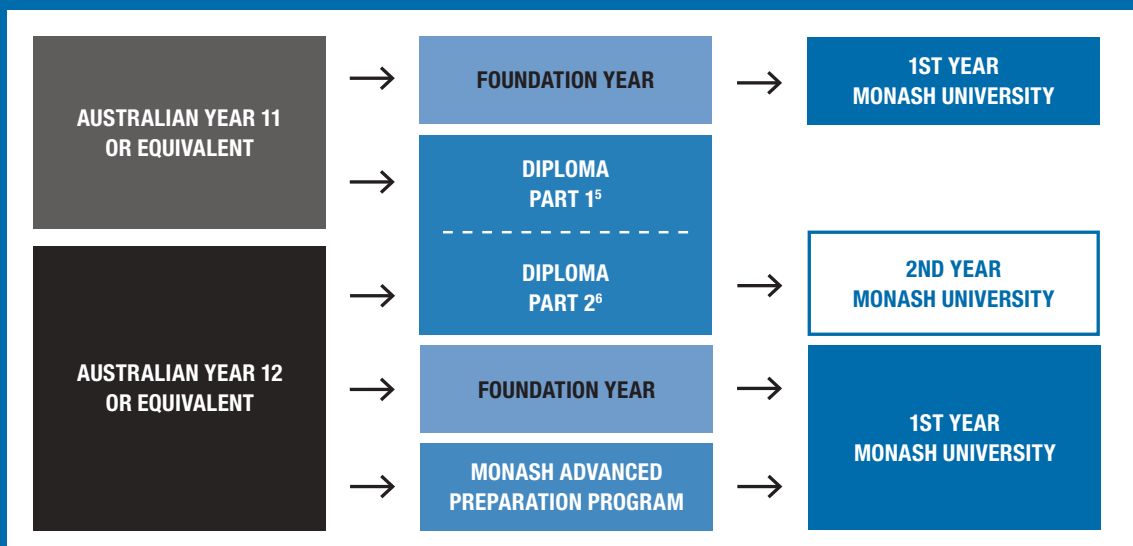
- Flexibility to choose your subjects.
- English is the only subject prerequisite for entry into the program².
- Change your destination degree at the end of the program.
- Enter into first year of all 10 faculties at Monash University².
- Direct pathway into degrees in Medicine, Nursing and Health Sciences, Pharmacy and Law.

BENEFITS OF THE MONASH ADVANCED PREPARATION PROGRAM

- Fast-track into your chosen degree in just 16 weeks.
- Personalised academic support.
- Develop university-level study skills and critical thinking.
- Guaranteed progression to first year undergraduate degrees upon successful completion³.

BENEFITS OF THE DIPLOMA PROGRAM⁴

- Specialise from day one – only study subjects related directly to your University undergraduate degree.
- Flexible entry points.
- Fast-track your studies by studying three trimesters a year.
- Direct pathway into second year of a related undergraduate degree.⁴



¹ The Monash University Foundation Year is owned and delivered by Monash College Pty Ltd, CRICOS Provider Code 01857J. The Monash Advanced Preparation Program is accredited by Monash University (CRICOS Provider Code: 00008C) and delivered by Monash College Pty Ltd (CRICOS Provider Code: 01857J) on behalf of the University. Monash College Diplomas are awarded and delivered by Monash College (CRICOS Provider Code: 01857J).
² Foundation Year and Monash Advanced Preparation Program offer international students guaranteed entry into the first year of a Monash University undergraduate degree. Diploma offers international students guaranteed entry into second year of Monash University undergraduate courses in a related field (other conditions may apply). Entry requirements apply, please refer to pages 34–39 for details.

HOW TO CHOOSE THE RIGHT PATHWAY

1

First, think about what you want to study at university. Align a Monash University degree with your interests.

2

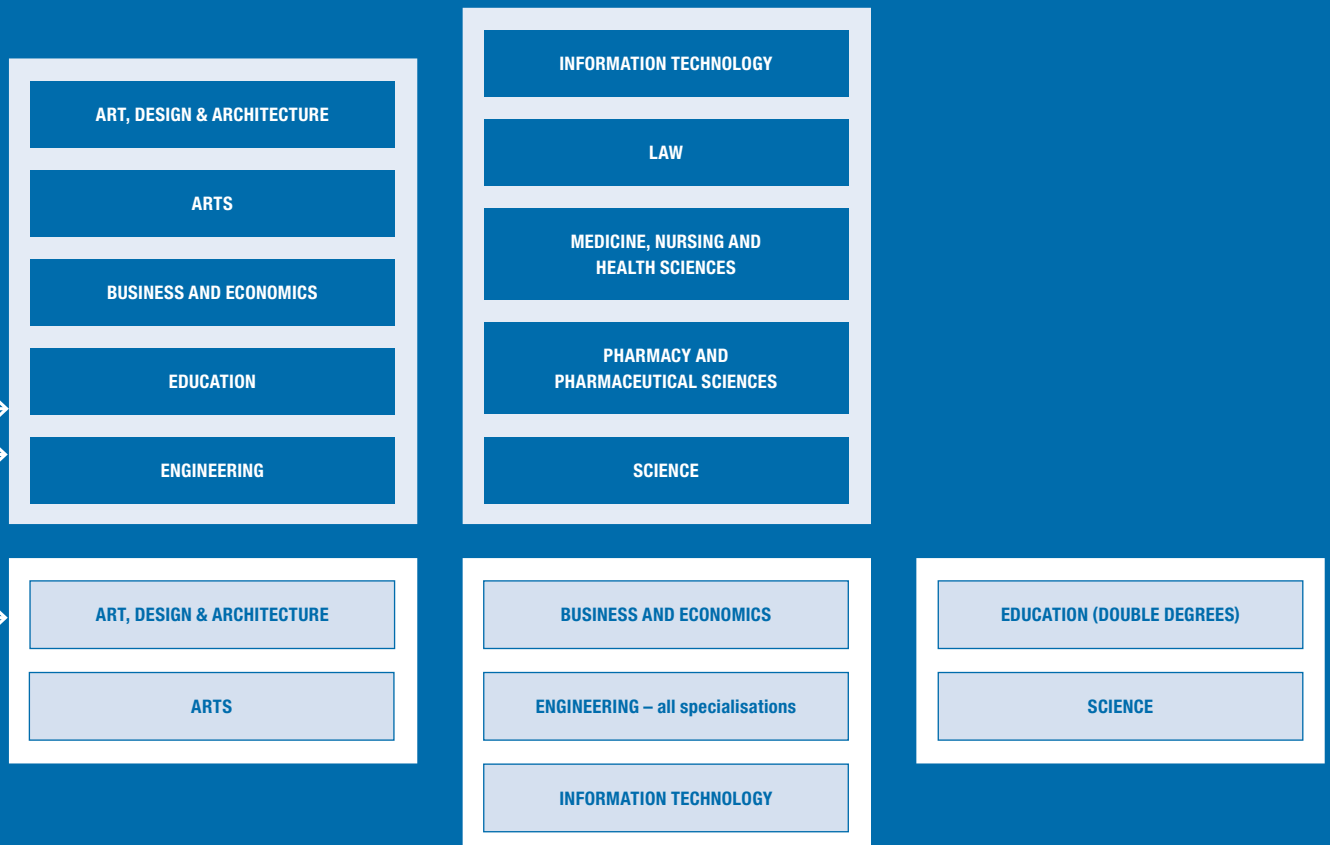
Assess your pathway options (into Monash University) and decide which one suits you best.

3

Once you've decided on your pathway, check the entry requirements (pages 32–39).

4

You're now ready to apply!
monash.edu/study/how-to-apply




3 Exclusions apply, please visit monashcollege.edu.au/study/courses/monash-advanced-preparation-program for further information.


4 The Diploma is a 96-credit-point course.

5 If you have completed an Australian Year 11 with the required scores (or equivalent) you'll be eligible for entry into our Diploma and must complete 96 credit points (both Diploma part 1 and 2).

6 If you have completed an Australian Year 12 with the required scores (or equivalent) you'll be eligible for entry into our Diploma and will receive 48-credit-point exemptions for part 1, reducing your course duration.

MONASH ADVANCED PREPARATION PROGRAM


 First year Monash University

 Docklands

 Australia

 4 months full-time

 February and October

 Five hours a week, per unit



A\$27,000

This fee is indicative only, based on the 2026 fees p.a. and is subject to change.

Program ownership

The Monash Advanced Preparation Program is accredited by Monash University (CRICOS Provider Code: 00008C) and delivered by Monash College Pty Ltd (CRICOS Provider Code: 01857J) on behalf of the University.

AUSTRALIAN YEAR 12 OR EQUIVALENT¹



MONASH ADVANCED PREPARATION PROGRAM



1ST YEAR MONASH UNIVERSITY

Your fast-tracked pathway to a Monash University degree.

The Monash Advanced Preparation Program (MAPP) offers a fast-tracked pathway to Monash University for students who have narrowly missed the entry requirements for their undergraduate degree. This focused 16-week program is designed for successful Year 12 graduates (or equivalent qualifications) ready to bridge the gap and achieve their university goals.

Through targeted learning and personalised support, you'll build the academic skills and confidence needed to thrive at university.

Upon successful completion and meeting entry requirements, you'll have guaranteed entry² into undergraduate degrees across all 10 Monash University faculties.

Delivered face-to-face in a supportive learning environment, the program is structured to give you the best possible start to your Monash journey.

go.monash.edu/MAPP



PROGRAM FEATURES

Guaranteed pathway

Enter the first year of an undergraduate degree at Monash University across 10 faculties² provided you meet the entry requirements.

Accelerated pathway

Complete the program in 16 weeks and begin your university journey after one semester.

Tailored support

Every aspect of the program is designed to prepare you for success in your chosen undergraduate degree.

Targeting learning

Study units aligned with your future undergraduate destination degree for a focused academic experience.

WHAT YOU'LL STUDY

The Monash Advanced Preparation Program deepens your knowledge in key subject areas while developing the essential university skills you'll use throughout your degree. Through focused, discipline-relevant content, you'll learn to communicate effectively in academic English, think critically and solve problems, learn both independently and collaboratively, and manage your time responsibly.

Course structure

You'll complete four units during the 16-week program:

- One compulsory unit in Introduction to Academic Communication, and
- Three units aligned with your undergraduate destination degree.

Teaching and learning

Learning is delivered through a mix of engaging tutorials, independent and collaborative learning, and real-world assessments embedded throughout the semester.

¹ Senior secondary school leaving certificates approved by Monash are accepted for entry into the Monash Advanced Preparation Program.
² Exclusions apply, please visit go.monash.edu/MAPP for further information.



FOUNDATION YEAR



First year Monash University



Docklands



Australia



12-18 months
(depending on program and start date)



February and August (Standard Program)



Five hours a week, per unit



Standard: A\$42,300

Extended: A\$57,100

Based on 2026 fees p.a. subject to change.

Program ownership

The Monash University Foundation Year is owned and delivered by Monash College Pty Ltd (CRICOS Provider Code 01857J).



Prepare for success at Monash University with direct entry into undergraduate degrees in all 10 faculties.

Monash University Foundation Year is a pre-university program with proven success in preparing international students for Monash University. As a Foundation Year student, you'll develop your academic and English skills to the level expected of Monash University students, while studying subjects that prepare you for your future undergraduate degree.

Our supportive environment and dedicated teaching and support staff will guide you each step of the way, helping you to achieve your academic potential.

monashcollege.edu.au/foundation-year

AUSTRALIAN YEAR 11 OR 12 OR EQUIVALENT



FOUNDATION YEAR



1ST YEAR MONASH UNIVERSITY

STANDARD PROGRAM

(12 months)

CRICOS code: 071178G

Intakes: February and August

The Standard Foundation Year Program is the most popular among our students. It offers the widest range of subject choices, helping you to enter all 10 Monash faculties. After successfully completing the Standard Program and achieving the set requirements, you'll have guaranteed entry into first year at Monash University.

Foundation Year is taught over two semesters. Each semester you'll complete a minimum of four units (including English, which is compulsory). You'll also have the option to complete a bonus unit each semester, which could help you increase your final score.

EXTENDED PROGRAM

(18 months)

CRICOS code: 072824G

Intakes: February and August

The 14-week extended semester gives you additional support in the areas of Maths, Science and English. This option is recommended for those who don't have a strong background in these subjects or who are looking for additional academic support.

During the extended semester, you'll complete four extended units to build your confidence and academic skills. These units don't contribute to your final score, but will prepare you for success when you enter the Standard Program.

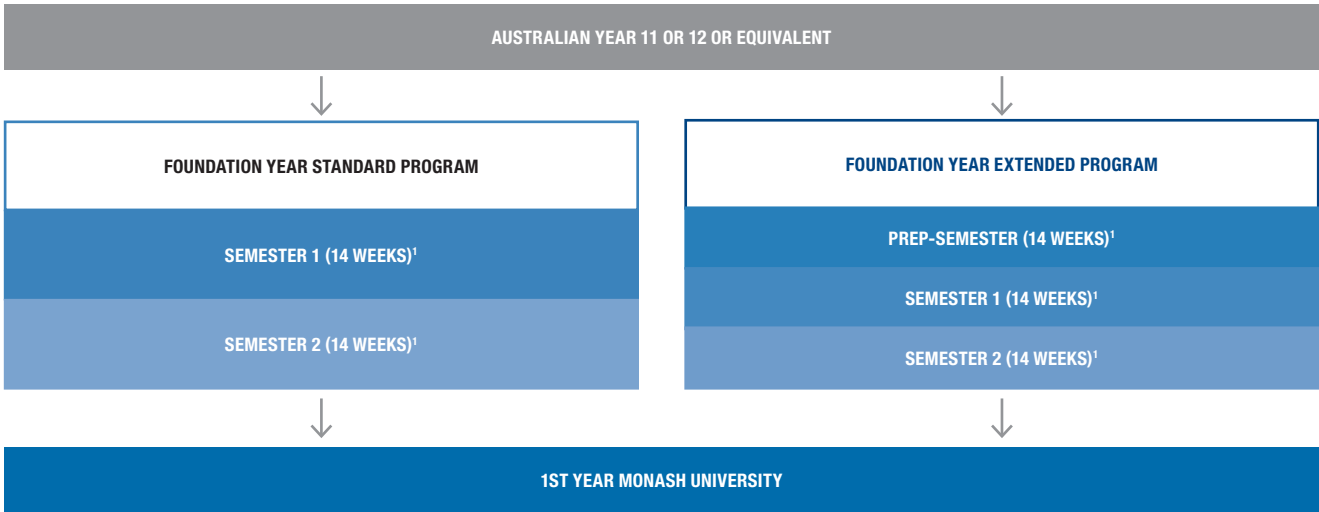
Note: Please refer to pages 36-37 for Foundation Year academic entry requirements.



I chose my double degree as I want to use the technology that I'll learn in my Computer Science degree, to solve issues in other areas of business, like finance and economics."

JINJIE DAI (JAY) (CHINA)

Foundation Year, Bachelor of Commerce and Bachelor of Computer Science graduate.
Currently, Project Leader at OD00.



WHAT YOU'LL STUDY

We offer 13 subjects as part of the Standard Foundation Year program, and six subjects as part of the Extended program. Each subject is offered in two parts:

- unit 1 introduces you to the subject area and key themes
- unit 2 expands your knowledge and understanding.

To successfully complete Foundation Year, you must complete:

- units 1 and 2 of English (compulsory subject)
- units 1 and 2 of at least two other subjects
- two additional units (stand-alone units or paired subject units).

Each subject has a set of learning objectives aligned with the requirements for Monash University undergraduate degrees. Our curriculum combines essential theory and practical knowledge with the four skills critical to your future studies and your career: critical thinking, problem solving, communication and collaboration.

4 ENGLISH ELECTIVE 1
ELECTIVE 2
ELECTIVE 3 **+1** BONUS ELECTIVE (OPTIONAL)

Assessments

Assessments take place throughout both semesters to provide you with regular feedback about how you're progressing with your learning, your areas of strength, and those that need improvement. Assessments are a combination of assignments, tests, presentations, lab investigations and reports. For most units, your final mark will be based primarily on assessments completed throughout your course. In some units, a final exam or project may also contribute to your overall result. By week four, you'll have completed your first assessment. Based on your results, your teacher will help you identify areas of strength and those that need improvement.

¹ Excludes exams, SWOT and breaks.

DIPLOMAS



Second year
Monash University



Docklands



Australia



Part 1: 9 months¹
Part 2: 9 to 12 months¹



February, June, October¹



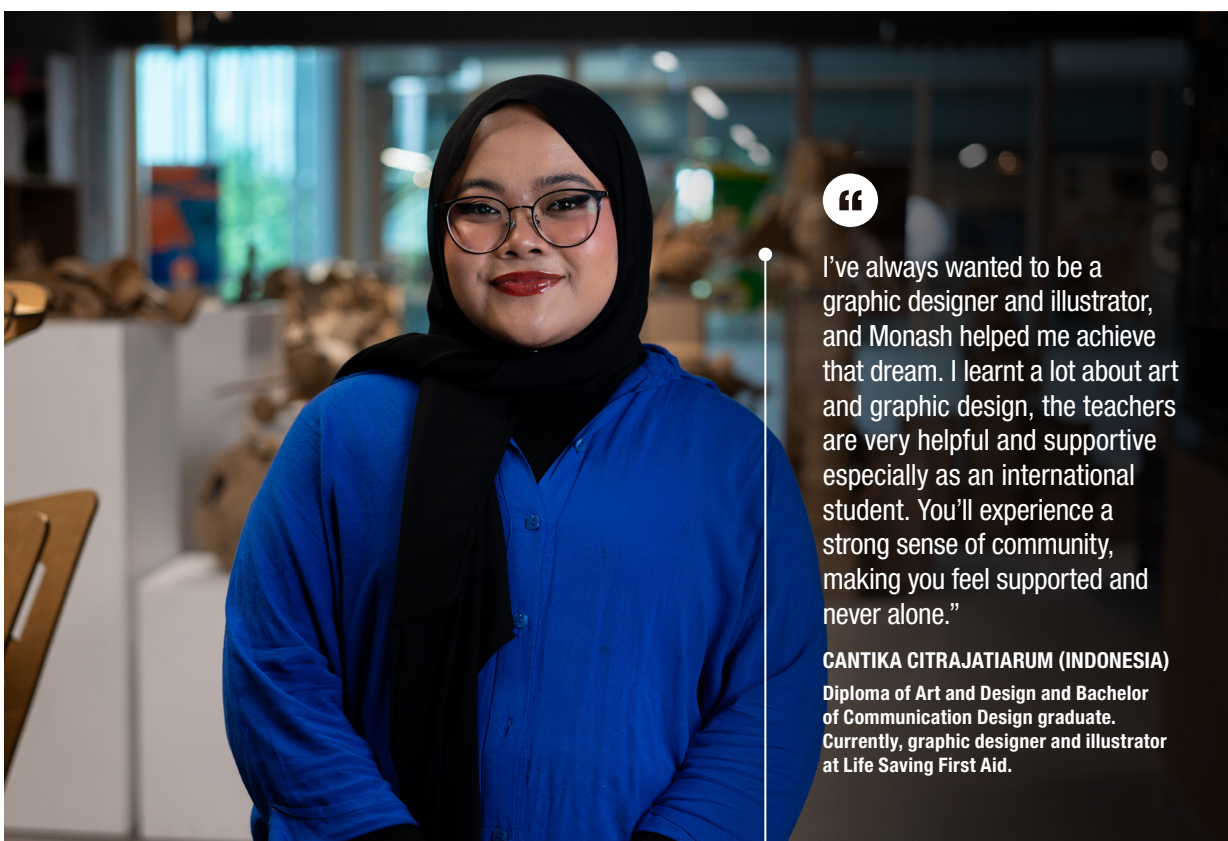
Four to seven hours a week,
per unit



A\$35,400 to A\$46,000
(2026 fees p.a.) Based on Diploma part 2; subject
to change.

Program ownership

Monash College Diplomas are awarded and
delivered by Monash College (CRICOS Provider
Code: 01857J).



I've always wanted to be a graphic designer and illustrator, and Monash helped me achieve that dream. I learnt a lot about art and graphic design, the teachers are very helpful and supportive especially as an international student. You'll experience a strong sense of community, making you feel supported and never alone."

CANTIKA CITRAJATIARUM (INDONESIA)

Diploma of Art and Design and Bachelor of Communication Design graduate. Currently, graphic designer and illustrator at Life Saving First Aid.



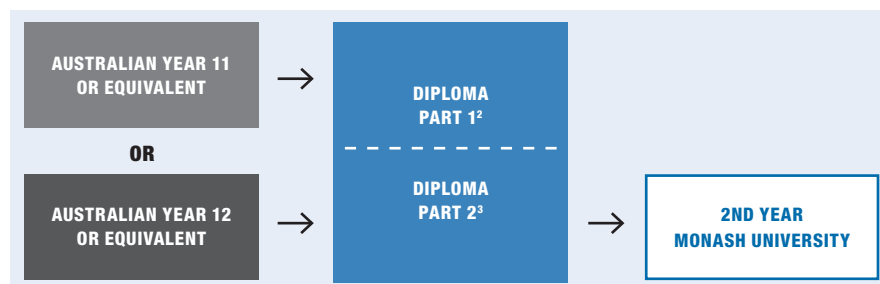
Specialise from day one with a Diploma and fast-track to second year of a Monash University undergraduate degree.

DIPLOMA²

Our Diploma program offers international students guaranteed entry into second year of their preferred Monash University undergraduate degree. All you need to do is pass all of your units and meet the set entry score and subject prerequisites.

We offer the following diplomas leading to degrees in:

- Art, Design and Architecture
- Arts
- Business and Economics
- Education (double degrees with Arts, Business and Science only)
- Engineering
- Information Technology
- Science.



Curriculum

What you study during the Diploma is directly related to what you'll study during your undergraduate degree. Part 1 will introduce you to the theories and concepts required for your part 2 studies. In part 2, you'll study the same units as first-year university students and complete equivalent assessments.

Teaching style

The style of teaching at Monash University may be different to what you're used to. As a diploma student, you'll study in a supportive college environment. You'll have access to your teachers and resources outside of class.

Lectorials

Learn about a topic by listening to your lecturer presenting the content and asking you questions. You'll be expected to interact during the session by participating in online polls and activities.

Tutorials

Apply the knowledge you've learnt in a classroom format. Your teacher will lead the discussion and ask questions. You'll work on individual projects and complete group activities.

Laboratories

Solidify your learning through practical lab classes. Science students have access to chemistry, physics and biology laboratories. We also have computer laboratories for art and design, engineering and IT students.

Assessments

Your assessments will be different depending on which diploma you study. For each unit, you'll undertake various assessments, including presentations and both group and individual assignments. Some units may also require you to sit an exam.

For a full list of assessments, download the unit guide for your chosen diploma visit the Monash University website:

monash.edu/study

Transition to Monash University

As a diploma student, you'll have opportunities to meet a representative from your future Monash University faculty and ask questions. You'll also have access to on-campus Career Advisors who can help with your decision making.

¹ The duration and intake will depend on the program and your start date.

² The Diploma is a 96-credit point course. If you have completed an Australian Year 11 with the required scores (or equivalent) you'll be eligible for entry into our Diploma and must complete 96 credit points (both Diploma part 1 and 2).

³ The Diploma is a 96-credit point course. If you have completed an Australian Year 12 with the required scores (or equivalent) you'll be eligible for entry into our Diploma and will receive 48-credit-point exemptions for part 1, reducing your course duration.

ART, DESIGN AND ARCHITECTURE

The work of artists, designers and architects is everywhere. It shapes the way we live, how we interact with our surroundings, and our visual landscape. At Monash Art, Design and Architecture, you'll thrive in a creative community that allows you to take risks and break new ground. You'll begin your journey towards a lifelong creative career that allows you to make a meaningful contribution to people's lives, locally and globally.

monash.edu/mada

Choose your Monash pathway program

We offer three pathways into Art, Design and Architecture undergraduate courses at Monash University: Foundation Year, Monash Advanced Preparation Program and Diploma. Each program offers guaranteed entry into your chosen degree, provided you meet the entry requirements and prerequisites.

	PATHWAY PROGRAM TO FIRST-YEAR UNIVERSITY ¹		PATHWAY TO SECOND-YEAR UNIVERSITY ⁴	
	FOUNDATION YEAR	MAPP	DIPLOMA PART 1	DIPLOMA PART 2
Where it leads to	First year of Monash University in: <ul style="list-style-type: none"> Architectural Design Design² Fine Art 	First year of Monash University in: <ul style="list-style-type: none"> Architectural Design Design² 	Diploma part 2	Second year of Monash University in: <ul style="list-style-type: none"> Architectural Design Design²
Double degrees	Yes, provided you meet the prerequisites of the double degrees.	Yes, provided you meet the prerequisites of the double degrees ³ .	Not applicable	No double degree options are offered as a transition pathway from Diploma of Art and Design.
Duration	10-18 months ⁴	4 months	9 months	9 months
Intakes	February and August ⁵	February, October ⁶	Architectural Design stream: June and October Design stream: February, June and October	Architectural Design stream: February and June Design stream: February, June and October
Specialisation	General university preparation.	General university preparation.	In part 1, you will study the foundational principles of art and design in the areas of drawing, art and design theory, and visual arts.	In part 2, you can choose your stream in Architectural Design and Design ² .
Units studied	Complete two English units and six electives. Choose from 13 subjects.	Four units	Complete seven core units plus one elective.	Complete seven core units.
Prerequisites⁷	English	English	English	English
Fees⁸ <small>(2026 fees p.a.)</small>	A\$42,300 (Standard)	A\$27,000	A\$35,400	A\$38,800
Global entry requirements	Foundation Year Standard: <ul style="list-style-type: none"> GCE O Levels: 16 GCE A Levels: 3 GCE AS levels – (Cambridge Examinations only): 5 International Baccalaureate IB Diploma: 24 Foundation Year Extended: <ul style="list-style-type: none"> GCE O Levels: 12 GCE A Levels: 3 GCE AS Levels: 4 International Baccalaureate IB Diploma: 24 	MAPP: <ul style="list-style-type: none"> GCE A Levels: 4 GCE AS levels: 6 International Baccalaureate (IB Diploma): 24 International Baccalaureate Diploma Program Course (IB Diploma Certificate): 22 	Diploma part 1: <ul style="list-style-type: none"> GCE O Levels: 16 GCE A Levels: 3 GCE AS levels – (Cambridge Examinations only): 5 International Baccalaureate IB Diploma: 24 Monash University Foundation Year: 50 	Diploma part 2: <ul style="list-style-type: none"> GCE A Levels: 5 GCE AS levels – (Cambridge Examinations only): 7 International Baccalaureate IB Diploma: 24 Monash University Foundation Year: 55
Explore your pathway	go.monash.edu/foundation-year	go.monash.edu/MAPP	go.monash.edu/Diploma-art_design_architecture	
CRICOS code	see page 14	see page 12	045084G	

CAREERS IN

- Advertising
- Architecture
- Art
- Art history
- Brand strategy
- Collaborative design
- Communication design
- Curation
- Experience design
- Industrial and product design
- Multimedia design
- Museum or gallery
- Property development
- Residential and commercial interior design
- Spatial design
- Sustainable design consulting
- Urban design and planning
- Web/UX, Service design

PROFESSIONAL RECOGNITION

- Our four Bachelor of Design specialisations are recognised by the Design Institute of Australia.
- The Master of Architecture is accredited by the Architects Accreditation Council of Australia (AACAA).
- Graduates of our Bachelor of Architectural Design gain automatic entry into our Master of Architecture.

¹ Entry requirements into Monash University undergraduate courses apply, refer to pages 34–39.

² Bachelor of Design includes specialisations in: Industrial Design, Communication Design, Spatial Design or Collaborative Design.

³ Excluding double degrees that include the Bachelor of Fine Art.

⁴ Depending on program and intake.

⁵ Standard program intake dates. Please see page 14 for all program intake dates.

⁶ Some Monash University undergraduate degrees are only available in the Semester 1 intake. You must commence the Monash Advanced Preparation Program in September if your undergraduate degree only has a Semester 1 starting period.

⁷ Prerequisites for both Monash Pathway Programs and for undergraduate destination degrees are located on pages 34–39. You'll need to keep this in mind when choosing your Pathway program subjects if you have not satisfied these prerequisites from your prior studies.

⁸ See page 40.

YOUR FUTURE IN ARTS

If your ambition is to explore the world of ideas, cultures and places in an environment where you'll be inspired, supported and challenged, then Monash Arts is the place to be. Flexible course structures mean you can make the most of exploring the amazing opportunities on offer, such as studying overseas, internships, field trips, double degrees, and leadership and mentoring programs – allowing you to expand your interests even further.

monash.edu/arts

Choose your Monash pathway program

We offer three pathways into Arts undergraduate courses at Monash University: Foundation Year, Monash Advanced Preparation Program, and Diploma. Each program offers guaranteed entry into your chosen degree, provided you meet the entry requirements and prerequisites.

	PATHWAY PROGRAMS TO FIRST YEAR UNIVERSITY ¹		PATHWAY TO SECOND YEAR UNIVERSITY ¹	
	FOUNDATION YEAR	MAPP	DIPLOMA PART 1	DIPLOMA PART 2
Where it leads to	First year of Monash University in: <ul style="list-style-type: none"> Arts Criminology Global Studies International Relations Media Communication Music Politics, Philosophy and Economics 	First year of Monash University in: <ul style="list-style-type: none"> Arts Criminology Global Studies International Relations Media Communication Music Politics, Philosophy and Economics 	Diploma part 2	Second year of Monash University in: <ul style="list-style-type: none"> Arts² Criminology Global Studies International Relations Media Communication² Politics, Philosophy and Economics
Double degrees	Yes, provided you meet the prerequisites of the double degrees.	Yes, provided you meet the prerequisites of the double degrees ³ .	Not applicable	Yes, provided you meet the prerequisites of the double degrees.
Duration	10-18 months ⁴	4 months	9 months	9 months
Intakes	February and August ⁵	February, October ⁶	February, June and October	February, June and October
Specialisation	General university preparation.	General university preparation.	Choose your stream: Sociology, Psychology or Media Communication.	Choose your stream: Media Communication, Psychology or Sociology.
Units studied	Complete two English and six electives. Choose from 13 subjects.	Four units	Complete seven core units and one elective.	Complete eight core units.
Prerequisites⁷	English	English	English	English
Fees⁸ (2026 fees p.a.)	A\$42,300 (Standard)	A\$27,000	A\$35,900	A\$40,000
Global entry requirements	Foundation Year Standard: <ul style="list-style-type: none"> GCE O Levels: 16 GCE A Levels: 3 GCE AS levels – (Cambridge Examinations only): 5 International Baccalaureate IB Diploma: 24 Foundation Year Extended: <ul style="list-style-type: none"> GCE O Levels: 12 GCE A Levels: 3 GCE AS levels – (Cambridge Examinations only): 4 International Baccalaureate IB Diploma: 24 	MAPP: <ul style="list-style-type: none"> GCE A Levels: 4 GCE AS levels: 6 International Baccalaureate (IB Diploma): 24 International Baccalaureate Diploma Program Course (IB Diploma Certificate): 22 	Diploma of Arts: <ul style="list-style-type: none"> GCE O Levels: 16 GCE A Levels: 3 GCE AS levels – (Cambridge Examinations only): 5 International Baccalaureate IB Diploma: 24 Monash University Foundation Year: 50 	Diploma of Arts – Sociology and Media Communication streams: <ul style="list-style-type: none"> GCE A Levels: 5 GCE AS levels – (Cambridge Examinations only): 7 International Baccalaureate IB Diploma: 24 Monash University Foundation Year: 55 Diploma of Arts – Psychology stream: <ul style="list-style-type: none"> GCE A Levels: 6 GCE AS levels – (Cambridge Examinations only): 9 International Baccalaureate IB Diploma: 25 Monash University Foundation Year: 60
Explore your pathway	go.monash.edu/foundation-year	go.monash.edu/MAPP	go.monash.edu/diploma-arts	
CRICOS code	See page 14	see page 12	061625F	

CAREERS IN

- Advocacy
- Communications
- Consulting
- Content writing
- Court systems
- Criminal justice
- Criminal profiling
- Diplomacy
- Event organising
- Foreign affairs and trade
- Government
- International relations
- Journalism
- Linguistics
- Marketing
- Media
- Music composition
- Music performance
- Music writing
- Politics
- Public affairs

1 Entry requirements into Monash University apply. Please refer to pages 34–39 for details.

2 Entry into first year, second semester of Monash University upon successful completion.

3 Excluding double degrees that include the Bachelor of Fine Art.

4 Depending on program and intake.

5 Standard program intake dates. Please see page 14 for program intake dates.

6 Some Monash University undergraduate degrees are only available in the Semester 1 intake. You must commence the Monash Advanced Preparation Program in September if your undergraduate degree only has a Semester 1 starting period.

7 Prerequisites for both Monash Pathway Programs and undergraduate destination degrees are located on pages 34–39. You'll need to keep this in mind when choosing your Pathway program subjects if you have not satisfied these prerequisites from your prior studies.

8 See page 40.

BUSINESS AND ECONOMICS

The world of business is challenging, fast-paced and constantly evolving. At Monash Business School, we'll help you specialise in the most impactful fields of business and develop a mindset that will allow you to find more creative solutions, make better decisions and lead with confidence. With a huge range of course options, pathways and co-curricular opportunities, you can tailor a degree to your interest and your future.

monash.edu/business

Choose your Monash pathway program

We offer three pathways into Business undergraduate courses at Monash University: Foundation Year, Monash Advanced Preparation Program, and Diploma. Each program offers guaranteed entry into your chosen degree, provided you meet the entry requirements and prerequisites.

	PATHWAY PROGRAMS TO FIRST-YEAR UNIVERSITY ¹		PATHWAY TO SECOND-YEAR UNIVERSITY ¹	
	FOUNDATION YEAR	MAPP	DIPLOMA PART 1	DIPLOMA PART 2
Where it leads to	First year of Monash University in: <ul style="list-style-type: none"> Accounting Actuarial Science Banking and Finance Business Business Administration Commerce Digital Business Economics Finance Marketing 	First year of Monash University in: <ul style="list-style-type: none"> Accounting Actuarial Science Banking and Finance Business Business Administration Commerce Digital Business Economics Finance Marketing 	Diploma part 2	Second year of Monash University in: <ul style="list-style-type: none"> Accounting Actuarial Science Banking and Finance Business Business Administration Commerce Digital Business Economics Finance Marketing
Double degrees	Yes, provided you meet the prerequisites of the double degrees.	Yes, provided you meet the prerequisites of the double degrees.	Not applicable	Yes, provided you meet the prerequisites of the double degrees.
Duration	10-18 months ²	4 months	9 months	9 months
Intakes	February and August ³	February, October ⁴	February, June and October	February, June and October
Specialisation	General university preparation.	General university preparation.	Choose your stream: Business or Commerce.	Choose your stream: Business or Commerce.
Units studied	Complete two English units and six electives. Choose from 13 subjects.	Four units	Complete seven core units and one elective.	Complete six core units and two electives.
Prerequisites⁵	English	English	English	English and Mathematics
Fees⁶ (2026 fees p.a.)	A\$42,300 (Standard)	A\$27,000	A\$41,700	A\$46,000
Global entry requirements	Foundation Year Standard: <ul style="list-style-type: none"> GCE O Levels: 16 GCE A Levels: 3 GCE AS levels – (Cambridge Examinations only): 5 International Baccalaureate IB Diploma: 24 Foundation Year Extended: <ul style="list-style-type: none"> GCE O Levels: 12 GCE A Levels: 3 GCE AS levels – (Cambridge Examinations only): 4 International Baccalaureate IB Diploma: 24 	MAPP: <ul style="list-style-type: none"> GCE A Levels: 4 GCE AS levels: 6 International Baccalaureate (IB Diploma): 24 International Baccalaureate Diploma Program Course (IB Diploma Certificate): 22 	Diploma of Business – Business stream: <ul style="list-style-type: none"> GCE O Levels: 16 GCE A Levels: 3 GCE AS levels – (Cambridge Examinations only): 5 International Baccalaureate IB Diploma: 24 Monash University Foundation Year: 50 Diploma of Business – Commerce stream: <ul style="list-style-type: none"> GCE O Levels: 16 GCE A Levels: 3 GCE AS levels – (Cambridge Examinations only): 5 International Baccalaureate IB Diploma: 24 Monash University Foundation Year: 50 	Diploma of Business – Business stream: <ul style="list-style-type: none"> GCE A Levels: 6 GCE AS levels – (Cambridge Examinations only): 9 International Baccalaureate IB Diploma: 25 Monash University Foundation Year: 60 Diploma of Business – Commerce stream: <ul style="list-style-type: none"> GCE A Levels: 6 GCE AS levels – (Cambridge Examinations only): 9 International Baccalaureate IB Diploma: 25 Monash University Foundation Year: 60
Explore your pathway	go.monash.edu/foundation-year	go.monash.edu/MAPP	go.monash.edu/Diploma-buseco	
CRICOS code	See page 14	See page 12	043633M	

CAREERS IN

- Accounting
- Actuarial and data analysis
- Banking
- Business analytics
- Economics
- Finance
- Human resources
- International business
- Management
- Marketing
- Taxation

¹ Entry requirements into Monash University apply. Please refer to pages 34-39 for details.

² Depending on program and intake.

³ Standard program intake dates. Please see page 14 for program intake dates.

⁴ Some Monash University undergraduate degrees are only available in the Semester 1 intake. You must commence the Monash Advanced Preparation Program in September if your undergraduate degree only has a Semester 1 starting period.

⁵ Prerequisites for both Monash Pathway Programs and undergraduate destination degrees are located on pages 34-39. You'll need to keep this in mind when choosing your Pathway program subjects if you have not satisfied these prerequisites from your prior studies.

⁶ See page 40.

YOUR FUTURE IN EDUCATION

The world needs teachers and educators with knowledge, passion, ideas and commitment. At Monash, you'll join a community that believes education can change lives. You'll explore education theory and practice, and how to best teach different ages, abilities and needs. You'll help every learner open doors to new ideas, possibilities and skills.

monash.edu/education

Choose your Monash pathway program

We offer three pathways into Education undergraduate courses at Monash University: Foundation Year, Monash Advanced Preparation Program, and Diploma. Each program offers guaranteed entry into your chosen degree, provided you meet the entry requirements and prerequisites.

	PATHWAY PROGRAMS TO FIRST-YEAR UNIVERSITY ¹		PATHWAY TO SECOND-YEAR UNIVERSITY ¹	
	FOUNDATION YEAR	MAPP	DIPLOMA PART 1 ²	DIPLOMA PART 2
Where it leads to	First year of Monash University in: <ul style="list-style-type: none"> Education (Honours), all specialisations* Learning Design and Technology <p>* All applicants must sit for the Situational Judgement test.</p>	First year of Monash University in: <ul style="list-style-type: none"> Education (Honours), all specialisations* Learning Design and Technology <p>* All applicants must sit for the Situational Judgement test.</p>	Diploma part 2	Second year of Monash University in: <ul style="list-style-type: none"> Education (Honours) and Arts Education (Honours) and Business Education (Honours) and Science <p>Note: Only primary and secondary specialisations available. All applicants must sit for the Casper test.</p>
Double degrees	Yes, provided you meet the prerequisites of the double degrees.	Yes, provided you meet the prerequisites of the double degrees ³ .	Not applicable	Double degrees only available with Arts, Business or Science.
Duration	10-18 months ⁴	4 months	9 months	9 months
Intakes	February and August ⁵	February, October ⁶	February, June and October	February, June and October
Specialisation	General university preparation.	General university preparation.	In Part 1, you can choose your stream in Arts, Business or Science.	Add the Education stream to your Arts, Business or Science diploma.
Units studied	Complete two English units and six electives. Choose from 13 subjects.	Four units	Complete same units as Arts, Business and Science.	Complete six core units from your primary diploma and two Education units. You'll also complete 10 days of professional work placement during the diploma.
Prerequisites⁷	English	English	English (Mathematics also required for Arts stream)	Arts: English and Mathematics Business: English and Mathematics Science: English, Mathematics and one of Biology, Chemistry, Environment Science, Geography, Physics or Psychology
Fees⁸ <small>(2026 fees p.a.)</small>	A\$42,300 (Standard)	A\$27,000	A\$35,900 – A\$41,700	A\$40,000–A\$46,000
Global entry requirements	Foundation Year Standard: <ul style="list-style-type: none"> GCE O Levels: 16 GCE A Levels: 3 GCE AS Levels – (Cambridge Examination only): 5 International Baccalaureate IB Diploma: 24 Foundation Year Extended: <ul style="list-style-type: none"> GCE O Levels: 12 GCE A Levels: 3 GCE AS Levels – (Cambridge Examination only): 4 International Baccalaureate IB Diploma: 24 	MAPP: <ul style="list-style-type: none"> GCE A Levels: 4 GCE AS levels: 6 International Baccalaureate (IB Diploma): 24 International Baccalaureate Diploma Program Course (IB Diploma Certificate): 22 	Arts, Business, Science <ul style="list-style-type: none"> GCE O Levels: 16 GCE A Levels: 3 GCE AS Levels – (Cambridge Examination only): 5 IB Diploma: 24 	Arts – Sociology <ul style="list-style-type: none"> GCE A Levels: 5 GCE AS levels – (Cambridge Examinations only): 7 IB Diploma: 24 Monash University FY: 55 Arts – Psychology <ul style="list-style-type: none"> GCE A Levels: 6 GCE AS levels – (Cambridge Examinations only): 9 IB Diploma: 25 Monash University FY: 60 Business <ul style="list-style-type: none"> GCE A Levels: 6 GCE AS levels – (Cambridge Examinations only): 9 IB Diploma: 25 Monash University FY: 60 Science <ul style="list-style-type: none"> GCE A Levels: 5 GCE AS levels – (Cambridge Examinations only): 7 IB Diploma: 24 Monash University FY: 55
Explore your pathway	go.monash.edu/foundation-year	go.monash.edu/MAPP	go.monash.edu/dip-education-studies	
CRICOS code	See page 14	see page 12	Arts: 061625F Business: 043633M Science: 086068B	

CAREERS IN

- Community arts
- Education services and management
- Government
- Primary school teaching
- Publishing
- Secondary school teaching
- Youth and community education

You now have an option to undertake MTeST – a non-academic skills to identify your suitability for the teaching profession. Please see monash.edu/education-mtest

- 1 Entry requirements into Monash University apply. Please refer to pages 34–39 for details.
- 2 Eligibility will be assessed for entry into Diploma part 1 in Arts, Business or Science according to your chosen Monash University undergraduate destination degree.
- 3 Excluding double degrees that include the Bachelor of Fine Art.
- 4 Depending on program and intake.
- 5 Standard program intake dates. Please see page 14 for program intake dates.
- 6 Some Monash University undergraduate degrees are only available in the Semester 1 intake. You must commence the Monash Advanced Preparation Program in September if your undergraduate degree only has a Semester 1 starting period.
- 7 Prerequisites for both Monash Pathway Programs and undergraduate destination degrees are located on pages 34–39. You'll need to keep this in mind when choosing your Pathway program subjects if you have not satisfied these prerequisites from your prior studies.
- 8 See page 40.

ENGINEERING

Great engineers are so much more than just their skills – they're planners, leaders, team players and communications. As an engineer, you'll develop solutions for global challenges, advancing sustainable technologies and innovations to save lives and benefit society. At Monash Engineering, our courses produce highly skilled engineering who are ready for life, work and the world.

monash.edu/engineering

Choose your Monash pathway program

We offer three pathways into an Engineering undergraduate course at Monash University: Foundation Year, Monash Advanced Preparation Program and Diploma. Each program offers guaranteed entry into your chosen degree, provided you meet the entry requirements and prerequisites.

	PATHWAY PROGRAM TO FIRST-YEAR UNIVERSITY ¹		PATHWAY TO SECOND-YEAR UNIVERSITY ¹	
	FOUNDATION YEAR	MAPP	DIPLOMA PART 1	DIPLOMA PART 2
Where it leads to	First year of Monash University in: <ul style="list-style-type: none"> Engineering (Honours) 	First year of Monash University in: <ul style="list-style-type: none"> Engineering (Honours) 	Diploma part 2	Second year of Monash University in: <ul style="list-style-type: none"> Engineering (Honours)
Double degrees	Yes, provided you meet the prerequisites of the double degrees.	Yes, provided you meet the prerequisites of the double degrees.	Not applicable	Yes, provided you meet the prerequisites of the double degrees.
Duration	10-18 months ²	4 months	9 months	12 months
Intakes	February and August ³	February, October ⁴	February, June and October	February, June and October
Specialisation	General university preparation.	General university preparation.	General university preparation.	Engineering-focused.
Units studied	Complete two English units and six electives. Choose from 13 subjects.	Four units	Complete eight core units.	Complete eight core units.
Prerequisites⁵	English	English	English	English, Mathematics, and one of Chemistry or Physics (other conditions apply).
Fees⁶ (2026 fees p.a.)	A\$42,300 (Standard)	A\$27,000	A\$39,100	A\$44,500
Global entry requirements	Foundation Year Standard: <ul style="list-style-type: none"> GCE O Levels: 16 GCE A Levels: 3 GCE AS Levels – (Cambridge Examination only): 5 International Baccalaureate IB Diploma: 24 Foundation Year Extended: <ul style="list-style-type: none"> GCE O Levels: 12 GCE A Levels: 3 GCE AS Levels – (Cambridge Examination only): 4 International Baccalaureate IB Diploma: 24 	MAPP: <ul style="list-style-type: none"> GCE A Levels: 4 GCE AS levels: 6 International Baccalaureate (IB Diploma): 24 International Baccalaureate Diploma Program Course (IB Diploma Certificate): 22 	Diploma of Engineering: <ul style="list-style-type: none"> GCE O Levels: 16 GCE A Levels: 3 GCE AS Levels – (Cambridge Examination only): 5 International Baccalaureate IB Diploma: 24 Monash University Foundation Year: 50 	Diploma of Engineering: <ul style="list-style-type: none"> GCE A Levels: 6 GCE AS Levels – (Cambridge Examination only): 9 International Baccalaureate IB Diploma: 25 Monash University Foundation Year: 60
Explore your pathway	go.monash.edu/foundation-year	go.monash.edu/MAPP	go.monash.edu/diploma-engineering	
CRICOS code	See page 164	See page 12	043634K	

CAREERS IN

- Aerospace engineering
- Biomedical engineering
- Chemical engineering
- Civil engineering
- Consulting
- Design and manufacturing
- Electrical engineering
- Environmental management
- Materials engineering
- Mechanical engineering
- Research and development
- Robotics and mechatronics engineering
- Software engineering

¹ Entry requirements into Monash University apply. Please refer to pages 34–39 for details.

² Depending on program and intake.

³ Standard program intake dates. Please see page 14 for program intake dates.

⁴ Some Monash University undergraduate degrees are only available in the Semester 1 intake. You must commence the Monash Advanced Preparation Program in September if your undergraduate degree only has a Semester 1 starting period.

⁵ Prerequisites for both Monash Pathway Programs and undergraduate destination degrees are located on pages 34–39. You'll need to keep this in mind when choosing your Pathway program subjects if you have not satisfied these prerequisites from your prior studies.

⁶ See page 40.

INFORMATION TECHNOLOGY

Information technology (IT) is fast-paced and ever-changing. More than ever, people and organisations are seeing opportunities to leverage IT, and as an IT professional you'll be a vital part of this transformation. At Monash, we're in the business of discovering how IT can help meet the key global challenges of the 21st century.

monash.edu/it

Choose your Monash pathway program

We offer three pathways into Information Technology undergraduate courses at Monash University: Foundation Year, Monash Advanced Preparation Program and Diploma. Each program offers guaranteed entry into your chosen degree, provided you meet the entry requirements and prerequisites.

	PATHWAY PROGRAM TO FIRST-YEAR UNIVERSITY ¹		PATHWAY TO SECOND-YEAR UNIVERSITY ¹	
	FOUNDATION YEAR	MAPP	DIPLOMA PART 1	DIPLOMA PART 2
Where it leads to	First year of Monash University in: <ul style="list-style-type: none"> Computer Science Information Technology 	First year of Monash University in: <ul style="list-style-type: none"> Computer Science Information Technology 	Diploma part 2	Second year of Monash University in: <ul style="list-style-type: none"> Computer Science Information Technology
Double degrees	Yes, provided you meet the prerequisites of the double degrees.	Yes, provided you meet the prerequisites of the double degrees.	Not applicable	Yes, provided you meet the prerequisites of the double degrees.
Duration	10-18 months ²	4 months	9 months	9 months
Intakes	February and August ³	February, October ⁴	February, June and October	February, June and October
Specialisation	General university preparation.	General university preparation.	General university preparation.	IT-focussed
Units studied	Complete two English units and six electives. Choose from 13 subjects.	Four units	Complete six core units and two electives.	CS: Complete seven core units and one elective. IT: Complete six core units and two electives.
Prerequisites⁵	English	English	English	English and Mathematics
Fees⁶ (2026 fees p.a.)	A\$42,300 (Standard)	A\$27,000	A\$38,500	A\$44,000
Global entry requirements	Foundation Year Standard: <ul style="list-style-type: none"> GCE O Levels: 16 GCE A Levels: 3 GCE AS Levels – (Cambridge Examination only): 5 International Baccalaureate IB Diploma: 24 Foundation Year Extended: <ul style="list-style-type: none"> GCE O Levels: 12 GCE A Levels: 3 GCE AS Levels – (Cambridge Examination only): 4 International Baccalaureate IB Diploma: 24 	MAPP: <ul style="list-style-type: none"> GCE A Levels: 4 GCE AS levels: 6 International Baccalaureate (IB Diploma): 24 International Baccalaureate Diploma Program Course (IB Diploma Certificate): 22 	Diploma of IT: <ul style="list-style-type: none"> GCE O Levels: 16 GCE A Levels: 3 GCE AS Levels – (Cambridge Examination only): 5 International Baccalaureate IB Diploma: 24 Monash University Foundation Year: 50 	Diploma of IT: <ul style="list-style-type: none"> GCE A Levels: 5 GCE AS Levels – (Cambridge Examination only): 7 International Baccalaureate IB Diploma: 24 Monash University Foundation Year: 55
Explore your pathway	go.monash.edu/foundation-year	go.monash.edu/MAPP	go.monash.edu/diploma-IT	
CRICOS code	See page 14	See page 12	0100159	

CAREERS IN

- Artificial Intelligence
- Business information systems
- Computer games and multimedia
- Cybersecurity
- Data science
- Games designer development
- IT consulting
- IT forensics
- Networks and security
- Project management
- Software development
- Specialist programming
- Technical analyst

¹ Entry requirements into Monash University apply. Please refer to pages 34–39 for details.

² Depending on program and intake.

³ Standard program intake dates. Please see page 14 for program intake dates.

⁴ Some Monash University undergraduate degrees are only available in the Semester 1 intake. You must commence the Monash Advanced Preparation Program in September if your undergraduate degree only has a Semester 1 starting period.

⁵ Prerequisites for both Monash Pathway Programs and undergraduate destination degrees are located on pages 34–39. You'll need to keep this in mind when choosing your Pathway program subjects if you have not satisfied these prerequisites from your prior studies.

⁶ See page 40.

A Monash law degree offers you a practical way to make a real difference in the world. Ranked in the top 40 law schools in the world¹, we're one of the largest and most prestigious law schools in Australia.

We guarantee our students a place in the clinical legal education program to build their knowledge, experience, and confidence. This guarantee is for all students who wish to incorporate a practical component credited towards their Monash law degree. We are the first law school in Australia to offer a guarantee like this for our students. This reflects our belief in the transformative effect of experiential education.

monash.edu/law

Your Monash pathway programs

Both the Foundation Year and Monash Advanced Preparation programs offer guaranteed pathways into a law undergraduate course at Monash University. If you satisfy the entry requirements and prerequisites, your place is secured.

	PATHWAY PROGRAMS TO FIRST-YEAR UNIVERSITY ²	
	FOUNDATION YEAR	MAPP
Where it leads to	First year of Monash University in: <ul style="list-style-type: none"> Laws (Honours) 	First year of Monash University in: <ul style="list-style-type: none"> Laws (Honours)
Double degrees	Yes, provided you meet the prerequisites of the double degrees.	Yes, provided you meet the prerequisites of the double degrees.
Duration	10-18 months ³	4 months
Intakes	February and August ⁴	February, October ⁵
Specialisation	General university preparation.	General university preparation.
Units studied	Complete two English units and six electives. Choose from 13 subjects.	Four units
Prerequisites⁶	English	English
Fees⁷ (2025 fees p.a.)	A\$38,400 (standard)	A\$27,000
Global entry requirements	Foundation Year Standard: <ul style="list-style-type: none"> GCE O Levels: 16 GCE A Levels: 3 GCE AS Levels – (Cambridge Examination only): 5 International Baccalaureate IB Diploma: 24 Foundation Year Extended: <ul style="list-style-type: none"> GCE O Levels: 12 GCE A Levels: 3 GCE AS Levels – (Cambridge Examination only): 4 International Baccalaureate IB Diploma: 24 	MAPP: <ul style="list-style-type: none"> GCE A Levels: 4 GCE AS levels: 6 International Baccalaureate (IB Diploma): 24 International Baccalaureate Diploma Program Course (IB Diploma Certificate): 22
Explore your pathway	go.monash.edu/foundation-year	go.monash.edu/MAPP
CRICOS code	See page 14	See page 12

CAREERS IN

- Business management and consultancy
- Environmental protection and advocacy
- Finance and banking
- In-house legal counsel
- International aid and development
- International organisations, including the United Nations
- National and international law firms
- Non-government, non-profit organisations, including the Red Cross
- Start-ups and entrepreneurs.

BEST PREPARATION FOR SUCCESS

A Monash law degree is highly regarded around the world. To provide you with the best preparation for success in your future degree, you'll have access to:

- the option to complete up to two bonus units to help boost your final Foundation Year score
- a wide range of humanities, business and science subjects to provide you with the prerequisites for double degrees across disciplines
- the 'At Monash Seminar Series', where you'll visit the faculty and learn more about the opportunities available with Monash Law.

1 QS World University Rankings by Subject, 2025.

2 Entry requirements into Monash University apply. Please refer to pages 34–39 for details.

3 Depending on program and intake.

4 Standard program intake dates. Please see page 14 for program intake dates.

5 Some Monash University undergraduate degrees are only available in the Semester 1 intake. You must commence the Monash Advanced Preparation Program in September if your undergraduate degree only has a Semester 1 starting period.

6 Prerequisites for both Monash Pathway Programs and undergraduate destination degrees are located on pages 34–39. You'll need to keep this in mind when choosing your Pathway program subjects if you have not satisfied these prerequisites from your prior studies.

7 See page 40.

MEDICINE, NURSING AND HEALTH SCIENCES

Monash Medicine, Nursing and Health Sciences is a leading provider of education for doctors, nurses and Allied Health¹ professionals in Australia. All our courses are specialist degrees, so you'll get to focus on your chosen area of study from day one.

You'll study alongside students from more than 90 countries, and access all areas of health. Whichever course you choose, you'll have the satisfaction of helping build a healthier world.

monash.edu/medicine

Your Monash pathway programs

Both the Foundation Year and Monash Advanced Preparation programs offer guaranteed pathways into Medicine, Nursing and Health Sciences undergraduate courses at Monash University. All you need to do is satisfy the entry requirements and prerequisites. For courses with a limited number of places, the entry score listed is indicative.

PATHWAY PROGRAMS TO FIRST-YEAR UNIVERSITY ²		
	FOUNDATION YEAR	MAPP
Where it leads to	First year of Monash University in: <ul style="list-style-type: none"> • Biomedical Science • Health Science • Medical Science and Doctor of Medicine • Nursing • Nursing and Midwifery (Honours) • Nutrition Science • Occupational Therapy (Honours) • Paramedicine • Physiotherapy (Honours) • Psychology • Public Health • Radiography and Medical Imaging (Honours) • Speech Pathology (Honours) 	First year of Monash University in: <ul style="list-style-type: none"> • Biomedical Science • Health Science • Nutrition Science • Psychology • Public Health
Double degrees	Yes, provided you meet the prerequisites of the double degrees.	Yes, provided you meet the prerequisites of the double degrees.
Duration	10-18 months ³	4 months
Intakes	February and August ⁴	February, October ⁵
Specialisation	General university preparation.	General university preparation.
Units studied	Complete two English units and six electives. We recommend you also study a unit sequence in Biology.	Four units
Prerequisites⁶	English	English
Fees⁷ (2025 fees p.a.)	A\$38,400 (Standard)	A\$27,000
Global entry requirements	Foundation Year Standard: <ul style="list-style-type: none"> • GCE O Levels: 16 • GCE A Levels: 3 • GCE AS Levels – (Cambridge Examination only): 5 • International Baccalaureate IB Diploma: 24 Foundation Year Extended: <ul style="list-style-type: none"> • GCE O Levels: 12 • GCE A Levels: 3 • GCE AS Levels – (Cambridge Examination only): 4 • International Baccalaureate IB Diploma: 24 	MAPP: <ul style="list-style-type: none"> • GCE A Levels: 4 • GCE AS levels: 6 • International Baccalaureate (IB Diploma): 24 • International Baccalaureate Diploma Program Course (IB Diploma Certificate): 22
Explore your pathway	go.monash.edu/foundation-year	go.monash.edu/MAPP
CRICOS code	See page 14	See page 12

CAREERS IN

- Allied health professions – dietetics, occupational therapy, paramedicine, physiotherapy, psychology, radiography and social work
- Biomedical research
- Government and non-government organisations
- Health and community services
- Health promotion and policy
- Medicine
- Midwifery
- Nursing

BEST PREPARATION FOR SUCCESS

Medicine, Nursing and Health Sciences degrees at Monash are in high demand and have limited places. To provide you with the best preparation for success in your future course, you'll have access to:

- eleven dedicated science laboratories, designed by Monash
- a wide variety of subjects to ensure you meet the subject prerequisites for your degree of choice
- the option to complete up to two bonus units to help boost your final Foundation Year score
- additional support in chemistry and mathematics to help you achieve the score you need
- tours of the Clayton and Peninsula campuses to see the faculty's facilities and meet teaching staff and students
- faculty representatives and on-campus career advisors who can provide one-on-one advice about the courses available.

¹ Victoria's largest public health provider.

² Entry requirements into Monash University apply. Please refer to pages 34–39 for details.

³ Depending on program and intake.

⁴ Standard program intake dates. Please see page 14 for program intake dates.

⁵ Some Monash University undergraduate degrees are only available in the Semester 1 intake. You must commence the Monash Advanced Preparation Program in September if your undergraduate degree only has a Semester 1 starting period.

⁶ Prerequisites for both Monash Pathway Programs and undergraduate destination degrees are located on pages 34–39. You'll need to keep this in mind when choosing your Pathway program subjects if you have not satisfied these prerequisites from your prior studies.

⁷ See page 40.

PHARMACY AND PHARMACEUTICAL SCIENCES

As the global population grows and ages, and as medicines become more complex, the need for pharmacists and pharmaceutical scientists increases. They play a vital role in improving the health of our communities. Whether your interest is in inventing, developing and researching new medicines, or in helping patients get the best out of their medicines, you'll have the opportunity to learn from internationally renowned scientists and educators.

monash.edu/pharmacy

Your Monash pathway program

Both the Foundation Year and Monash Advanced Preparation programs offer guaranteed pathways into a Pharmacy or Pharmaceutical Sciences undergraduate course at Monash University. If you satisfy the entry requirements and prerequisites, your place is secured.

#4 PHARMACY AND PHARMACOLOGY¹

PATHWAY PROGRAMS TO FIRST-YEAR UNIVERSITY²

	FOUNDATION YEAR	MAPP
Where it leads to	First year of Monash University in: <ul style="list-style-type: none"> Pharmacy (Honours) Pharmaceutical Science Pharmacy (Honours) and Master of Pharmacy Pharmaceutical Science Advanced (Honours) 	First year of Monash University in: <ul style="list-style-type: none"> Pharmacy (Honours) Pharmaceutical Science Pharmacy (Honours) and Master of Pharmacy Pharmaceutical Science Advanced (Honours)
Double degrees	Yes, provided you meet the prerequisites of the double degrees.	Yes, provided you meet the prerequisites of the double degrees.
Duration	10-18 months ³	4 months
Intakes	February and August ⁴	February, October ⁵
Specialisation	General university preparation.	General university preparation.
Units studied	Complete two English and six electives. Choose from 13 subjects ⁶ .	Four units
Prerequisites⁷	English	English
Fees⁸ (2026 fees p.a.)	A\$38,400 (Standard)	A\$27,000
Global entry requirements	Foundation Year Standard: <ul style="list-style-type: none"> GCE O Levels: 16 GCE A Levels: 3 GCE AS Levels – (Cambridge Examination only): 5 International Baccalaureate IB Diploma: 24 Foundation Year Extended: <ul style="list-style-type: none"> GCE O Levels: 12 GCE A Levels: 3 GCE AS Levels – (Cambridge Examination only): 4 International Baccalaureate IB Diploma: 24 	MAPP: <ul style="list-style-type: none"> GCE A Levels: 4 GCE AS levels: 6 International Baccalaureate (IB Diploma): 24 International Baccalaureate Diploma Program Course (IB Diploma Certificate): 22
Explore your pathway	go.monash.edu/foundation-year	go.monash.edu/MAPP
CRICOS code	See page 14	See page 12

CAREERS IN

- Drug development
- Food technology
- Formulation science
- Formulation technology
- Hospitals
- Pharmacies
- Regulatory bodies

BEST PREPARATION FOR SUCCESS

Pharmacy and Pharmaceutical Sciences courses at Monash are in high demand and have limited places. To provide you with the best preparation for success in your future degree course, you'll have access to:

- eleven dedicated science laboratories that are designed by Monash
- additional Mathematics and Chemistry support to help you achieve the score you need to meet the prerequisites
- the option to complete up to two bonus units to help boost your final Foundation Year score
- a presentation from the faculty about the course, prerequisites and opportunities to enhance your current student experience.



DID YOU KNOW?

The average grade for Foundation Year students in their first year of Pharmacy is a distinction.

¹ QS World University Rankings by Subject, 2025.

² Entry requirements into Monash University apply. Please refer to pages 34–39 for details.

³ Depending on program and intake.

⁴ Standard program intake dates. Please see page 14 for program intake dates.

⁵ Some Monash University undergraduate degrees are only available in the Semester 1 intake. You must commence the Monash Advanced Preparation Program in September if your undergraduate degree only has a Semester 1 starting period.

⁶ Bonus points for Pharmacy Faculty courses: Students who successfully complete MUFY Biology (unit 1 and 2) with a score (65%) average or above, will be awarded an additional two points to count towards their final total MUFY score. This process does not apply to other Monash undergraduate courses.

⁷ Prerequisites for both Monash Pathway Programs and undergraduate destination degrees are located on pages 34–39. You'll need to keep this in mind when choosing your Pathway program subjects if you have not satisfied these prerequisites from your prior studies.

⁸ See page 40.

YOUR FUTURE IN SCIENCE

We're facing a wide range of complex challenges – environmental pressure, climate change, booming population and an ever-changing technological, economic and social landscape. Your time at Monash will be filled with lab work, field trips and industry placements. You could find yourself on a field trip searching for fossils in Antarctica, or developing a new life-saving vaccine – the possibilities are endless. With a Monash Science degree, you have the freedom to explore ideas that spark innovation and drive real-world change.

monash.edu/science

Choose your Monash pathway program

We offer three pathways into Science undergraduate courses at Monash University: Foundation Year, Monash Advanced Preparation Program and Diploma. Each program offers guaranteed entry into your chosen degree, provided you meet the entry requirements and prerequisites.

	PATHWAY PROGRAM TO FIRST-YEAR UNIVERSITY ¹		PATHWAY TO SECOND-YEAR UNIVERSITY ¹	
	FOUNDATION YEAR	MAPP	DIPLOMA PART 1	DIPLOMA PART 2
Where it leads to	First year of Monash University in: <ul style="list-style-type: none"> Applied Data Science Applied Data Science Advanced (Honours) Science Science Advanced – Global Challenges (Honours) Science Advanced – Research (Honours) 	First year of Monash University in: <ul style="list-style-type: none"> Applied Data Science Applied Data Science Advanced (Honours) Science Science Advanced – Research (Honours) 	Diploma part 2	Second year of Monash University in: <ul style="list-style-type: none"> Science
Double degrees	Yes, provided you meet the prerequisites of the double degrees.	Yes, provided you meet the prerequisites of the double degrees.	Not applicable	Select double degrees, provided you meet the prerequisites of the double degrees.
Duration	10-18 months ²	4 months	9 months	9 months
Intakes	February and August ³	February, October ⁴	February, June and October	February, June and October
Specialisation	General university preparation.	General university preparation.	General university preparation.	Science-focused.
Units studied	Complete two English units and six electives. Choose from 13 subjects.	Four units	Complete eight core units.	Complete six core units and two electives.
Prerequisites⁵	English	English	English	English and one of Biology, Chemistry, Environmental Science, Geography, Mathematics, Physics or Psychology
Fees⁶ <small>(2026 fees p.a.)</small>	A\$42,300 (Standard)	A\$27,000	A\$37,800	A\$43,300
Global entry requirements	Foundation Year Standard: <ul style="list-style-type: none"> GCE O Levels: 16 GCE A Levels: 3 GCE AS Levels – (Cambridge Examination only): 5 International Baccalaureate IB Diploma: 24 Foundation Year Extended: <ul style="list-style-type: none"> GCE O Levels: 12 GCE A Levels: 3 GCE AS Levels – (Cambridge Examination only): 4 International Baccalaureate IB Diploma: 24 	MAPP: <ul style="list-style-type: none"> GCE A Levels: 4 GCE AS Levels: 6 International Baccalaureate (IB Diploma): 24 International Baccalaureate Diploma Program Course (IB Diploma Certificate): 22 	Diploma of Science: <ul style="list-style-type: none"> GCE O Levels: 16 GCE A Levels: 3 GCE AS Levels – (Cambridge Examination only): 5 International Baccalaureate IB Diploma: 24 Monash University Foundation Year: 50 	Diploma of Science: <ul style="list-style-type: none"> GCE A Levels: 5 GCE AS Levels – (Cambridge Examination only): 7 International Baccalaureate IB Diploma: 24 Monash University Foundation Year: 55
Explore your pathway	go.monash.edu/foundation-year	go.monash.edu/MAPP	go.monash.edu/diploma-science	
CRICOS code	See page 14	See page 12	086068B	

CAREERS IN

- Atmospheric science
- Biochemistry
- Consultancy
- Data science
- Food technology
- Genetics
- Industrial chemistry
- Meteorology
- Microbiology
- Physics
- Science education
- Wine making

1 Entry requirements into Monash University apply. Please refer to pages 34–39 for details.

2 Depending on program and intake.

3 Standard program intake dates. Please see page 14 for program intake dates.

4 Some Monash University undergraduate degrees are only available in the Semester 1 intake. You must commence the Monash Advanced Preparation Program in September if your undergraduate degree only has a Semester 1 starting period.

5 Prerequisites for both Monash Pathway Programs and undergraduate destination degrees are located on page 30. You'll need to keep this in mind when choosing your Pathway program or Diploma subjects if you have not satisfied these prerequisites from your prior studies.

6 See page 40.

ENGLISH LANGUAGE

Studying English at Monash College will give you the best preparation for success in your Monash Pathway Program and University studies.

monashcollege.edu.au/english



MONASH ENGLISH

Monash English is our core English language pathway for you to meet the English requirements for our Pathway Programs and your Monash undergraduate, graduate or graduate research course. You'll complete your language program ready to study with confidence and see yourself as a citizen of a larger community.

Why study Monash English?

- Meet the English language requirements of your career path and perform equally to other international direct-entry students.
- Stay on track and excel with the help of real time assessments, and feedback on progress and performance to make sure you succeed.
- Complete discipline-specific learning activities aligned to your future career path.
- Develop both inter-cultural and cultural competence to effectively communicate with people across cultures.
- Have the opportunity to develop friendships and belonging through community-based activities.
- To communicate with people from diverse backgrounds.

Course content

As a Monash English student, you'll:

- Develop your proficiency in reading, writing, listening and speaking
- Extend your range and use of academic vocabulary
- Apply a range of skills needed to understand complex reading and listening texts
- Speak clearly and confidently in a range of contexts
- Learn to listen and understand a range of English accents
- Understand the particular way of communicating in your own culture and other cultures and the misunderstandings that may occur
- Express ideas in writing following Australian academic conventions
- Learn to communicate effectively in social conversations, academic discussions and presentations
- Improve your grammar and pronunciation
- Understand, apply and explain theories in your discipline area
- Learn how to respond to feedback
- Become a self-directed learner
- Develop confidence in the use of artificial intelligence for learning.

MONASH ENGLISH PATHWAY



When I initially started at the Monash English course I thought it would be entirely about language, but I found it to be much more than that. I learnt about cultural nuances, and research skills that were essential to my master's degree. Now I am applying all of these theories and experiences in my working environment. For students coming to Australia who haven't been exposed to the university environment, I highly recommend taking a Monash College pathway. It offers an amazing introduction and preparation for university life."

AHMAD MAYAR (AFGHANISTAN)

Senior Project Manager at Monash University

The number of modules you complete will depend on your destination course and your current level of English. For instance if you are interested in joining the Foundation Year (Standard) and your IELTS score (or equivalent) is 4.5 you will need to complete Modules 1 and 2¹.

ENGLISH FOR FOUNDATION YEAR (FY)

	DESTINATION COURSE	
	FY Extended	FY Standard
IELTS 6.5		
IELTS 6.0		
IELTS 5.5		
IELTS 5.0		Module 2
IELTS 4.5	Module 1	Module 1

ENGLISH FOR MONASH ADVANCED PREPARATION PROGRAM (MAPP)

	DESTINATION COURSE
	MAPP
IELTS 6.0	
IELTS 5.5	Module 3
IELTS 5.0	Module 2
IELTS 4.5	Module 1

ENGLISH FOR DIPLOMAS

	DESTINATION COURSE	
	Diploma part 1	Diploma part 2
IELTS 6.5		
IELTS 6.0		
IELTS 5.5		Module 3
IELTS 5.0	Module 2	Module 2
IELTS 4.5	Module 1	Module 1

ENGLISH FOR MONASH UNIVERSITY

	DESTINATION COURSE		
	University 6.5	University 7.0	University 7.5
IELTS 7.5			
IELTS 7.0			Module 4
IELTS 6.5		Module 4	Module 3
IELTS 6.0	Module 4	Module 3	Module 2
IELTS 5.5	Module 3	Module 2	Module 1
IELTS 5.0	Module 2	Module 1	
IELTS 4.5	Module 1		



Docklands



10–40 weeks



Modules are aligned to destination programs



20-plus hours
15 hours of extra study

Entry requirements

IELTS (or equivalent) or the Duolingo English Test

Transition requirements

Successful completion of required Monash English level (see page 30)



A\$6800 per 10-week module
(2026 fees p.a.)
Subject to change.

Program ownership

Monash English is owned and delivered by Monash College Pty Ltd, CRICOS Provider Code 01857J.
CRICOS course code: 076753G

¹ Applicants must achieve the required overall score, with no individual band more than 0.5 below that score. If any band falls below this threshold, students will be placed in the module below.

MONASH PATHWAY PROGRAM ENTRY REQUIREMENTS

To apply for one of our Monash Pathway Programs, you must satisfy all of the following requirements:

1 MINIMUM AGE REQUIREMENTS

You must meet the minimum age requirements at the time of enrolment as follows:

- **Foundation and Diploma part 1:** At least 16 years of age.
- **Diploma part 2:** At least 16 years and 6 months of age.
- **Monash Advanced Preparation Program:** at least 16 years and 7 months of age.

Prior to enrolling in a Monash undergraduate course, you must be at least 17 years of age (and meet any specific age requirements for undergraduate courses that include clinical placements).

If you do not meet the minimum age requirement, you may be offered a deferred place until you become eligible.

2 ACADEMIC ENTRY REQUIREMENTS

You must meet the academic entry requirements for entry into a Monash pathway program. Pages 32–33 of this guide outlines the academic entry requirements for common qualifications that apply to international students only. Details on how to calculate your entry score for each qualification can be located on our website. Other qualifications may also be accepted and are assessed when you apply.

Foundation Year: go.monash.edu/foundation-year-entry

Monash Advanced Preparation Program: go.monash.edu/mapp-entry

Diploma: go.monash.edu/diplomas-entry

3 ENGLISH ENTRY REQUIREMENTS

You can meet the English entry requirements as follows:

COURSE	Monash English	Duolingo ¹	IELTS (ACADEMIC)					TOEFL (INTERNET-BASED) ³					PEARSON TEST OF ENGLISH (ACADEMIC)					Victorian Certificate of Education (VCE)
			Overall band score	Listening	Reading	Speaking	Writing	Total score	Listening	Reading	Speaking	Writing	Overall score	Listening	Reading	Speaking	Writing	
Foundation Year (Extended) ²	ME Module 1	80	5.0	4.5	4.5	4.5	4.5	2.5	1.5	2	2	2.5	36	30	30	30	30	21 in English or EAL
Foundation Year (Standard) ²	ME Module 2	95	5.5	5.0	5.0	5.0	5.0	3	2	2.5	2.5	3	42	36	36	36	36	23 in English or EAL
MAPP	ME Module 3	105	6.0	5.5	5.5	5.5	5.5	3.5	2.5	3	3	4	50	42	42	42	42	23 in English or EAL
Diploma part 1	ME Module 2	95	5.5	5.0	5.0	5.0	5.0	3	2	2.5	2.5	3	42	36	36	36	36	23 in English or EAL
Diploma part 2	ME Module 3	105	6.0	5.5	5.5	5.5	5.5	3.5	2.5	3	3	4	50	42	42	42	42	23 in English or EAL

English subjects completed in other qualifications – and study completed at tertiary level at an institution where English is the language of instruction, communication and assessment for all aspects of study for the whole of the educational institution – may also be accepted and are assessed when you apply.

The measure of English must be completed within three years prior to the Monash course commencement date (other guidelines may apply). If you have completed multiple English measures, the highest valid measure will be considered. Monash reserves the right to request an additional English test to confirm you meet the English entry requirements.

MONASH ENGLISH

If your English test does not meet the English entry requirements for direct entry into Monash pathway programs, or our undergraduate or graduate courses, you may want to consider **Monash English**. Upon successful completion of Monash English, you'll satisfy the English entry requirements for your preferred course if the course accepts this program. Duration is dependent on your English test and preferred pathway course, visit monashcollege.edu.au/study/courses/english.

4 PREREQUISITE SUBJECTS

In addition to meeting English entry requirements, some Monash pathway programs may require you to satisfy other prerequisite subjects. Full details for these can be found at monash.edu/study.

FOUNDATION YEAR CITIZENSHIP AND RESIDENCY REQUIREMENTS

If you hold Australian or New Zealand citizenship or Australian permanent residency, you're not eligible to apply for Foundation Year. For more information, visit monashcollege.edu.au/courses/fy/entry

Please note that all entry requirements are subject to change.

¹ Minimum subscores also apply, see our website for full details.

² Higher English language requirements apply for entry into Foundation Year packaged with Bachelor of Nursing, Bachelor of Nursing – Scholars Program and Bachelor of Nursing and Bachelor of Midwifery (Honours). See our website for full details.

³ Applicable to TOEFL (Internet Based) tests taken on 21 January 2026 onwards. For entry scores applicable to TOEFL (Internet Based) tests taken before 21 January 2026, please see our website.



MONASH PATHWAY PROGRAM ACADEMIC ENTRY REQUIREMENTS

Entry requirements into our pathway programs are subject to change. Please check our website for the latest information.

COURSE	COURSE CODE	DURATION (MONTHS) ¹	INTAKE ²	2026 FEES P.A. ³	PREREQUISITES
FOUNDATION YEAR					
Standard	3611	12	Feb, Aug	\$38,400	English (Australian Year 11 or equivalent)
Extended	3633	18		\$51,900	
MONASH ADVANCED PREPARATION PROGRAM (MAPP)					
MAPP	U0401	4	Feb, Sept	\$27,000	English (Australian Year 12 equivalent)
DIPLOMA OF ART AND DESIGN					
Part 1	2613	9	Feb, Jun, Oct ⁴	\$35,400	English (Australian Year 11 equivalent)
Part 2				\$38,800	English (Australian Year 12 equivalent)
DIPLOMA OF ARTS					
Part 1 (streams below)					
– Media communication	2618	9	Feb, Jun, Oct	\$35,900	English (Australian Year 11 equivalent)
– Sociology					English (Australian Year 11 equivalent) + Mathematics (Australian Year 12 equivalent) ⁵
– Psychology					
– Sociology Education	2645				English (Australian Year 11 equivalent) + Mathematics (Australian Year 11 equivalent)
– Psychology Education					
Part 2 (streams below)					
– Media communication	2618	9	Feb, Jun, Oct	\$40,000	English (Australian Year 12 equivalent)
– Sociology					English (Australian Year 12 equivalent) + Mathematics (Australian Year 12 equivalent) ⁵
– Psychology					
– Sociology Education	2645				English (Australian Year 12 equivalent) + Mathematics (Australian Year 11 equivalent)
– Psychology Education					
DIPLOMA OF BUSINESS					
Part 1	2607	9	Feb, Jun, Oct	\$41,700	English (Australian Year 11 equivalent)
Part 2 (streams below)					
– Business	2607	9	Feb, Jun, Oct	\$46,000	English (Australian Year 12 equivalent) + Mathematics (Australian Year 12 equivalent) ⁶
– Commerce	2608				English (Australian Year 12 equivalent) + Higher Level Mathematics (Australian Year 12 equivalent) ⁶
– Business Education	2647				English (Australian Year 12 equivalent) + Mathematics (Australian Year 12 equivalent)
DIPLOMA OF ENGINEERING					
Part 1	2612	9	Feb, Jun, Oct	\$39,100	English (Australian Year 11 equivalent)
Part 2		12		\$44,500	<ul style="list-style-type: none"> English (Australian Year 12 equivalent) + Mathematics (Australian Year 11 equivalent) + Chemistry or Physics (Australian Year 12 equivalent), OR English (Australian Year 12 equivalent) + Mathematics (Australian Year 12 equivalent) + Physics (Australian Year 12 equivalent), OR English (Australian Year 12 equivalent) + Mathematics (Australian Year 12 equivalent) + Chemistry (Australian Year 12 equivalent) + Physics (Australian Year 11 equivalent)⁷
DIPLOMA OF INFORMATION TECHNOLOGY					
Part 1	2638	9	Feb, Jun, Oct	\$38,500	English (Australian Year 11 equivalent)
Part 2				\$44,000	English (Australian Year 12 equivalent) + Mathematics (Australian Year 11 equivalent)
DIPLOMA OF SCIENCE					
Part 1	2637	9	Feb, Jun, Oct	\$37,800	English (Australian Year 11 equivalent)
Part 2 (streams below)					
– Science	2637	9	Feb, Jun, Oct	\$43,300	English (Australian Year 12 equivalent) + One from Science approved list ⁸ (Australian Year 12 equivalent) ^{7,9}
– Science Education	2646				<ul style="list-style-type: none"> English (Australian Year 12 equivalent) + Mathematics (Australian Year 11 equivalent)^{7,9} and one of Biology, Chemistry, Environmental Science, Geography, Physics or Psychology (Australian Year 12 equivalent), OR English (Australian Year 12 equivalent) + Higher Level Mathematics (Australian Year 12 equivalent)^{7,9}

1 Duration is based on a standard full-time load of 24 credit points per trimester.

2 Semester 1 commences in February and Semester 2 commences in August. Please note that diplomas operate on a Trimester basis. Trimester 1=February, Trimester 2=June, Trimester 3=October.

3 These are the confirmed 2026 tuition fees; indicative only for 2027. Fees are quoted in Australian dollars, and is the annual average fee per 48 credit points of study in this course. Fees are adjusted annually. For Foundation year fees, please see monashcollege.edu.au/courses/fy/dates-fees. For Diploma fees, please see monash.edu/study

4 The architectural design stream is only available in the following intakes: Part 1, June and October; Part 2, February and June.

5 The maths prerequisite applies to these streams only if you plan to enrol in the Bachelor of Politics, Philosophy and Economics or one of its associated double degrees.

6 A pass average in Mathematics (Australian Year 11 equivalent) is also accepted where you will be required to enrol in specific units during your diploma studies – see our website for full details.

7 You must also enrol in specific units during your diploma studies – see our website for full details.

2027 ATAR FOR INTERNATIONAL STUDENTS	GCE A LEVEL	ALL INDIA SENIOR SCHOOL CERTIFICATE EXAMINATION XII	INDIAN SCHOOL CERTIFICATE EXAMINATION XII	ADVANCED PLACEMENT, AMERICA	SAT, AMERICA (TOTAL SCORE OUT OF 1600)	HIGH SCHOOL DIPLOMA, VIETNAM	HONG KONG DIPLOMA OF SECONDARY EDUCATION AND (SENIOR SECONDARY 3)	INTERNATIONAL BACCALAUREATE (IB) DIPLOMA	ONTARIO SECONDARY SCHOOL DIPLOMA – GRADE 12	SMA3, INDONESIA – 10-POINT SCALE (6 PASS)	STPM, MALAYSIA	UEC, MALAYSIA	MONASH UNIVERSITY FOUNDATION YEAR (COMMENCING MUFY IN 2027)	UNSW FOUNDATION STUDIES	UNIVERSITY OF MELBOURNE, TRINITY COLLEGE FOUNDATION STUDIES
--------------------------------------	-------------	---	---	-----------------------------	--	------------------------------	---	--	---	---	----------------	---------------	---	-------------------------	---

INTERNATIONAL EQUIVALENCIES

Monash University Foundation Year (MUFY) prepares you for your first year of any Monash University undergraduate degree¹⁰. MUFY is offered at Standard and Extended levels with different durations, intake dates and entry requirements. To view MUFY entry requirements refer to go.monash.edu/mc-foundation-year

55	4	55%	47%	6	1060	6.4	11	22	65%	6	6	7.5	52.50%	5.25	52.50%
----	---	-----	-----	---	------	-----	----	----	-----	---	---	-----	--------	------	--------

Successful completion of a Diploma of Art and Design Part 1 will lead you to a Diploma of Art and Design Part 2. Diploma of Art and Design Part 2 prepares you for articulation into selected Art, Design and Architecture undergraduate destination degrees¹⁰. To view the Diploma of Art and Design entry requirements, refer to monash.edu/study

60	5	55%	50%	6	1090	6.5	12	24	70%	6	6.6	7.5	55%	5.5	55%
----	---	-----	-----	---	------	-----	----	----	-----	---	-----	-----	-----	-----	-----

Successful completion of a Diploma of Arts Part 1 will lead you to a Diploma of Arts – Sociology/Media Communication/Psychology streams Part 2. Diploma of Arts – Sociology/Media Communication/Psychology streams Part 2 prepares you for second-year entry into selected Arts undergraduate destination degrees¹⁰. To view the Diploma of Arts entry requirements, refer to monash.edu/study

60	5	55%	50%	6	1090	6.5	12	24	70%	6	6.6	7.5	55%	5.5	55%
60	5	55%	50%	6	1090	6.5	12	24	70%	6	6.6	7.5	55%	5.5	55%
65	6	66%	60%	6	1120	6.7	13	25	72%	6.8	7.3	7	60%	6	60%
60	5	55%	50%	6	1090	6.5	12	24	70%	6	6.6	7.5	55%	5.5	55%
65	6	66%	60%	6	1120	6.7	13	25	72%	6.8	7.3	7	60%	6	60%

Successful completion of a Diploma of Business Part 1 will lead you to a Diploma of Business – Business/Commerce streams Part 2. Diploma of Business – Business/Commerce streams Part 2 prepares you for second-year entry into selected Business and Economics undergraduate destination degrees¹⁰. To view the Diploma of Business entry requirements, refer to monash.edu/study

62	6	66%	60%	6	1120	6.7	13	25	72%	6.8	7.3	7	60%	6	60%
----	---	-----	-----	---	------	-----	----	----	-----	-----	-----	---	-----	---	-----

Successful completion of a Diploma of Engineering Part 1 will lead you to a Diploma of Engineering – Engineering stream Part 2. Diploma of Engineering – Engineering stream Part 2 prepares you for second-year entry into selected Engineering undergraduate destination degrees¹⁰. To view the Diploma of Engineering – Engineering stream entry requirements, refer to monash.edu/study

65	6	66%	60%	6	1120	6.7	13	25	72%	6.8	7.3	7	60%	6	60%
----	---	-----	-----	---	------	-----	----	----	-----	-----	-----	---	-----	---	-----

Successful completion of a Diploma of Information Technology Part 1 will lead you to a Diploma of Information Technology Part 2. Diploma of Information Technology Part 2 prepares you for second-year entry into selected Information Technology undergraduate destination degrees¹⁰. To view the Diploma of Information Technology entry requirements, refer to monash.edu/study

60	5	55%	50%	6	1090	6.5	12	24	70%	6	6.6	7.5	55%	5.5	55%
----	---	-----	-----	---	------	-----	----	----	-----	---	-----	-----	-----	-----	-----

Successful completion of a Diploma of Science Part 1 will lead you to a Diploma of Science Part 2. Diploma of Science Part 2 prepares you for second-year entry into selected Science undergraduate destination degrees¹⁰. To view the Diploma of Science entry requirements, refer to monash.edu/study

60	5	55%	50%	6	1090	6.5%	12	24	70%	6	6.6	7.5	55%	5.5	55%
----	---	-----	-----	---	------	------	----	----	-----	---	-----	-----	-----	-----	-----

8 Science approved list: VCE: Biology, Chemistry, Environmental Science, Geography, Mathematical Methods, Specialist Mathematics, Physics or Psychology. IB (SL or HL): Biology, Chemistry, Environmental Systems and Societies (SL only), Geography, Mathematics, General Mathematics (HL only), Mathematics: Analysis and Approaches, Mathematics: Applications and Interpretations (HL only), Physics or Psychology.

9 If you plan to enrol in the Bachelor of Science (or one of its associated double degrees) intending to major in mathematics, Higher Level Mathematics (Australian Year 12 equivalent) applies.

10 Entry requirements into Monash University apply. Please refer to monash.edu/study

MONASH UNIVERSITY UNDERGRADUATE ENTRY REQUIREMENTS FROM MONASH ADVANCED PREPARATION PROGRAM

For students commencing MAPP in 2027 and seeking entry to a Monash University undergraduate course in 2028.

COURSE/CODE	CAMPUS	SCORE (%)	ENGLISH (%)	PREREQUISITE SUBJECTS FOR FOUNDATION YEAR (FY)	
ART, DESIGN AND ARCHITECTURE					
Architectural Design F2001	Caulfield	70%	65%	None	
Design F2010		63.75%			
Fine Art F2003		Successful completion (no grade required)			
ARTS					
Arts A2000	Clayton	67.50%	65%	None	
	Caulfield				
Criminology A2008	Clayton	67.50%	65%	None ¹	
Global Studies A2001	Clayton	72.50%			
International Relations A2020	Clayton	67.50%			
Media Communication A2002	Caulfield	67.50%			
Music A2003	Clayton	63.75%			
Politics, Philosophy and Economics A2010	Clayton	72.50%			
BUSINESS AND ECONOMICS					
Note: Up to three bonus points (counting towards your final total MAPP score) can be awarded for this course to students who undertake unit sequences in MPP1020 Accounting for Business or MPP1030 Introductory Economics or MPP1050 Applied Mathematics and obtain a minimum grade threshold of 60% (other conditions apply). The bonus points will not be awarded on your final transcript issued by Monash University.					
Accounting B2029	Caulfield	70%	65%	Applied Mathematics (min 50%) or Introductory Mathematics for Business (min 50%)	
Actuarial Science B2033	Clayton	76.25%		Applied Mathematics (min 50%)	
Banking and Finance B2042	Caulfield	70%		Applied Mathematics (min 50%) or Introductory Mathematics for Business (min 50%)	
Business B2000	Caulfield	70%		Applied Mathematics (min 50%) or Introductory Mathematics for Business (min 50%)	
Business Administration B2007	Peninsula	60%		Accounting for Business (min 50%) or Applied Mathematics (min 50%) or Introductory Mathematics for Business (min 50%) ⁷	
Commerce B2001	Clayton	76.25%		Applied Mathematics (min 50%)	
Digital Business B2049	Caulfield	70%		Applied Mathematics (min 50%) or Introductory Mathematics for Business (min 50%)	
Economics B2031	Clayton	76.25%		Applied Mathematics (min 50%)	
Finance B2034		76.25%		Applied Mathematics (min 50%)	
Marketing B2036	Caulfield	70%		Applied Mathematics (min 50%) or Introductory Mathematics for Business (min 50%)	
EDUCATION					
Education (Honours) D3001	Clayton/ Peninsula	70%		65%	Accounting for Business (min 50%) or Applied Mathematics (min 50%) or Introductory Mathematics for Business (min 50%) ^{1, 2}
Learning Design and Technology D2003	Clayton	63.75%	None ³		
ENGINEERING					
Note: If you have successfully completed MPP1050 Applied Mathematics with a pass (50%) average or above you'll be awarded an additional five points to count towards the final total score. The additional points will not be awarded on the final transcript issued by Monash University.					
Engineering (Honours) ⁴ E3001	Clayton	76.25%	65%	Applied Mathematics (min 50%) and Chemistry Essentials (min 50%) or Physics Foundations ⁵ (min 50%) or Biology Foundations ⁵ (min 50%) ^{3, 6}	
INFORMATION TECHNOLOGY					
Computer Science C2001	Clayton	70%	65%	Applied Mathematics (min 50%)	
Information Technology C2000		70%		Accounting for Business (min 50%) or Applied Mathematics (min 50%) or Introductory Mathematics for Business (min 50%) ²	
LAWS					
Laws (Honours) L3001	Clayton	85%	75%	None	

COURSE/CODE	CAMPUS	SCORE (%)	ENGLISH (%)	PREREQUISITE SUBJECTS FOR FOUNDATION YEAR (FY)	
MEDICINE, NURSING AND HEALTH SCIENCES					
Biomedical Science M2003	Clayton	83.50%	65%	50% in Chemistry Essentials (min 50%), and one of Applied Mathematics (min 50%) or Introductory Mathematics for Business (min 50%) or Physics Foundations ⁵ (min 50%)	
Biomedical Science (Scholars Program) M2003		95%			
Health Sciences M2014	Caulfield	67.50%		None	
Nutrition Science M2001	Clayton	67.50%		None ³	
Nutrition Science (Scholars Program) M2001		85%			
Psychology M2018	Clayton	76.25%		None ³	
Public Health M2012	Caulfield	71%		None ³	
PHARMACY AND PHARMACEUTICAL SCIENCES					
Note: If you have successfully completed MPP1090 Biology Foundations ⁵ with a high credit (65%) average or above you'll be awarded an additional two points to count towards the final total score. The additional points will not be awarded on the final transcript issued by Monash University.					
Pharmaceutical Science P2001	Parkville	72.50%	65%	Applied Mathematics (min 50%) and Chemistry Essentials (min 50%) ⁴	
Pharmaceutical Science Advanced (Honours) P3002		75%			
Pharmaceutical Science Advanced (Honours) (Scholars Program) P3002		85%			
Pharmacy (Honours) P3001		75%			
Pharmacy (Honours) and Master of Pharmacy P6001		75%			
Pharmacy (Honours) (Scholars Program) and Master of Pharmacy P6001		85%			
SCIENCE					
Any science-based studies used to meet the prerequisite for admission must have been completed within five years of intended commencement.					
Science S2000	Clayton	72.50%	65%	Biology Foundations ⁵ (min 50%) or Chemistry Essentials (min 50%) or Applied Mathematics (min 50%) or Physics Foundations ⁵ (min 50%) or Psychology (min 50%)	
Applied Data Science S2010		72.50%			Applied Mathematics (min 50%)
Applied Data Science Advanced (Honours) S3003		80%			Applied Mathematics (min 50%)
Science Advanced – Global Challenges (Honours) ^{7,8} S3001		80%	75%	Biology Foundations ⁵ (min 50%) or Chemistry Essentials (min 50%) or Applied Mathematics (min 50%) or Physics Foundations ⁵ (min 50%) or Psychology (min 50%)	
Science Advanced – Research (Honours) S3002		85%			Applied Mathematics (min 50%) and two of Biology Foundations ⁵ (min 50%) or Chemistry Essentials (min 50%) or Physics Foundations ⁵ (min 50%) or Psychology (min 50%)

Please note:

- CRICOS codes for the above undergraduate degrees are located at monash.edu/study.
- The above entry requirement and destination degrees are subject to change.
- Entry requirements for double degree destination degrees are located at monash.edu/study.

1 This course has additional requirements, see monash.edu/study for full details.

2 Australian Year 11 or equivalent mathematics may also be considered. Minimum score requirement applies.

3 This course has special requirements, see handbook.monash.edu for full details.

4 You must complete 'BMS1021 Cells, tissues and organisms' as a compulsory elective unit in year 1, semester 1 of the Bachelor of Engineering (Honours) if you plan to specialise in Biomedical Engineering.

5 Biology Foundation and Physics Foundation will not be offered in 2026.

6 Prerequisites must be completed no more than five years prior to admission.

7 The entry requirements published in this guide are indicative only. Due to limited places, fulfilling the minimum MAPP entry requirements doesn't guarantee a place in this course.

8 All eligible applicants will be invited to an interview. For further information, please visit monash.edu/global-challenges. MAPP students cannot receive a packaged offer for this course.

MONASH UNIVERSITY UNDERGRADUATE ENTRY REQUIREMENTS FROM FOUNDATION YEAR

For students commencing Foundation Year in 2027 and seeking entry in Monash University undergraduate courses in 2028.

COURSE/CODE	CAMPUS	SCORE (%)	ENGLISH (%)	PREREQUISITE SUBJECTS FOR FOUNDATION YEAR (FY)
ART, DESIGN AND ARCHITECTURE				
Architectural Design F2001	Caulfield	70	65	None
Design F2010		65		None ⁴ MUFY students cannot receive a packaged offer for the Bachelor of Fine Art as students must prepare a folio independently for assessment. The MUFY program does not offer any subject that will assist students in the development and preparation of a folio.
Fine Art F2003		Successful completion (no grade required)		
ARTS				
Arts A2000	Clayton	65	65	None
	Caulfield	65		
Criminology A2008	Clayton	67.50		
Global Studies A2001	Clayton	72.50		
International Relations A2020	Clayton	67.50		None ⁴
Media Communication A2002	Caulfield	67.50		
Music A2003	Clayton	63.75		
Politics, Philosophy and Economics A2010	Clayton	72.50	Fundamental Mathematics (min 50%) ⁵ or Mathematics (min 50%) or Advanced Mathematics (min 50%)	
BUSINESS AND ECONOMICS				
Note: Up to four bonus points (counting towards your final total MUFY score) can be awarded for this course to students who undertake unit sequences in Accounting, Economics, Mathematics and/or Advanced Mathematics and obtain a minimum grade threshold of 60% (other conditions apply). The bonus points will not be awarded on your final transcript issued by Monash College.				
Accounting B2029	Caulfield	70	65	Fundamental Mathematics (min 50%) ⁵ or Mathematics (min 50%) or Advanced Mathematics (min 50%)
Actuarial Science B2033	Clayton	76.25		Mathematics (min 50%) or Advanced Mathematics (min 50%)
Banking and Finance B2042	Caulfield	70		Fundamental Mathematics (min 50%) ⁵ or Mathematics (min 50%) or Advanced Mathematics (min 50%)
Business B2000	Caulfield	70		Fundamental Mathematics (min 50%) ⁵ or Mathematics (min 50%) or Advanced Mathematics (min 50%)
Business Administration B2007	Peninsula	60		Fundamental Mathematics (min 50%) ⁵ or Mathematics (min 50%) or Advanced Mathematics (min 50%) ⁶
Commerce B2001	Clayton	76.25		Mathematics (min 50%) or Advanced Mathematics (min 50%)
Digital Business B2049	Caulfield	70		Fundamental Mathematics (min 50%) ⁵ or Mathematics (min 50%) or Advanced Mathematics (min 50%)
Economics B2031	Clayton	76.25		Mathematics (min 50%) or Advanced Mathematics (min 50%)
Finance B2034				Mathematics (min 50%) or Advanced Mathematics (min 50%)
Marketing B2036	Caulfield	70		Fundamental Mathematics (min 50%) ⁵ or Mathematics (min 50%) or Advanced Mathematics (min 50%)
EDUCATION				
Education (Honours) D3001	Clayton/ Peninsula ⁷	70	65	Fundamental Mathematics (min 50%) ⁵ or Mathematics (min 50%) or Advanced Mathematics (min 50%) ^{4,6}
Learning Design and Technology D2003	Clayton	63.75		None ⁸
ENGINEERING				
Note: If you have successfully completed Advanced Mathematics (unit 1 and 2) with a pass (50%) average or above you'll be awarded an additional five points to count towards the final total score. The additional points will not be awarded on the final transcript issued by Monash College.				
Engineering (Honours) ⁹ E3001	Clayton	76.25	65	Mathematics (min 50%) or Advanced Mathematics (min 50%) and Chemistry (min 50%) or Physics (min 50%) or Biology (min 50%) ^{8,10,11}
INFORMATION TECHNOLOGY				
Computer Science C2001	Clayton	70	65	Mathematics (min 50%) or Advanced Mathematics (min 50%). If you have successfully completed Advanced Mathematics (unit 1 and 2) with a pass (50%) average or above you'll be awarded an additional one point to count towards the final total score. The additional points will not be awarded on the final transcript issued by Monash College.
Information Technology C2000				Fundamental Mathematics (min 50%) ⁵ or Mathematics (min 50%) or Advanced Mathematics (min 50%) ⁶ If you have successfully completed Mathematics (units 1 and 2) and/or Advanced Mathematics (unit 1 and 2) with a pass (50%) average or above you'll be awarded an additional two points to count towards the final total score. The additional points will not be awarded on the final transcript issued by Monash College.
LAWS				
Laws (Honours) L3001	Clayton	85	75	None

1 The application of Fundamental Mathematics sequencing rule considers only seven units in total score calculation. Mathematics is excluded although a minimum score (>50%) is required.
2 To be eligible for bonus points you must complete your Foundation Year within the expected completion duration of two semesters (three for the Extended program).
3 Mathematics (MUF0091) and Fundamental Mathematics (MUF0142) are regarded as paired subject units under the Fundamental Mathematics sequencing rule.

4 This course has additional requirements, see monash.edu/study for full details.
5 Students can satisfy MUFY Fundamental Mathematics prerequisite required for this course by successfully completing either 'Mathematics (MUF0091) and Fundamental Mathematics (MUF0142)' OR 'Fundamental Mathematics (MUF0141) and Fundamental Mathematics (MUF0142)' and achieving the required overall score specified in each subject.
6 Australian Year 11 or equivalent mathematics may also be considered. Minimum score requirement applies.

7 Specialisations are offered at either Clayton or Peninsula. To view specialisations, visit monash.edu/study
8 This course has special requirements, see handbook.monash.edu for full details.
9 You must complete 'BMS1021 Cells, tissues and organisms' as a compulsory elective unit in year 1, semester 1 of the Bachelor of Engineering (Honours) if you plan to specialise in Biomedical Engineering.

HOW TO CALCULATE YOUR FOUNDATION YEAR SCORE

Step 1: Add the eight highest scores of your units passed¹

Step 2: Divide the total by eight¹

Step 3: If eligible add bonus points². Add 1.25% of the score of each additional unit you passed to Step 2 (maximum of two bonus point units).

Note: To complete Foundation Year, you must pass (>50%) a minimum of eight¹ units consisting of:

- Units 1 and 2 of English (compulsory subject); AND
- Units 1 and 2 of at least two other subjects²; AND
- Two additional units (stand alone units or paired subject units).

COURSE/CODE	CAMPUS	SCORE (%)	ENGLISH (%)	PREREQUISITE SUBJECTS FOR FOUNDATION YEAR (FY)
MEDICINE, NURSING AND HEALTH SCIENCES				
Biomedical Science M2003	Clayton	83.50	65	Chemistry (min 50%) and one of Fundamental Mathematics (min 50%) ⁵ or Mathematics (min 50%) or Advanced Mathematics (min 50%) or Physics (min 50%)
Biomedical Science (Scholars Program) M2003		95		
Health Sciences M2014	Caulfield	67.50	65	None
Medical Science and Doctor of Medicine ¹² M6011	Clayton	94	75	Chemistry (min 75%) ⁸
Nursing ^{12,13} M2006	Clayton	72.50	65 ¹⁴	Fundamental Mathematics (min 50%) ⁵ or Mathematics (min 50%) or Advanced Mathematics (min 50%) ^{4,6,8}
	Peninsula	67.50		
Nursing and Midwifery (Honours) ^{12,13} M3007	Peninsula	77.50	65 ¹⁴	Fundamental Mathematics (min 50%) ⁵ or Mathematics (min 50%) or Advanced Mathematics (min 50%) ^{4,6,8}
Nutrition Science M2001	Clayton	67.50	65	None ⁸
Nutrition Science (Scholars Program) M2001		85		
Occupational Therapy (Honours) ^{12,13} M3001	Peninsula	82.50	65	None ^{4,8}
Paramedicine ^{12,13} M2011	Peninsula	77.50	65	None ^{4,8}
Physiotherapy (Honours) ^{12,13} M3002	Peninsula	90	75	Any two of Chemistry (min 50%), Biology (min 50%), Physics (min 50%), Mathematics (min 50%) or Advanced Mathematics (min 50%) ^{4,8}
Psychology M2018	Clayton	76.25	65	None ⁸
Public Health M2012	Caulfield	71	65	None ⁸
Radiography and Medical Imaging (Honours) ^{12,13} M3006	Clayton	90	75	Mathematics (min 50%) or Advanced Mathematics (min 50%) and Physics (min 50%) or Biology (min 50%) ^{4,8}
Speech Pathology ¹³ M3008	Peninsula	82.50	75	One of Biology (min 50%), Chemistry (min 50%), Physics (min 50%), Mathematics (min 50%) or Advanced Mathematics (min 50%)
PHARMACY AND PHARMACEUTICAL SCIENCES				
Pharmaceutical Science P2001	Parkville	72.50	65	Chemistry (min 50%) and one of Mathematics (min 50%) or Advanced Mathematics (min 50%) ^{4,8,15}
Pharmaceutical Science Advanced (Honours) P3002		75		
Pharmaceutical Science Advanced (Honours) (Scholars Program) P3002		85		
Pharmacy (Honours) P3001		75		
Pharmacy (Honours) and Master of Pharmacy P6001		75		
Pharmacy (Honours) (Scholars Program) and Master of Pharmacy P6001		85		
SCIENCE				
Note: Any science-based studies used to meet the prerequisite for admission must have been completed within five years of intended commencement.				
Science S2000	Clayton	72.50	65	One of Biology (min 50%), Chemistry (min 50%), Physics (min 50%), Mathematics (min 50%) or Advanced Mathematics (min 50%) ¹
Applied Data Science S2010		72.50		Mathematics (min 50%) or Advanced Mathematics (min 50%)
Applied Data Science Advanced (Honours) S3003		80	Mathematics (min 50%) or Advanced Mathematics (min 50%)	
Science Advanced – Global Challenges (Honours) ¹² S3001		80	75	One of Biology (min 50%), Chemistry (min 50%), Physics (min 50%), Mathematics (min 50%) or Advanced Mathematics (min 50%) ¹⁶
Science Advanced – Research (Honours) S3002		85		Mathematics (min 50%) or Advanced Mathematics (min 50%) and two of Biology (min 50%), Chemistry (min 50%), or Physics (min 50%)

Please note:

- CRICOS codes for the above undergraduate degrees are located at monash.edu/study.
- The above entry requirement and destination degrees are subject to change.
- Entry requirements for double degree destination degrees are located at monash.edu/study.

10 If you have successfully completed Advanced Mathematics (unit 1 and 2) with a pass (50%) average or above, you'll be awarded an additional five points to count towards the final total score. The additional points will not be awarded on the final transcript issued by Monash College.

11 Prerequisites must be completed no more than five years prior to admission.

12 The entry requirements published in this guide are indicative only. Due to limited places, fulfilling the minimum MU FY entry requirements doesn't guarantee a place in this course.

13 Additional age requirements apply to undertake clinical placements for this course. Underage students who are unable to meet the mandatory compliance requirements, due to their age by the time of the first placement are not eligible for an offer. Please refer to the mandatory compliance web page for additional information: monash.edu/mnhs/compliance

14 Students are required to meet MU FY English score of 65% and provide an AHPRA approved English test (equivalent to an Academic IELTS overall score of 7.0 with no band less than 7.0) to meet the Monash University undergraduate courses English language requirement. The AHPRA approved English test must be valid two years prior to the Monash University course commencement date. Further information will be available at monash.edu/study

15 If you successfully complete Biology (unit 1 and 2) with a high credit (65%) average or above, you'll be awarded an additional two points to count towards your final total score. The additional points will not be awarded on the final transcript issued by Monash College.

16 All eligible applicants will be invited to an interview. For further information, please visit monash.edu/global-challenges. Foundation Year students cannot receive a packaged offer for this course.

MONASH UNIVERSITY UNDERGRADUATE ENTRY REQUIREMENTS FROM DIPLOMA PATHWAY

For students who commence their diploma studies between 2027 and are seeking admission into Monash University undergraduate courses in 2028.

How to calculate your Diploma score

To find out how to calculate your final diploma score, visit monash.edu/study/courses/destination-degrees

COURSE	COURSE CODE	CAMPUS	PREREQUISITES	DIPLOMA PART 2 SCORE (%)
ART, DESIGN AND ARCHITECTURE				
				Diploma of Art and Design
Architectural Design	F2001	Caulfield	None	50
Design	F2010			50
ARTS				
				Diploma of Arts (Sociology or Psychology streams)
Arts	A2000	Clayton/ Caulfield	None	55
Criminology	A2008	Clayton		55
Global Studies	A2001	Clayton		60
International Relations	A2020	Clayton		55
Media Communication	A2002	Caulfield		55
Music	A2003	Clayton		55'
Politics, Philosophy and Economics	A2010	Clayton	Mathematics (Australian Year 12 equivalent)	60
				Diploma of Arts (Media Communication stream)
Media Communication	A2002	Caulfield	None	55
BUSINESS AND ECONOMICS				
				Diploma of Business (Business stream)
Accounting	B2029	Caulfield	Mathematics (Australian Year 12 equivalent)	60
Banking and Finance	B2042	Caulfield		60
Business	B2000	Caulfield		60
Business Administration	B2007	Peninsula	Mathematics (Australian Year 11 equivalent)	50
Digital Business	B2049	Caulfield	Mathematics (Australian Year 12 equivalent)	60
Marketing	B2036	Caulfield		60
				Diploma of Business (Commerce stream)
Actuarial Science	B2033	Clayton	Higher level mathematics (Australian Year 12 equivalent)	70
Actuarial Science / Master of Actuarial Studies	B6060			70
Commerce	B2001			70
Economics	B2031			70
Finance	B2034			70

COURSE	COURSE CODE	CAMPUS	PREREQUISITES	DIPLOMA PART 2 SCORE (%)
EDUCATION DOUBLE DEGREES³				
				Diploma of Arts (Sociology Education & Psychology Education streams)
Education (Honours) / Arts	D3002	Clayton	Mathematics Australian Year 11 (or equivalent) ⁴	65 ¹
				Diploma of Business (Business Education stream)
Education (Honours) / Business	D3007	Clayton	Mathematics Australian Year 12 (or equivalent) ⁵	65 ¹
				Diploma of Science (Science Education stream)
Education (Honours) / Science ²	D3005	Clayton	Mathematics Australian Year 11 (or equivalent) + One from the Science approved list ⁶	65 ¹
ENGINEERING				
				Diploma of Engineering
Engineering (Honours)	E3001	Clayton	Higher level mathematics (Australian Year 12 equivalent) + Biology, Chemistry or Physics (all Australian Year 12 equivalent)	60 ¹
INFORMATION TECHNOLOGY				
				Diploma of Information Technology
Computer Science	C2001	Clayton	Higher level mathematics (Australian Year 12 equivalent)	60
Information Technology	C2000	Clayton	Mathematics (Australian Year 11 equivalent)	55
SCIENCE				
				Diploma of Science
Applied Data Science	S2010	Clayton	Higher level mathematics (Australian Year 12 equivalent) ⁷	60
Applied Data Science Advanced (Honours)	S3003		Higher level mathematics (Australian Year 12 equivalent) ⁷	70 ¹
Science ²	S2000		One from the Science approved list ⁶	55 ¹

Please note:

- CRICOS codes for the above undergraduate degrees are located at monash.edu/study.
- The above entry requirement and destination degrees are subject to change.
- Entry requirements for destination degrees are located at monash.edu/study/courses/destination-degrees.
- Entry requirements for double degree destination degrees are located at monash.edu/study/courses/destination-degrees.

1 This course has either additional requirements (see study.monash.edu for full details) OR special requirements (see handbook.monash.edu) for full details.

2 Students who wish to undertake the following majors during the Bachelor of Science must have Year 11 or 12 Mathematics, and enrol in both MCD4490 Advanced Mathematics and MCD4500 Engineering Mathematics: Applied Mathematics, Financial and Insurance Mathematics, Mathematics, Mathematical Statistics, Pure Mathematics. MCD4490 Advanced Mathematics is not required if students have completed VCE Specialist Mathematics (or equivalent).

3 Only available with the Primary and Secondary Education specialisation.

4 Students who enter into Diploma of Arts (Sociology Education) part 2 without Australian Year 11 Mathematics, must complete unit MCD1550 Introductory Mathematics for Business which will result in the Diploma duration being extended and additional costs.

5 Students who enter the Diploma of Business Education part 2 with Mathematics equivalent to Australian Year 11, must complete unit MCD2140 Business Mathematics which will result in the Diploma duration being extended and additional costs.

6 Science approved list: Biology, Chemistry, Environmental Science, Geography, higher level Mathematics, Physics or Psychology (all Australian Year 12 equivalent).

7 Packaged offers can not be issued for this course.

FEES, SCHOLARSHIPS AND HEALTH COVER

FEES

Your tuition fees are the main cost of your education. But depending on your chosen degree, additional costs may apply for class materials and other course requirements. Please make sure you check any additional costs for your course before commencing your studies. All costs are subject to inflation. For the most current fee information, please visit:

MAPP and Diploma fees: go.monash.edu/diploma-mapp-fees

Foundation Year fees: go.monash.edu/foundation-year-fees

OVERSEAS STUDENT HEALTH COVER

It's important to note that all student visa holders must have Overseas Student Health Cover (OSHC) before you arrive in Australia. OSHC provides medical and hospital in Australia, beginning on the day of your arrival to Australia. For further details, visit monash.edu/fees

The Department of Home Affairs has financial requirements you must meet in order to receive a student visa for Australia. For information, visit go.monash.edu/student-visa-eligibility

SCHOLARSHIPS

For more information on the scholarship options available to you and how to apply, visit monash.edu/scholarships

COST OF LIVING IN AUSTRALIA

Before you arrive in Melbourne and begin your studies at Monash College, it's a good idea to plan and prepare a budget. Monash College follows the Australian Government recommended guidelines¹ when it comes to the average living costs in Australia.

OTHER LIVING EXPENSES

There are additional living expenses beyond accommodation costs. You may also need spending money for things like medication and other personal items, such as clothes. You'll also need to budget for groceries, utilities, public transport or a car, and there's also entertainment to consider as well!

The website below provides a calculator where you can calculate your estimated costs to give you a sense of what your expenses may be.

For more information visit, go.monash.edu/living_education_costs



¹ For further details, visit www.studyaustralia.gov.au/en/life-in-australia/living-and-education-costs.

HOW TO APPLY

1

Choose your pathway

Choose your Monash University undergraduate degree, and decide which Monash Pathway program is best for you.

2

Check you meet the entry requirements

See pages 52–55 for a list of entry requirements.

3

There are two ways to apply

Apply online

To apply online, visit monash.edu/admissions/apply/online

OR

Apply through a registered agent. To find a registered Monash agent, visit monash.edu/agents

You'll also need to provide additional documents to support your application that may require certification and/or translation, visit go.monash.edu/certifying-documents.

4

Receive your offer

We determine whether you've met the entry requirements, and if successful you'll receive an offer known as an International Student Course Agreement (ISCA). The offer will detail your Monash pathway program and undergraduate degree. This means you'll only need to apply for one student visa.

Monash also checks whether you're a genuine student seeking entry to Australia to study, visit monash.edu/study/visa-requirements

5

Students under 18

If you're under 18, we'll send you a welfare and accommodation form with your offer letter. To complete the form, you'll need to decide:

1. Who will be your guardian?

You can choose either a parent/relative or a Monash College guardian. If you choose to live with a parent or relative, you'll need to download Form 157N from www.homeaffairs.gov.au and submit it to the Department of Home Affairs.

2. Where will you live?

- Off-campus student accommodation
- On-campus at Clayton
- Homestay

6

Accept your offer

Follow the instructions in your ISCA. You must complete, sign and return all pages in Part A of your ISCA, along with payment and provide a copy of the personal details page of your passport to Admissions *BEFORE* the offer lapse date.

When you accept your offer, you'll also need to pay your deposit and Overseas Student Health Cover fee (as outlined in your offer letter). If you're under 18, you'll also need to pay the deposits for Monash College guardianship and accommodation.

7

Receive your Confirmation of Enrolment (CoE)

Once your acceptance has been processed, you'll receive an electronic CoE. If you're under 18, we'll also send you a Confirmation of Appropriate Accommodation and Welfare (CAAW).

8

Apply for your student visa

You'll need the CoE to apply for your student visa with the Department of Home Affairs (DHA) for study in Australia¹.

When applying for your student visa, you'll need to meet all core visa criteria, such as the genuine student requirement, good character and health criteria. Financial capacity documentation may also be required. You'll also need to satisfy English requirements set by DHA where these requirements may differ from Monash.

If you're under 18 years of age when you start your course, you need to have your caregiver and accommodation arrangements approved and will also need Confirmation of Appropriate Accommodation and Welfare (CAAW) before applying for your student visa, visit monash.edu/students/under-18.

For more information visit:

monash.edu/study/visa-requirements

monash.edu/connect/student-visa.

You can also find out more about the Simplified Student Visa Framework at monash.edu.au/study/international/apply/visa

9

Pack your bags!

Congratulations, you're on your way to Monash College. To make sure you're prepared, we've created a checklist of things to do before you arrive. Don't forget to arrive in time for enrolment and orientation!

Visit monashcollege.edu.au/prepare-to-arrive



monash.edu/study

**FUTURE STUDENT ENQUIRIES
(INTERNATIONAL STUDENTS)**

Tel: +61 3 9903 4788
go.monash.edu/enquiries

ONLINE APPLICATION

monash.edu/admissions/apply/online

Monash University reserves the right to alter information, procedures, fees and regulations contained in this document should the need arise.

The information in this brochure was correct at the time of publication (May 2026). 26DES-6494.

CRICOS provider:
Monash University 00008C
Monash College 01857J

The Monash University Foundation Year is owned and delivered by Monash College Pty Ltd, CRICOS Provider Code 01857J.

Monash College Diplomas are awarded and delivered by Monash College (CRICOS Provider Code: 01857J).

