



# Your home away from home

Living in Melbourne is a big part of your student experience.

There are many accommodation options to choose from and it's important to choose the one that's right for you.

## IMPORTANT

Accommodation is in high demand. It is important that you start thinking about your accommodation options as soon as you have submitted your Monash application. If you're under 18, you will need to appoint an approved accommodation provider when submitting your application.

## LARGE STUDIO APARTMENT







## HOW TO CHOOSE THE RIGHT ACCOMMODATION

### What experience are you looking for?

The type of experience you want to have will be an important factor in your decision making. Consider what facilities are important to you. Would you like to live in an environment with other students, participate in social activities and share facilities like a kitchen? Or you might prefer to be independent and live on your own or with a friend? The choice is yours!

### Are you under 18?

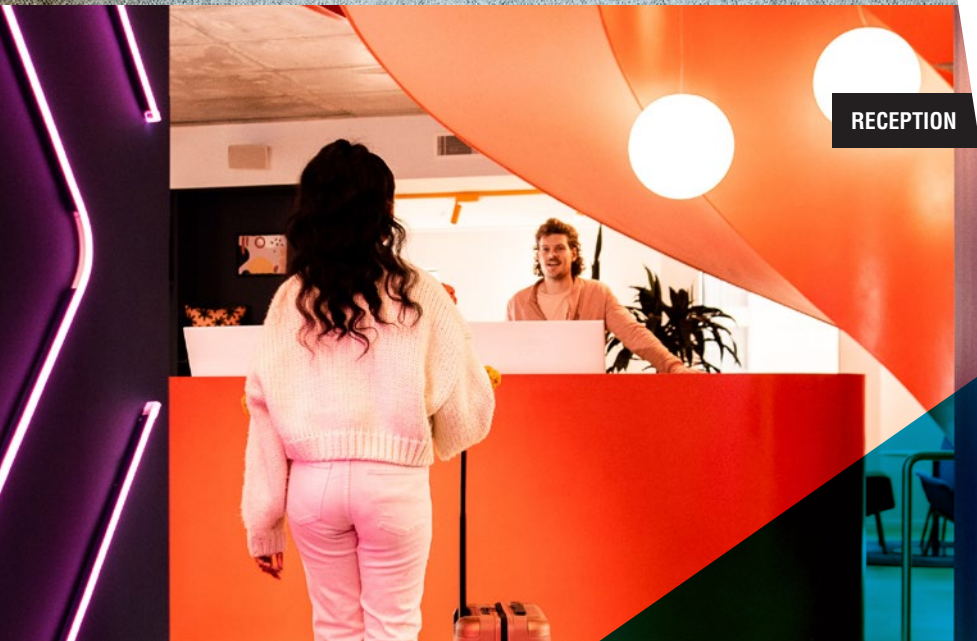
If you are under 18 years of age and are **not eligible to live with a parent or relative** when you first arrive, you will need to stay in an **'approved accommodation'** for underage students. Our **'approved accommodation'** providers are suited to younger students and offer more support and security. Living in a Homestay is a limited option and only via our approved provider. Homestay is subject to availability and approval so always remember to **email us** in advance of selecting this option.

After you have secured your accommodation, you must complete the **Under 18 welfare and accommodation form** and return it to **Monash admissions** without delay.



[monashcollege.edu.au/  
under-18](https://monashcollege.edu.au/under-18)





# Scape

✓ UNDER 18 APPROVED

Scape is a student accommodation provider with multiple properties, offering shared apartments or self-contained studio rooms that are perfect for students who would prefer to have their own space.

The buildings have been designed with many communal spaces to help you make friends and enjoy your time in Melbourne.

You can enjoy a superb lifestyle with modern rooms, study areas and social spaces as well as a great support network, which encourages you to meet people and make lifelong friends.

📍 Scape Swanston and Queensberry are conveniently located within a short walk from train and tram routes to reach our Docklands campus within 20 – 30 minutes.

🏠 Studio room, single room, shared room  
Gym & Laundry  
Unlimited high speed internet  
24/7 reception  
Rooftop terraces  
Communal lounge and kitchen  
Cinema room

🌐 [scape.com.au/melbourne](https://scape.com.au/melbourne)

📞 +61 3 9977 8088

📅 Book a room viewing tour:  
[scape.com/en-au/book-a-tour](https://scape.com/en-au/book-a-tour)

🏠 U18 approved



# Journal Student Living

✓ UNDER 18 APPROVED

Journal, Uni Place gives students a unique and authentic Melbourne living experience that's safe, supportive and social. Uni Place offers stylish studios and shared apartments, all with kitchens and private bathrooms. Students also enjoy multiple indoor and outdoor common spaces and participate in an outstanding community life program which is designed to introduce students to each other and help with their transition to Melbourne.

Booking can be made online with instant confirmation.



Single or shared room

24/7 reception

On-site café

Double-level study

Outdoor gardens

Rooftop terraces

Entertainment zone

Communal lounge & kitchen

Cinema

Gym and laundry

Unlimited high-speed internet



Uni Place is located on Leicester Street, Carlton, is near to train and tram routes and just a 20 – 30 minute travel journey to our Docklands campus



[journalstudentliving.com.au](http://journalstudentliving.com.au)



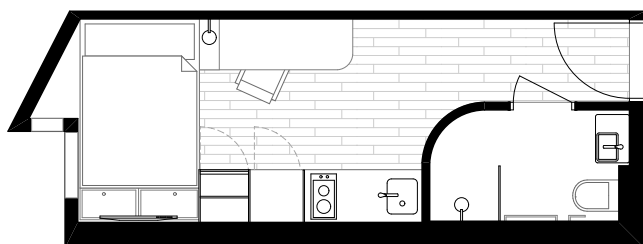
+61 3 9001 0694



Book a tour by using the calendar: [journalstudentliving.com.au/uni-place](http://journalstudentliving.com.au/uni-place)



U18 approved



**MEDIUM STUDIO**

**MEDIUM STUDIO**



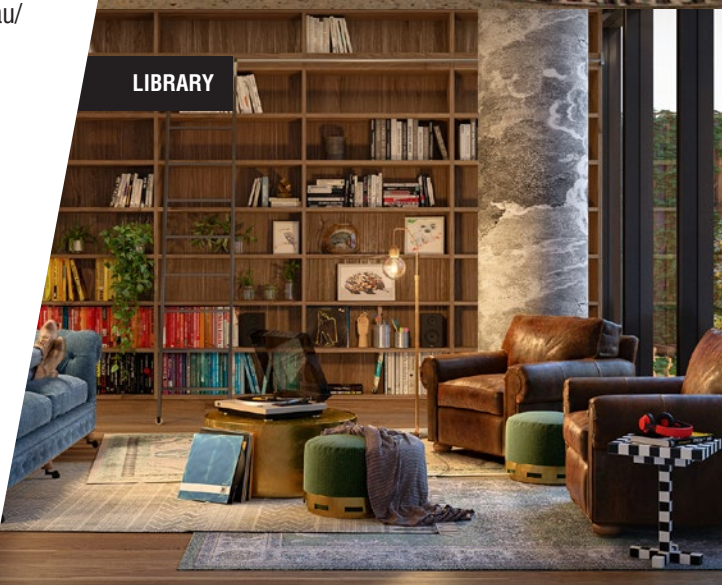
**DOUBLE LEVEL STUDY**



**ENTERTAINMENT ZONE**



**LIBRARY**







COURTYARD



STANDARD STUDIO



BREAKFAST AREA

Iglu

✓ UNDER 18  
APPROVED

Purpose-built for cool student living, Iglu offers support when you need it and independence when you want it. The combination of cool designer living spaces, first-class facilities and 24/7 onsite support, facilitates a safe and nurturing environment for students while they live away from their families. Live your best student life at Iglu.



Iglu Melbourne City is located within a short walk from train and bus routes to reach our Docklands campus within 15 – 20 minutes.



Complimentary weekday breakfast  
Unlimited high-speed internet  
Study areas, gym, courtyards, communal kitchen, lounge and BBQ area  
Cinema, table tennis & pool table  
High security access and 24/7 onsite support  
Onsite laundry



[iglu.com.au/properties/melbourne/melbourne-city/](http://iglu.com.au/properties/melbourne/melbourne-city/)



+61 3 9002 5600

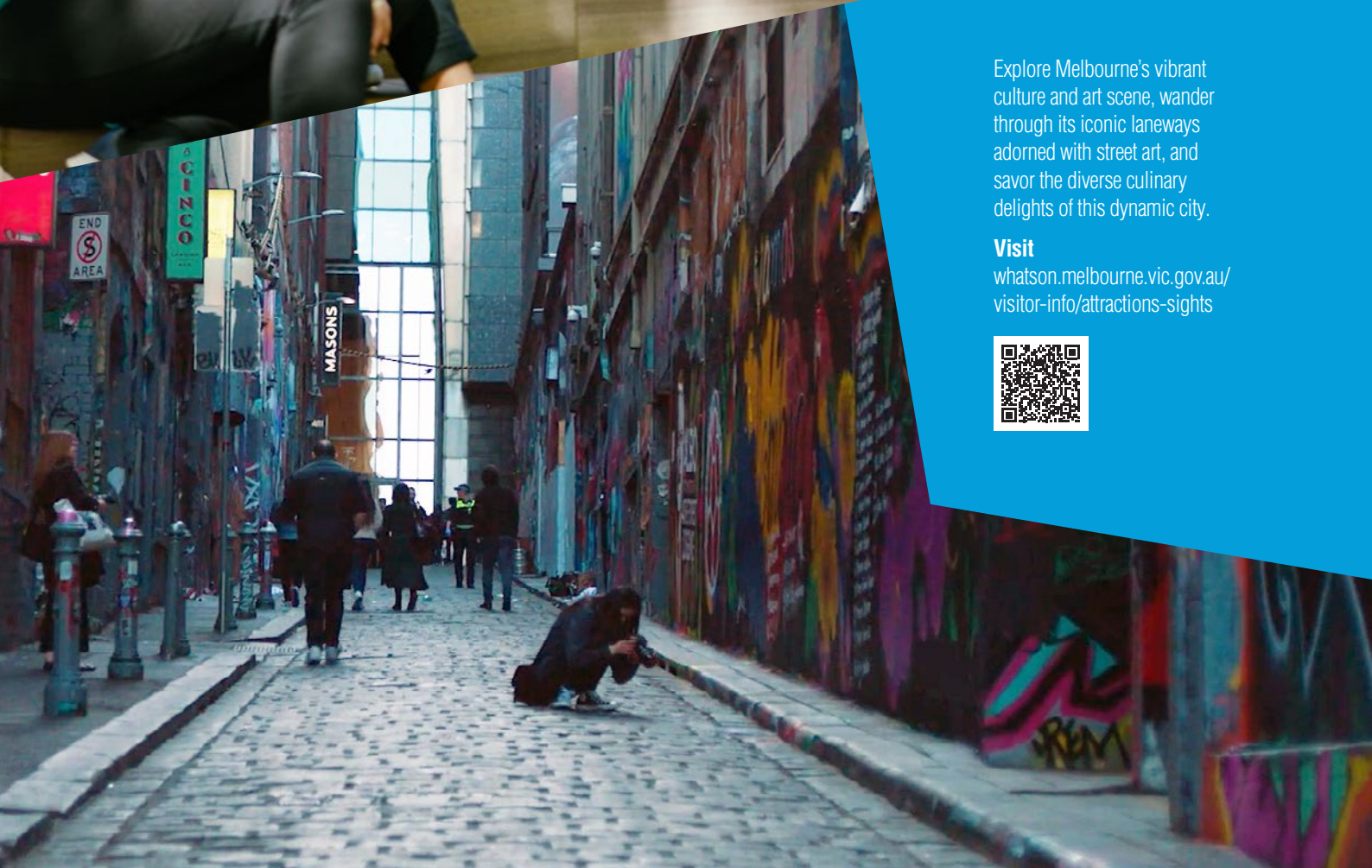


Book a room viewing tour:  
[iglu.com.au/tour-booking/](http://iglu.com.au/tour-booking/)



U18 approved





Explore Melbourne's vibrant culture and art scene, wander through its iconic laneways adorned with street art, and savor the diverse culinary delights of this dynamic city.

**Visit**

[whatson.melbourne.vic.gov.au/  
visitor-info/attractions-sights](https://whatson.melbourne.vic.gov.au/visitor-info/attractions-sights)







## Homestay

✓ UNDER 18  
APPROVED

Homestay via our 'approved' provider is a limited option for those who want to live in a family environment.

Travel time varies depending on the host location, but you can expect to travel up to 60 minutes or less via public transport to our Docklands campus.



[monashcollege.edu.au/life-at-monash-college/accommodation/approved-options-for-under-18s](https://monashcollege.edu.au/life-at-monash-college/accommodation/approved-options-for-under-18s)



Living in a **Homestay via our preferred provider** is an option for those who wish to live in a family environment. You will have your own furnished room and may participate in family activities and learn about local culture. Meal options vary according to your needs. Homestays are generally located in the surrounding suburbs of Melbourne. Travel time is typically up to 1 hour via public transport to our Docklands campus.

If you're under 18, Homestay is subject to availability and approval so always remember to **email us** in advance of selecting this option.



# Monash Residential Services (MRS)

**MRS** accommodation is suited to students that will transition to Monash University following a short study period at Monash College Docklands campus.

Note: Travel time from MU Clayton to Docklands via public transport is typically around 60 – 70 minutes each way.

A number of accommodation options are available via MRS.

## What is MRS?

MRS is a multicultural community which comprises domestic and international students from around the world. By living 'on campus,' you will be able to immerse yourself in all of the cultural and social experiences on offer while studying at Monash.

### LIVING ON CAMPUS AT MRS BENEFITS:

- Leadership opportunities
- Close proximity to classes
- Security and peace of mind
- Pastoral care and support




## Independent Living Renting

You can also rent a house, an apartment or a bedroom at a location of your choice if you enjoy independent living.

We recommend you inspect your accommodation in person before entering into a rental agreement or making any payments.

### Things to consider include:

- Proximity to public transport
- Safety of the area or the place
- Length of contract
- Is furniture provided or do you have to buy your own?
- How much rental bond\* do you have to pay?
- Number of roommates if it's a shared house

 [domain.com.au](http://domain.com.au) or [realestate.com.au](http://realestate.com.au)

 You can also visit real estate agents in person such as Ray White, Harcourt, Elite, and Barry Plant.

\*Bond is a security deposit paid at the start of the tenancy. It's common practice in Australia to request a bond from tenants for up to 4-weeks worth of rent. If the property manager/owner takes a bond, they must give the tenant a receipt and lodge it with the Residential Tenancy Authority within 10 days. The bond is paid back to the tenant when the property is vacated, provided no money is owed for rent, damages or other costs.

## Student.com

Student.com is a comparison website to book student accommodation.

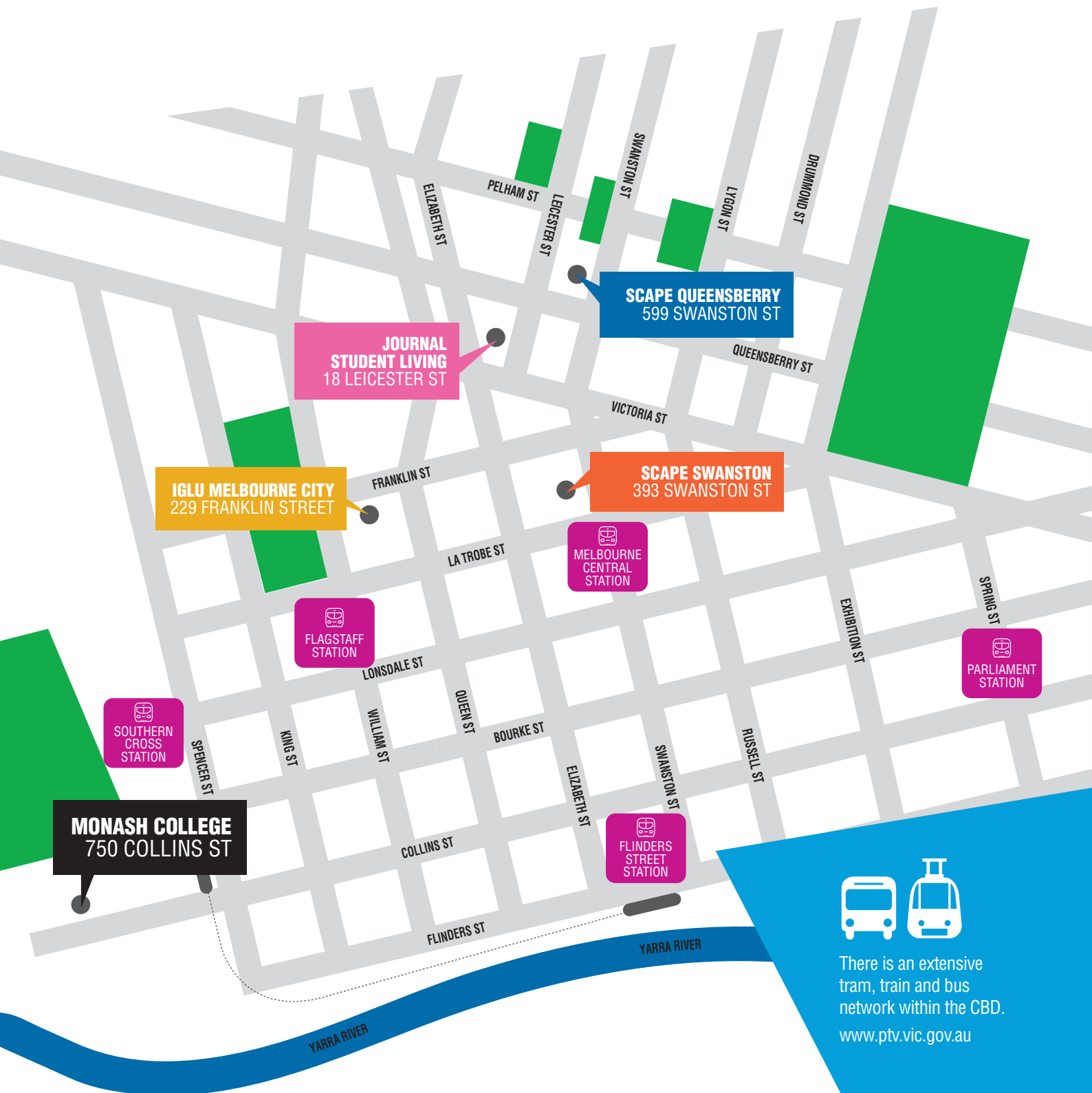
A free service for Monash College students, they list the widest and most carefully selected range of rooms. The website is available in 19 different languages and they have a dedicated team of multilingual booking consultants who can help you over the phone with your booking.

 [www.student.com/au/melbourne](http://www.student.com/au/melbourne)



# City Map

City locations for Monash College  
approved accommodation





# Accommodation

## OVERVIEW

We encourage you to always check the website or contact us at Monash College for the most up-to-date information regarding accommodation options. Information can change frequently, and it's important to confirm details before making any travel plans.

ACCOMMODATION	SINGLE ROOM	SHARED ROOM	FOOD INCLUDED	UTILITIES INCLUDED	COST PER WEEK (2023) from	U18	FEATURES
SCAPE QUEENSBERRY <a href="https://scape.com.au">scape.com.au</a>	•	•		•	\$349	•	Community environment Residential activities program Unlimited high-speed internet
SCAPE SWANSTON <a href="https://scape.com.au">scape.com.au</a>	•			•	\$349	•	Single apartment style accommodation Unlimited high-speed internet
JOURNAL STUDENT LIVING <a href="https://journalstudentliving.com.au/uni-place/">journalstudentliving.com.au/uni-place/</a>	•	•		•	\$359	•	Community environment Planned activities/events calendar Unlimited high-speed internet
IGLU MELBOURNE CITY <a href="https://iglu.com.au">iglu.com.au</a>	•	•		•	\$459	•	Complimentary weekday breakfast Community environment Unlimited high-speed internet
HOMESTAY <a href="mailto:accommodation@monashcollege.edu.au">accommodation@monashcollege.edu.au</a>	•		•	•	\$325	•	Live with a local family
STUDENT.COM <a href="https://student.com">student.com</a>	•	•		Varies	Varies		Student accommodation comparison website
RENTING AND HOUSE SHARING <a href="https://domain.com.au">domain.com.au</a> or <a href="https://realestate.com.au">realestate.com.au</a>	•	•		•	\$300-\$700 Approximately		For independent living
MONASH RESIDENTIAL SERVICES CLAYTON <a href="https://monash.edu/accommodation/accommodation/on-campus-options">monash.edu/accommodation/accommodation/on-campus-options</a>	•			•	\$280		Own bedroom with shared facilities or studio apartments with kitchenette and ensuite bathroom

## Questions about your accommodation options?

### EMAIL US AT

[accommodation@monashcollege.edu.au](mailto:accommodation@monashcollege.edu.au)

### VISIT

[monashcollege.edu.au/accommodation](https://monashcollege.edu.au/accommodation)  
[monash.edu/off-campus-accommodation](https://monash.edu/off-campus-accommodation)



We encourage you to always check the website or contact us at Monash College for the most up-to-date information regarding accommodation options. Information can change frequently, and it's important to confirm details before making any travel plans.



This information was correct at the time of publication (October 2023). 21-A77202.  
Monash College reserves the right to alter this information should the need arise.

CRICOS provider: Monash University 00008C, Monash College 01857J.

Monash University ABN 12 377 614 012

Monash College ABN 64 064 031 714

Monash College Pty Ltd ACN 064 031 714