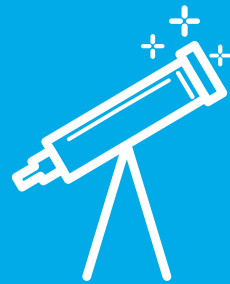
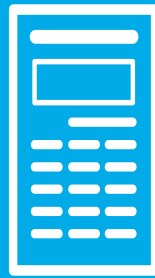
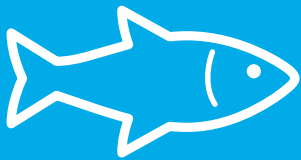




## Diploma of Science

Your pathway into a Bachelor of Science



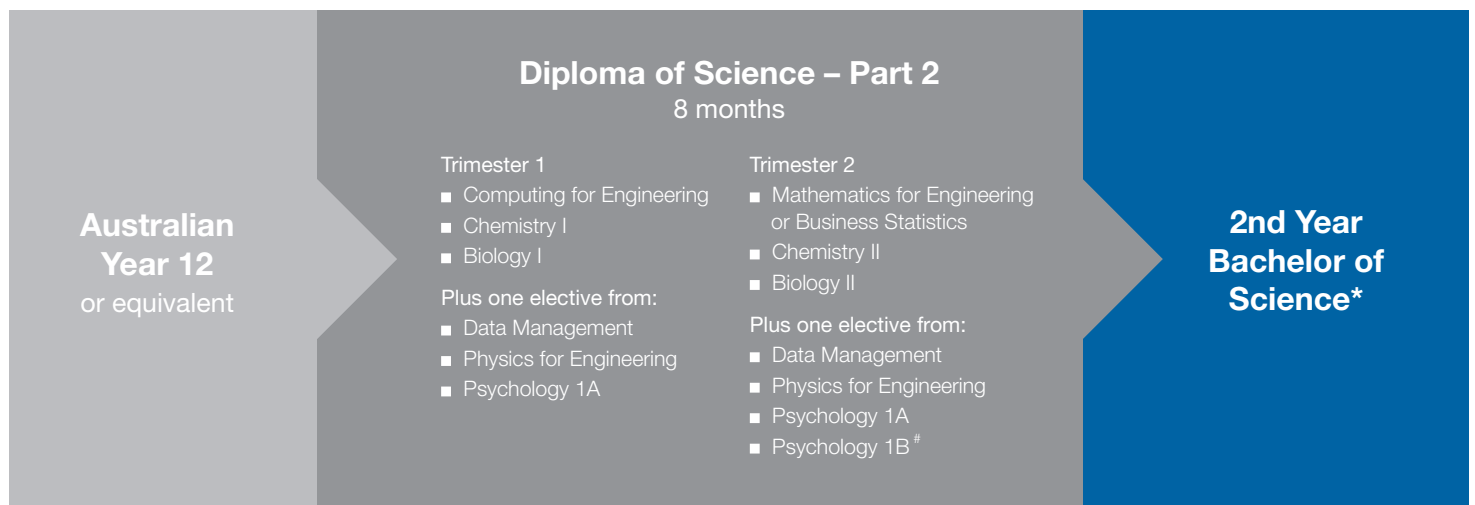


# Your path to a science degree at Monash starts with a diploma

## Diploma of Science

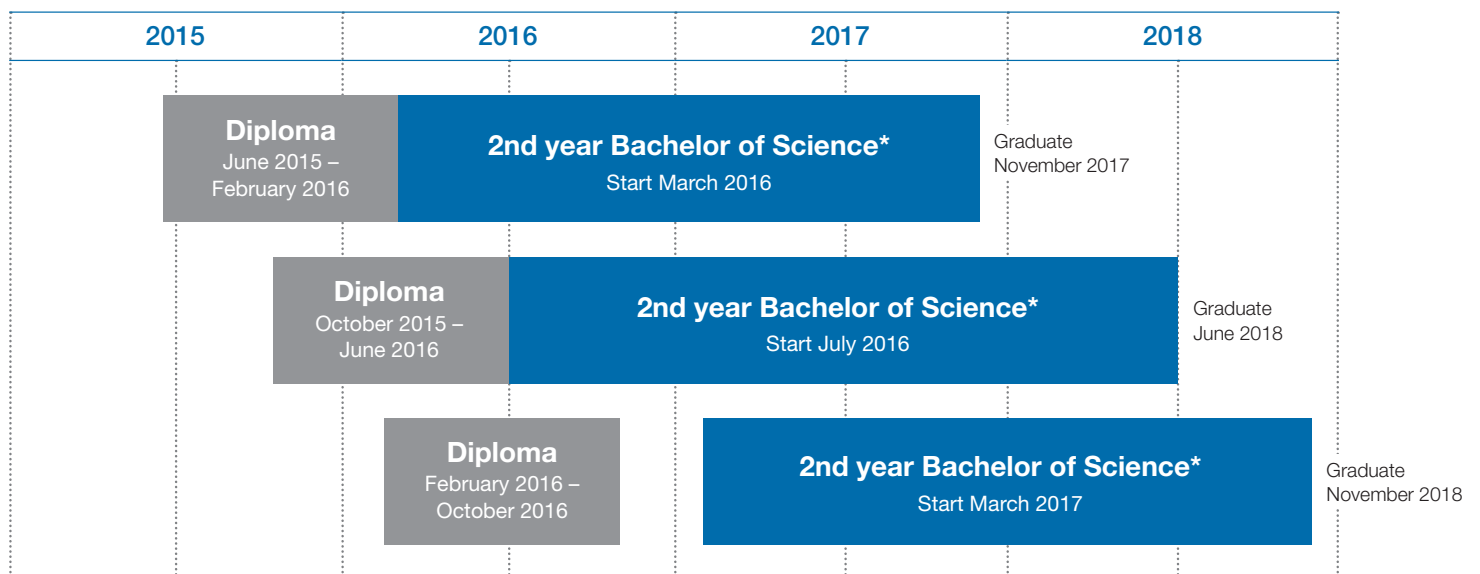
The Diploma of Science offers a direct pathway into second year of the Bachelor of Science at Monash University. During the eight month program you will complete the same units and assessments as first year Monash University students.

As a diploma student, you will benefit from extra Monash College support. Our small classes, academic skills workshops, mentor program and student experience team will help you transition into your tertiary studies. You will also have the opportunity to use the brand new science teaching facilities at the Monash University Clayton campus. This will help you prepare for what is expected in your science degree and help you become familiar with the University so you're ready to succeed.



## Fast track your studies

The Bachelor of Science offers one intake in Semester 1 of each year. By starting your Monash journey with a diploma you can choose an intake that suits you. Start your studies in February, June or October.



Based on normal course progression in the Diploma of Science Part 2.

\* Entry requirements for Monash College and Monash University apply.

<sup>#</sup> Prerequisite is Psychology 1A.

A change of visa status to become an Australian permanent resident during the Monash College Diploma program may invalidate the degree pathway guarantee.



# A science degree is your path to a career in science

**LOCATION**

Clayton

**DURATION**

3 Years

**STRUCTURE**

Comprehensive

**DEGREE AWARDED**

Bachelor of Science

## Bachelor of Science

If you want to make a difference, studying a science degree at Monash will give you the opportunity to learn from leading experts whose cutting-edge research is influencing the world's future.

The choice, flexibility and depth across the huge range of science disciplines available at Monash means that you will graduate with a degree unique to you, tailored to your individual expertise, interests and career aspirations.

For more information about science at Monash University visit [monash.edu/science](http://monash.edu/science)

## Where Monash science majors can take you



### Biological sciences

**Majors**

Ecology and conservation biology, Environmental science, Genetics, Plant sciences, Zoology

**Careers**

Agricultural Researcher  
Botanist/Plant Scientist  
Clinical Scientist  
Environmental/Conservation Biologist  
Laboratory Research Technician  
Medical Researcher  
Microbiologist  
Museum Curator  
Science Teacher  
Zoologist



### Mathematical and computational sciences

**Majors**

Applied mathematics, Computational science, Financial and insurance Mathematics, Mathematical statistics, Mathematics, Pure mathematics

**Careers**

Atmospheric Scientist  
Business Analyst  
Computer Software Developer  
Financial Consultant  
Mathematics Teacher  
Meteorologist  
Oceanographer  
Statistician



### Chemistry

**Major**

Chemistry

**Careers**

Drug Development Chemist  
Environmental/Water Chemist  
Food Technologist  
Forensic Scientist  
Hospital or Medical Laboratory Technician  
Industrial Chemist  
Instrument Specialist  
Molecular Design Chemist  
Occupational Health and Safety Officer  
Pharmaceutical and Product Manufacturer  
Toxicologist  
Water Quality and Management Consultant



### Earth and environmental sciences

**Majors**

Atmospheric science, Environmental science, Geographical science, Geosciences

**Careers**

Ecotourism Operator  
Environmental Scientist  
Geologist (Mineral/Petroleum Exploration)  
Landcare Project Manager  
Marine Biologist  
Museum Scientist  
Natural Resource Manager  
Palaeontologist  
Geologist



### Biomedical and life sciences

**Majors**

Biochemistry, Developmental biology, Human pathology, Immunology, Microbiology, Pharmacology, Physiology, Psychology

**Careers**

Biochemist  
Clinical Psychologist\*  
Dietician/Nutritionist  
Embryologist (IVF)  
Forensic Scientist or Psychologist  
Medical Researcher  
Microbiologist  
Neuroscientist  
Pharmaceutical and Product Manufacturer  
Pharmacologist



### Physics and astronomy

**Majors**

Astrophysics, Materials science, Physics

**Careers**

Physicist  
Astronomer and Astrophysicist  
Materials Scientist  
Physics Teacher  
Synchrotron Scientist  
Telecommunications Specialist  
University Lecturer

\* Requires an accredited professional qualification

## Diploma of Science entry requirements

Country	Qualification	Minimum academic score	Minimum English score	Prerequisites
China	Gao San – Senior Middle Year 3	75%		
Hong Kong	HKDSE – Senior Secondary 3	13		
Indonesia	SMA3	6.0	IELTS: 6.0, writing 6.0	
Global	International Baccalaureate Diploma	24	TOEFL paper based: 523, TWE 4.5	Chemistry and Mathematics (Australian Year 11 equivalent)
Malaysia	UEC	7.5	TOEFL Internet based: 69, writing 21+	
	STPM	6.6		
Singapore	GCE A levels	5		
India	All India Senior School Certificate Examination XII	55%	Monash English Bridging: Successful completion of 10 or 15 week program	
Thailand	Matayom 6	2.2		
Vietnam	Year 12 – Bang tot Nghiap Pho Thong Trung Hoc or Bang Tu Tai	6.5		

If you do not meet the minimum academic entry requirements, you may be eligible for the Diploma of Science Part 1. See [monashcollege.edu.au/diploma](http://monashcollege.edu.au/diploma) for more information.

If you need help meeting the English language requirement, you may be offered a conditional offer, packaged with one of our English language programs.

For a full list of entry requirements and calculations by country visit [monashcollege.edu.au/diploma](http://monashcollege.edu.au/diploma)

## Contact us

### Central Admissions

Email: [study@monash.edu](mailto:study@monash.edu)

Phone: +61 3 9903 4788 (outside Australia)

[monashcollege.edu.au/diploma](http://monashcollege.edu.au/diploma)



Applications now open  
for June and October.